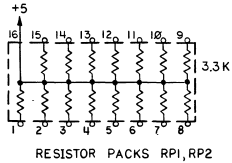
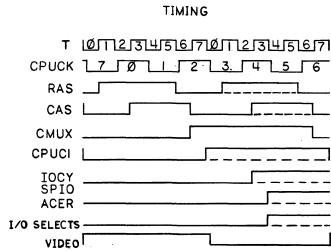
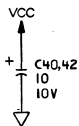
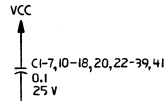
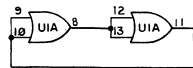


NOTE: UNLESS OTHERWISE SPECIFIED

1. ALL RESISTORS VALUE ARE IN OHMS
1/4 WATT ±5%.
2. ALL CAPACITORS ARE IN MICROFARADS.



SPARE GATES



REFERENCE DESIGNATIONS		
DEVICE	LAST USED	NOT USED
CR	CR1	
Q	Q2	
R	R19	
C	CH2	
RP	RP2	
SW		
L	L1	
Y	Y1	
DS	DS1	

J1		J1	
5-1A	SI0	5-1A	SH0
5-1A	SI1	5-1B	SH1
5-1B	SI2	5-1B	SH2
3-4C	INT0	3-2D	TAK0
3-4C	INT1	3-2D	TAK1
3-4C	INT2	3-2D	TAK2
3-4C	RSIR	3-4C	KBR
3-4C	IOIR	3-2C	E
3-1B,3-4C	DGND	3-2C	DGND
	+5		+5
3-2D	RESET	2-3C	CPUCK
3-2D	LDMA	3-4D,4-2B,5-2B	BGACK
3-4C	BR	3-3C	BG
3-4A	BD0	3-4A	BD1
3-4A	BD2	3-4A	BD3
3-4A	BD4	3-4A	BD5
3-4A	BD6	3-4A	BD7
3-4B	BD8	3-4B	BD9
3-4B	BD10	3-4B	BD11
3-4B	BD12	3-4B	BD13
3-4B	BD14	3-4B	BD15
	DGND		DGND
	+5		+5
5-2D,4-2D,3-2C	A1	3-1C,4-2D,5-2D	A2
5-2D,4-2D,3-2C	A3	3-1C,4-2D,5-4D	A4
4-2D,3-1C	A5	3-1C,4-2D	A6
4-2D,3-2D	A7	3-1C,4-2D	A8
3-2D	A9	3-1C	A10
5-2B,3-1C	A11	3-1C,5-2B	A12
3-2C	VMA	3-4C,3-2D	VFA
	+12		+12
3-2C,3-4C	AS	5-1C	BTACK
3-2C	LDS	3-4B,3-2C,4-4D,4-4B,5-4D	READ
5-2D,3-2B	CSYNC	3-2C	UDS
5-2A	VA10B	5-1B	INTIO
2-4A	R1	5-2A	VA9B
5-4A,3-4A	MD0	2-4A	R2
5-4A,3-4A	MD2	3-4A,5-4A	MD1
5-4A,3-4A	MD4	3-4A,5-4A	MD3
5-4A,3-4A	MD6	3-4A,5-4A	MD5
5-4A,3-4A	MD8	3-4A,5-4A	MD7
5-4A,3-4B	MD10	3-4A,5-4A	MD9
5-4A,3-4B	MD12	3-4A,5-4A	MD11
5-4A,3-4B	MD14	3-4A,5-4A	MD13
5-4A,3-4B	MD14	3-4A,5-4A	MD15
	DGND	3-4A,5-4A	MD14
	+5		DGND
4-1B	RA1		RA2
4-1B	RA3	4-1B	RA4
4-1B	RA5	4-1B	RA6
4-1B	RA7	4-1B	RA8
3-4C	RSTSW	4-1B	RA9
3-4C	A17	3-1D	A16
3-1D	A19	3-1D	A18
3-1D	MREAD	4-4B,5-4D	CAS
5-1D	RAS	2-1C	A20
2-1D	HSYNC	3-1C	A29
5-2C	VSYNC	3-2C,5-1D	SFER
5-2D	VSYNC	3-2C,5-1D	NMT
5-2C,3-2B	DGND	3-1C	DGND
	+5		+5

DEVICE	NAME	+5V	GND	PG#
74LS00	U7C,6D,15F	14	7	3,4,5
74LS04	UIB			2,5
74LS08	U4A			5
74LS11	UI0C			3
7417	U2E			3,5
74LS32	UIA			2,4
74ALS32	U2D			2,4
74LS38	U7A			5
74S66	U4D	14	7	2,5
74S109	U3A,2B,3B,4B,3C,5D,3E	16	8	2,4,5
74S132	UIE	14	7	2,5
74S138	UID	16	8	2
74LS138	UI3F			5
74LS139	UI4F			5
74LS148	UI2F			3
74LS153	U6E,7E,8E,5F			4
74LS156	U4F			3
74LS166	U7F,8F			5
74S169	UIC	16	8	2
74LS244	U8C,15C,9E	20	10	3
74LS245	UI1A,11B,14E,15E,9F,11F	20	10	3,4
74LS259	U4E	16	8	5
74LS260	U2C, U3D	14	7	2
74LS279	U5C	16	8	3
74F283	U8B,9B,10B	16	8	4
74LS373	U9D	20	10	4
74LS374	U6B,11C,7D,11D,11E,13E	20	10	3,4
74LS393	U7B,5E,6F	14	7	5
74ALS1002	U6A, U5B	14	7	2,5
68000	UI3A	14	9	16,53
ROM SERIAL	U6C	20	10	5
74F10	U5A	14	7	2,3
74LS171	ROM1,STATIC	18	9	4
ROM, HI	UI3D	28	14	3
ROM, LO	UI4D	28	14	3
556	UI5B	14	7	3

REV	ZONE	ECO #	REVISION	DATE	APPRO
A		B097	INITIAL RELEASE		
B		B120	SHEET 1-ADDED CH04 CH2; SHEET 1-5 MISC. CORRECTION TO SHEET TO SHEET DESIGNATORS & SIGNAL NAMES.	7/80	APL
C	4D	B136	SHEET 4-2-4C WAS J1-106, 2-3C WAS 2-2D, PCK WAS T5, T4 WAS T3, PIN 15(USD) WAS PIN 11, ADDED PIN 5 TO USD, ADDED PIN 11 TO USD.	7/80	APL
D	2B	B142	SHEET 2- SWITCHED PIN NUMBERS 2 & 3 AND THEIR TRACES ON U2B. SHEET 3- 341-0175 WAS 374-0070, 341-0176 WAS 341-0071.	1/80	APL
E		B160	SHEET 2- U2B PIN 3 WAS CONNECTED TO U4B PIN 10, 15 NOW U1B PIN 8; REFERENCE REMOVED FROM U1B PIN 2 SHEETS 4 & 5- MADE MINOR CLARIFICATION CORRECTIONS	1/80	APL
F	4D	B181	5H3-CB WAS 1.0	7/80	APL
H	3A	B202	SH1-R19 WAS R17, ADDED DS1 SH2-ADDED R18 SH3-ADDED R19 SH4-U1C PIN 3 WAS CONNECTED TO GND, ADDED DS1	7/80	APL

METRIC
apple computer inc.

NOTICE OF PROPRIETARY PROPERTY
THE INFORMATION CONTAINED HEREIN IS THE PROPRIETARY PROPERTY OF APPLE COMPUTER, INC. THE PROPRIETOR HEREBY DISCLAIMS ANY LIABILITY FOR DAMAGES OR INJURY TO THE EXTENT PERMITTED BY LAW.

DATE: 7/80
REV: 1/80
BY: G. MARTEN
APP: POS.

SHEMATIC, CPU, LISA

DATE: 7/80
REV: 1/80
BY: G. MARTEN
APP: POS.

050-4009-H 1/5

91H600H-050