



Spelling Checker

Pinpoint™



# **Spelling Checker**

## **User Guide and Installation Notes**



**Pinpoint Publishing  
Emeryville, California**

## Limitation on Warranties and Liability

Even though Pinpoint has tested the software described in this user guide and reviewed its contents, neither Pinpoint Publishing, Virtual Combinatrics, Software Heaven Inc., nor its software suppliers make any warranty or representation, either express or implied, with respect to this user guide or to the software described in it, their quality, performance, merchantability, or fitness for any particular purpose. As a result, this software and user guide is sold "as is." The purchaser assumes the entire risk as to their quality and performance. In no event will Pinpoint, Virtual Combinatrics, Software Heaven Inc., or its software suppliers be liable for direct, indirect, special, incidental, or consequential damages resulting from any defect in the software or user guide, even if they have been advised of the possibility of such damages. In particular, they shall have no liability for any programs or data stored in or used with Pinpoint products, including the costs of recovering these programs or data. Some states do not allow the exclusion or limitation of implied warranties or liability for incidental or consequential damages, so the above limitation or exclusion may not apply to you. If you think you bought a defective copy of Pinpoint Software, send the disk back to us and we'll send you a new disk, free. Apple Computer, Inc. makes no warranties, either express or implied, regarding the enclosed software package, its merchantability or fitness for any particular purpose. The exclusion of implied warranties is not permitted by some states. The above exclusion may not apply to you. This warranty provides you with specific legal rights. There may be other rights that you have which vary from state to state.

## Copyright Notice

This user guide is copyrighted by Pinpoint and Virtual Combinatrics, Inc. with all rights reserved. The software described in it are copyrighted by SoftWare Heaven, Inc. with all rights reserved. Under the copyright laws, this user guide or the programs may not be copied, in whole or part, without the written consent of SoftWare Heaven Inc. and Pinpoint Publishing and/or Virtual Combinatrics except in the normal use of software to make backup copies. This exception does not allow copies to be made for others, whether or not sold. Under the law, copying includes translating into another language or format. You may use the software on any computer owned by you but extra copies cannot be made for this purpose. For some products, a multi-use license may be purchased to allow the software to be used on more than one computer owned by the purchaser, including a shared disk system. Contact Pinpoint for more information.

ProDOS and is a copyrighted program of Apple Computer, Inc., licensed to Pinpoint Publishing and Virtual Combinatrics, Inc. to distribute for use only in combination with Spelling Checker. ProDOS shall not be copied onto another diskette (except for archival purposes) or into memory unless as part of execution of Spelling Checker. When Spelling Checker has completed execution, ProDOS shall not be used by any other program.

Copyright (c) 1986-87 Pinpoint Publishing, Software Heaven, Inc. All rights reserved  
Published by and licensed exclusively to:  
Virtual Combinatrics, Inc., dba Pinpoint Publishing  
5865 Doyle Street, Emeryville, CA 94608, (415) 654-3050  
Telex 245-8579 CompuServe 76244,123 Delphi, MCI, GEnie: PINPOINT

## Notice

Pinpoint, Virtual Combinatrics, Inc. and Software Heaven, Inc. reserve the right to make improvements to this user guide and software described in it at any time without notice. Pinpoint, Virtual Combinatrics, Inc and Software Heaven, Inc. cannot guarantee that you will receive notice of a revision to the software described in this user guide, even if you have received the product and returned a registration card received with the product. You should periodically check with your authorized Pinpoint dealer.

## First Edition

Software Authors: Pinpoint Publishing and Software Heaven, Inc.  
User Guide Author: Eric Delore

## Trademark Acknowledgement

Pinpoint, Pinpoint Spelling Checker, The RAM Enhancement Kit, and The RAM Switcher are trademarks of Pinpoint Publishing and Virtual Combinatrics, Inc. Apple, Apple IIc, UniDisk 3.5, and AppleWorks are trade marks of Apple Computer Inc. All other references are trademarks of their respective owners.



# Table of Contents

List of Figures	List of Figures	iii
Preface	Helpful Things You Should Know	iv
Chapter 1	The Pinpoint Spelling Checker	1.1
Introducing Spelling Checker	Fitting Words	1.1
	Here's What You Need to Run Spelling Checker	1.3
	Here's How You Want to Run Spelling Checker	1.3
	Overview of What We'll Do in Chapters 2 and 3	1.4
Chapter 2	Getting Spelling Checker Ready	2.1
Getting Spelling Checker Ready	Getting Spelling Checker Ready	2.2
	Step A: Creating Working Copies of Spelling Checker	2.2
	Step B: High Capacity Disk Set Up	2.3
	Step C: Installing Spelling Checker	2.3
	Step D: Installing Pinpoint on AppleWorks	2.10
	Step E: Extended RAM Set Up	2.11
Chapter 3	Using the Spelling Checker	3.1
Using The Spelling Checker	Using Spelling Checker with AppleWorks	3.1
	Changing Spell-Checking Modes	3.3
	Changing Spelling Checker Options	3.4
	Spell-Checking a Word	3.5
	Choosing a Suggested Spelling	3.7
	Editing the Word	3.7
	Adding Words to the Dictionary	3.7
	Continuing Onward	3.7
	Consistently Misspelled Words	3.7
	Spell-Checking a Spreadsheet Cell	3.7
	Spell-Checking a Database Field	3.8
	Spell-Checking a Paragraph	3.9
	Spell-Checking a Document	3.9
Appendices	Appendix A — Error Messages	A.1
	Appendix B — ProDOS Pathnames	B.1
	Appendix C — Removing Words from the Dictionary	C.1
	Appendix D — Memory Usage and Compatibility	D.1
	Appendix E — Other Pinpoint Products	E.1
Index	The Index	

# List of Figures

<b>Figure 2.1</b>	Spelling Checker Installation Menu	2.4
<b>Figure 2.2</b>	Word Processor Type Screen	2.5
<b>Figure 2.3</b>	Set Default Options Screen	2.6
<b>Figure 3.1</b>	Pinpoint Desktop Accessory Screen	3.2
<b>Figure 3.2</b>	Spelling Checker Mode Menu	3.3
<b>Figure 3.3</b>	Options Menu	3.4
<b>Figure 3.4</b>	Pinpoint Spelling Checker Menu	3.6
<b>Figure 3.5</b>	Spell-Checking a Spreadsheet Cell	3.8
<b>Figure 3.6</b>	Spell-Checking a Database Field	3.9

# Preface

**Welcome!**

**Spelling Checker** is an optional accessory for Pinpoint Desktop Accessory owners. It helps you create letter perfect documents, spreadsheets, and databases. Like all Pinpoint products, **Spelling Checker** is designed to help you get more out of your computer. Your package includes this user guide and a "floppy" disk containing the **Spelling Checker** on one side and the dictionaries on the flip side.

Isn't it nice to receive non-copy protected software? All Pinpoint software, including **Spelling Checker**, is non-copy protected because we want it to be convenient to use, and because we trust you. Please remember that giving a copy of our software to a friend is a violation of copyright laws. Illegal copying of our software also makes it harder for us to make a living selling the software you'll be using and depending on every time you use your computer.

We value your assessment of our software and we want to include your ideas in our new products plans, so let's hear from you.

**General Offices:**

**(415) 654-3050**

**Mailing Address**

**Pinpoint Publishing, 5865 Doyle Street, Emeryville, CA 94608  
Attention: Product Development**

**If you would like to order another Pinpoint product, we have toll free sales lines. Just check the last appendix in this manual for a list of Pinpoint products and call:**

**24 Hour TOLL FREE  
Order Desk**

**United States (800) 633-2252 / Ext. 635 (order only)**

**Technical Support  
Information**

**If you need technical assistance, you can reach the Technical Support team at (415) 654-0286. See the Technical Support brochure included in your package for more information.**



# Chapter 1

## Introducing Spelling Checker

*Hello, and Thank You!* You have purchased Spelling Checker, one of the many tools from Pinpoint Publishing designed to help you get the most out of your Apple computer. This chapter will:

- ▲ Tell you a little about why you need a pop-up Spelling Checker
- ▲ Tell you what you'll need to use Spelling Checker with Pinpoint Desktop Accessories and AppleWorks
- ▲ Describe what we'll be talking about in the rest of this guide

### The Pinpoint Spelling Checker

*Wow, This Guy Can't Even Spell!* One bungled word can spoil an entire document. But not with the Pinpoint Spelling Checker by your side. Spelling Checker is a new accessory for the Pinpoint Desktop. Pop it up and quickly check individual words, paragraphs, or entire documents without ever leaving AppleWorks behind. Check for misspellings from a 56,000 word main dictionary and an unlimited personal dictionary.

It suggests up to 10 alternative spellings, corrects words and reformats as it corrects. If you don't choose any of the suggested alternative spellings, you can edit the word yourself. Or add the word to your personal dictionary so next time Spelling Checker will know and spell that new word correctly.

### Fitting Words

Spelling Checker doesn't waste your time with uncalled-for words. You may have seen spelling checkers that offer 100,000 word dictionaries. Spelling Checker's dictionary contains about 56,000 words. The problem with the larger dictionaries is that they contain obscure, archaic words that take up too much storage

## Chapter 1

## Introducing Spelling Checker

space and too much time when spell-checking. For example, an overwhelming majority of people would write "I want the mechanic to 'align' my front end" before they would write "I want the mechanic to 'aline' my front end," even though both spellings are correct. Therefore, even though "aline" is a word, it is not really needed in the dictionary.

Including "aline" in the dictionary could do more than just use up precious storage space and extend spell-checking time. What if you accidentally transposed the "e" and the "n" in "alien" and wrote "The extra-terrestrial has double parked his flying saucer. This makes him an illegal aline?" A spelling checker which includes "aline" in its dictionary would not catch this error. Such an oversight would make an already terrible joke really fall flat on its face! This is just one of numerous cases where uncommon words included in spelling checker dictionaries can prevent a spelling checker from finding misspellings of more common words.

### I Wonder If I Spelled That Correctly

*Well, just Spell-Check it.* Right Now. That's what Pinpoint technology is all about; the ability to do two things at once. In computereze, we call it limited multi-tasking.

Other spelling checkers require you to exit AppleWorks; boot up separate spelling checker software; spell-check the entire word processing file; exit the spelling checker software; re-boot AppleWorks; load the spell-checked word processing file into AppleWorks, and begin word processing again. Whew! This just isn't the way people naturally work.

Spelling Checker is a second generation program. It lets you work the way you want because Spelling Checker sits in your AppleWorks desktop, just like a dictionary in book form sits on your desk. Because Pinpoint technology allows AppleWorks and Spelling Checker to run at the same time, individual words, spreadsheet and database entries, and entire paragraphs and documents can be checked whenever you want.

### Playing the Field

Pinpoint technology manages concurrent memory-resident applications, like Spelling Checker and AppleWorks, by convincing each application that it has the whole computer to itself. Pinpoint does this by freezing the application not being used in its own memory environment, and revitalizing the frozen application when you're through using the other application. A sort of computerized cryogenics, if you will. Using this technique, Pinpoint parcels up physical resources like disk files and video display to the two applications, and shuttles messages between the two applications without either knowing much about the other.

# Chapter 1

## Here's What You Need

## Introducing Spelling Checker

### Hardware Requirements:

- ▲ Enhanced Apple IIe or Apple IIc, 128k minimum memory
- ▲ Plain 128K Apple IIe with Pinpoint's Upgrade Kit
- ▲ At least two disk drives

## Software Requirements

- ▲ Pinpoint Version 1.1 or greater
- ▲ AppleWorks 1.0, 1.1, 1.2 or 1.3

## Here's What You Want

Spelling Checker works just fine with the hardware and software listed above, but you can supercharge Spelling Checker with the hardware and software listed below.

## For Best Performance

### Recommended Hardware:

- ▲ 256K to 1MB RAM drive
- ▲ Hard Disk or UniDisk 3.5.

### Recommended Software:

- ▲ Pinpoint RAM Enhancement Kit
- ▲ Appleworks version 1.3

There are some real advantages to using Spelling Checker with a hard disk or UniDisk 3.5. For Starters, Spelling Checker can automatically copy itself and the main dictionary onto a high capacity disk. Keeping Spelling Checker and the dictionaries on your high capacity disk increases Spell-Checking speed, reduces disk shuffling, and allows you to add more and more words to your personal dictionary. All features you'll find quite valuable.

RAM drive owners will experience Spelling Checker at its best because access to Spelling Checker and its dictionaries is instantaneous, spell-checking time is greatly reduced, plus disk shuffling is largely eliminated after you've loaded AppleWorks.

# Chapter 1

## Here's What We'll Do

# Introducing Spelling Checker

*Chapter 2: Getting Spelling Checker Ready.* First, we'll create working copies of the original Spelling Checker disk. Then we'll tailor Spelling Checker's many options to your specifications and install Spelling Checker onto Pinpoint's Desktop using the Spelling Checker Installation Program.

Then, we'll introduce Spelling Checker to AppleWorks by installing the modified Pinpoint Desktop onto AppleWorks. Chapter 2 also describes using a high capacity disk or a RAM drive with Spelling Checker.

*Chapter 3: Using Spelling Checker.* In Chapter 3, we'll learn how to use Spelling Checker to check words, paragraphs, documents, spreadsheets and databases.

Let's get going.



# Chapter 2

## Getting Spelling Checker Ready

First of all, we'll create working copies of the original Spelling Checker diskette. Then we'll install Spelling Checker onto Pinpoint exactly the way you want by using the Spelling Checker Installation Program.

Next we'll introduce Spelling Checker to AppleWorks by installing the modified Pinpoint Desktop onto AppleWorks. This chapter also tells you how to use a higher capacity disk drive or a RAM drive with Spelling Checker.

This chapter will:

- ▲ Help you make working copies of the Spelling Checker disk
- ▲ Guide you through the Spelling Checker Installation Program
- ▲ Briefly tell you how to install the modified Pinpoint Desktop onto AppleWorks
- ▲ And help you use Spelling Checker with a higher capacity disk drive or a RAM drive

## Chapter 2

### Getting Spelling Checker Ready

## Getting Spelling Checker Ready

*You've always wanted to be a disk jockey.* Seriously though, we all know it takes a little time to get a good thing going. But then again, sometimes good things are hard to come by. Now, if you take the time to maneuver the necessary disks, we're sure you and Spelling Checker will have a long, meaningful relationship.

Getting Spelling Checker ready can involve up to five steps:

- A. Create working copies of the Spelling Checker disk
- B. Set up for a high capacity disk drive (Skip ahead to step C if you don't have a high capacity disk)
- C. Install Spelling Checker onto Pinpoint exactly the way you want using Spelling Checker's Installation Program
- D. Let AppleWorks know about Spelling Checker by installing the copy of Pinpoint you created in step C onto a copy of AppleWorks
- E. Set up for a RAM drive (Skip this step if you don't own an extended RAM card)

**Complete these steps in the order of their appearance.**

Everybody must complete steps A, C, and D. Step B should only be completed if you have a high capacity disk drive. Step E should only be completed if you have an extended memory card (configured as a RAM Drive). That's all there is to it. So let's start spell-checking in style.

### Step A. Creating Working Copies of the Spelling Checker Disk

The disk we provided you will not work because it is write-protected. You can tell because it has no notches. You must use non-write-protected copies of Spelling Checker. We provided you a write-protected disk to help you protect your investment.

So before you do anything with Spelling Checker, please use Central Point Software's Copy II Plus, the Apple IIc System Utilities, the Apple IIe ProDOS Filer or any ProDOS copy routine to make copies of the disk we provided you according to the directions below. Use the copies as your work disks and do not put write-protect tabs on them (covering up the write-protect notches on the side of the disk jacket).

Keep the original disk in a safe place. This way, if somebody uses your work disks as doilies for tea, or to make high-tech refrigerator magnets, you can replace them by making additional copies of the original disk.

To create working copies of the Spelling Checker Disk:

## Chapter 2

## Getting Spelling Checker Ready

1. Use your ProDOS copy routine to copy each side of the Spelling Checker disk onto separate disks

You should have one disk with the Spelling Checker Accessory side copied onto it, and another disk with the Dictionary side copied onto it.

### Step B. High Capacity Disk Set Up

You should complete step B only if you have a high capacity disk drive and if you didn't specify a ProDOS path as the standard location for your accessories when you installed Pinpoint.

If you have to complete step B:

1. Boot your copy of the Pinpoint "/PP.INSTALL" disk.
2. Refer to the section entitled "Setting a Standard Location For Your Accessories" in the Installation chapter of your Pinpoint User Guide.
3. Enter a ProDOS path as the standard location of the desktop accessories on the Pinpoint "/PP.INSTALL" disk. Make sure you use the "quit" option. It will save your changes.

We suggest entering "/x/PINPOINT/" as the standard location, where "x" equals the volume name of your high capacity disk.

### Step C. Installing Spelling Checker

*Eight Isn't Enough.* You won't find Spelling Checker on your original Pinpoint disk. The Spelling Checker installation program introduces Spelling Checker to the original accessories. The installation program requires you to specify your version of AppleWorks, lets you set the default Spelling Checker options, specify a standard location for the dictionaries, and installs Spelling Checker according to your specifications by modifying both the "PINPOINTPROFILE" file on the Pinpoint Installation disk and the "SPELLER.PP" file on the Spelling Checker Installation Disk.

### Running the Spelling Checker Installation Program

To start the installation program:

1. Boot your non-write-protected copy of the Spelling Checker Installation Disk

## Chapter 2

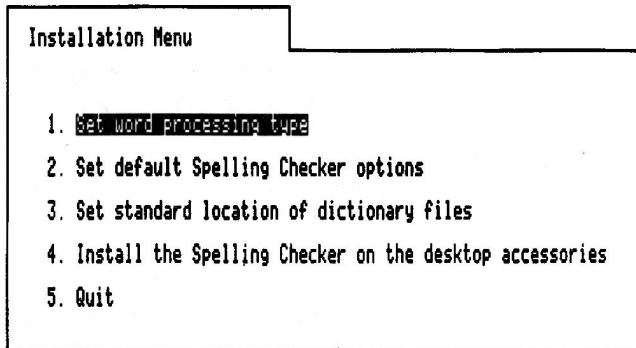
## Getting Spelling Checker Ready

After several seconds, the Spelling Checker Installation Menu will appear. In fact, we have included a little slide show to help you visualize the Installation Procedure before you get going. Just follow the on-screen instructions.

**Figure 2.1**  
**Spelling Checker Installation**  
**Menu**

Path: /PP.SPELL/

SPELLING CHECKER INSTALLATION



Type number, or use arrows, then press Return

⌘-? for help

The Spelling Checker Installation Menu lets you:

1. Tell Spelling Checker what version of AppleWorks you're using
2. Set default Spelling Checker options
3. Tell Spelling Checker where you want it to look for the dictionaries when it spell checks
4. Install Spelling Checker on the Desktop Accessory disk
5. Or you can decide to forget the whole thing and go on using "i" before 'e' except after 'c' " as a spelling checker

It's easy to choose one of the options on the Spelling Checker Installation Menu:

1. Type the number preceding the desired option, or use an ARROW key to move the highlighting cursor to the desired option
2. And press RETURN

## Chapter 2

### Specifying Your Word Processor

## Getting Spelling Checker Ready

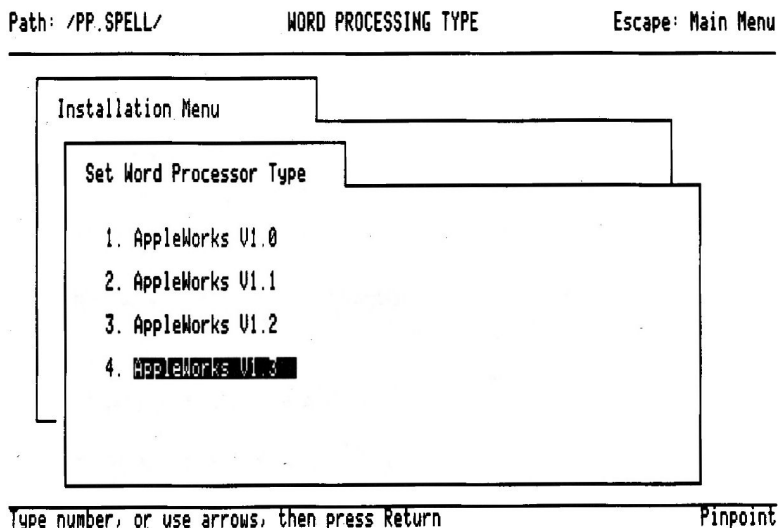
Spelling Checker must know what version of AppleWorks you're using so it can properly move about your documents.

To specify your word processor:

1. Choose the "Set Word Processing Type" option from the Spelling Checker Installation Menu (please see figure 2.1)

The Word Processor Type Screen will appear.

**Figure 2.2 Word Processor Type Screen**



Now:

1. Type the number preceding your version of AppleWorks, or use an **ARROW** key to move the highlighting cursor to select your version of AppleWorks
2. And press **RETURN**

### Setting Default Spelling Checker Options

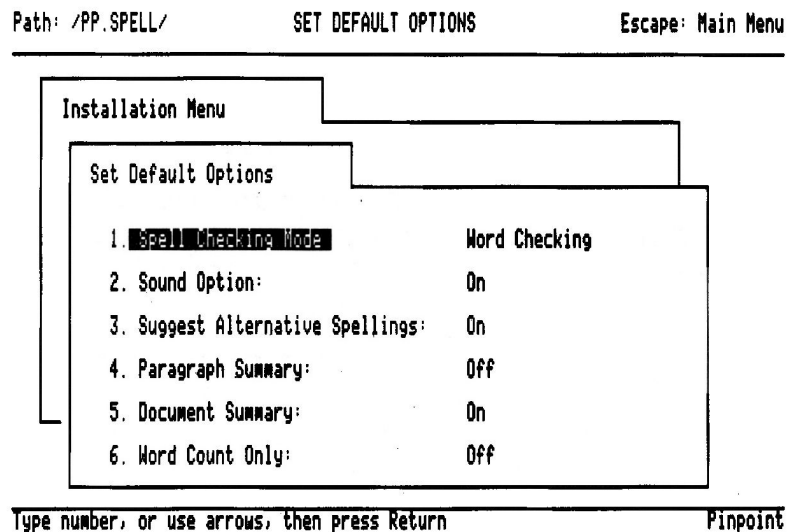
*As You Like It.* Teachers, students, business professionals; we all need different things from a spelling checker. Spelling Checker lets you tell it how you want to spell-check.

To set default Spelling Checker options:

1. Choose the "Set default Spelling Checker options" option from the Spelling Checker Installation Menu (please see figure 2.1)

The Set Default Options Screen will appear.

**Figure 2.3 Set Default Options Screen.**



The Set Default Options Screen lets you:

1. Specify the word, paragraph or document mode as the default spell-checking mode if you're a hot-shot speller that only spell-checks when you're done writing a paragraph or an entire document. We think of this as the "disaster check" to keep everything looking good
2. Make Spelling Checker work quietly if the sound of a beeping computer makes you nervous
3. Tell Spelling Checker not to suggest any alternative spellings. A useful option if you're a teacher who wants to use your Apple to teach students how to use a conventional dictionary. It's a great tool for improving spelling and vocabulary skills while they work
4. Skip the summary of the paragraph and document spell-checking sessions. The summary tells you how many words were checked, how many suspect words were found, how many corrections were made, and how many words were added to your personal dictionary
5. Turn the word count option on if you want to count the words in your paragraph or document without waiting to spell-check.

## Chapter 2

## Getting Spelling Checker Ready

To set the default spell-checking mode:

1. Choose the "Spell Checking Mode" option from the Spelling Checker Installation Menu (please see figure 2.3)

The Spell Checking Mode screen will appear. Now:

1. Type the number preceding the desired default spell-checking mode, or use an ARROW key to move the highlighting cursor to the desired default spell-checking mode
2. And press RETURN

The default spell-checking mode will be set and you will be returned to the set default options screen (please see figure 2.3).

### Default Spell-Checking Modes

To set the rest of the Spelling Checker default options:

1. Type the number preceding the default option you wish to change, or use an ARROW key to move the highlighting cursor to the default option you wish to change
2. And press RETURN

The cursor will drop to the bottom of the screen next to the "Change the Value?" prompt.

3. Type Y if you want to change the current value or N if you want to maintain the current value

**OR**

3. Use the LEFT or RIGHT ARROW key to move the highlighting cursor to "Yes" if you want to change the current value or to "No" if you want to maintain the current value and press RETURN.

The highlighting cursor will jump down to the next option.

4. Press ESCAPE to get back to the main installation menu when you're done setting the default options.

### Setting Your Dictionary Location

Spelling Checker is the toughest librarian around when it comes to locating its two dictionaries. If the dictionaries are in a drive, Spelling Checker will find them. After checking your extended memory card for the dictionaries, Spelling

## Chapter 2

### Getting Spelling Checker Ready

Checker determines if you've set a standard location for the dictionaries. If you did, it looks for the dictionaries at the specified location.

If Spelling Checker doesn't find the dictionaries in the location you've set, it checks the standard location of the desktop accessories you may have set when you installed Pinpoint. If the dictionaries are not there, then Spelling Checker serially checks the root directory of each drive for the dictionaries. If they are not found at this point, Spelling Checker asks you to insert the Dictionary Disk in a disk drive and press a key to continue. This is why you must install the dictionaries in a root directory, or declare a standard location.

**High capacity disk users:** You have to set a ProDOS path as the standard location for the dictionary files in order to use the Autocopy capabilities afforded to high capacity disk users. We suggest entering the same standard location that you specified for the standard desktop accessory location on your Pinpoint "/PP.INSTALL" disk.

To set a standard location of the dictionary files:

1. Choose the "Set Standard Location of Dictionary Files" option from the Spelling Checker Installation Menu (please see figure 2.1)

The Set Dictionary Location Screen will appear.

Now:

1. Type the number preceding the desired location, or use an **ARROW** key to move the highlighting cursor to the desired location
2. And press **RETURN**

If you're using a high capacity disk, choose the last option, "ProDOS Path."  
Then:

1. Enter the ProDOS path to the dictionaries at the "enter value" prompt that appeared near the bottom of the screen. We suggest entering the same ProDOS path you entered for the standard location of the desktop accessories on your "/PP.INSTALL" disk.
2. Press **RETURN**

#### Installing Spelling Checker on the Desktop Accessories

Once you've told the Spelling Checker Installation Program how you want Spelling Checker installed, you can go ahead and let the Installation Program install Spelling Checker onto a copy of your Pinpoint Installation Disk.



## Chapter 2

### Getting Spelling Checker Ready

To install Spelling Checker on the Desktop Accessories:

1. Make sure the the Spelling Checker “/PP.SPELL” disk is in drive 1
2. Place the Pinpoint “/PP.INSTALL” disk in drive 2

**High capacity disk users:** At this point in the installation program, you should make sure your hard disk is plugged into the computer or that your 3.5” micro disk is in the UniDisk 3.5 drive.

3. Choose the “Install the Spelling Checker on the Desktop Accessories” option from the Spelling Checker Installation Menu (please see figure 1)

#### The Disk Drive Lights will Start to Flicker

If you forgot to put your Pinpoint Installation Disk in a drive, you will be reminded to do so. As the installation proceeds, you will see a couple of messages on the screen. One will read:

“Updating PINPOINTPROFILE”

The other will read:

“Updating SPELLER.PP”

High capacity disk users who are autocopying Spelling Checker files will see the following dialog box on the screen:

Do you wish to have the Spelling  
Checker Accessory software “SPELLER.PP”  
copied to the standard location for  
the desktop accessories?

#### Yes/No Simplicity

To answer:

1. Press RETURN for “yes”
2. Or press ESCAPE for “no”

Then, if there is a standard location defined for the dictionary files, and it is a ProDOS path, high capacity disk users will see the following dialog box on the screen:

Do you wish to have the Dictionary  
File “MAIN.DICT” copied to the  
Standard Location defined for the  
Dictionary?

## Chapter 2

## Getting Spelling Checker Ready

To answer:

1. Press RETURN for “yes”
2. Or press ESCAPE for “no”

### A Dictionary to Call Your Own

The personal dictionary, “AUX.DICTS,” is not copied to your hard disk/UniDisk 3.5. It will be created as needed. This way, if you receive an update of Spelling Checker, your personal dictionary will remain intact during installation of the updated Spelling Checker.

When the installation is complete, you will see a large prompt explaining that you must re-install Pinpoint onto AppleWorks so that AppleWorks knows about Spelling Checker.

### Step D. Install Modified Pinpoint onto AppleWorks

*Open Wide AppleWorks, Pinpoint's Got a New Accessory.* After introducing Spelling Checker to the original Pinpoint Desktop Accessories, you must introduce Spelling Checker to AppleWorks by installing the Pinpoint created in step C onto a copy of AppleWorks.

**NOTE:** If you use desktop expander software with your RAM Drive, you must patch AppleWorks before installing Pinpoint onto AppleWorks. Please consult your RAM card manufacturer for complete information.

Spelling Checker will only work with AppleWorks. Although it can be installed on ProDOS BASIC, the Pinpoint's Tutorial, Manzanita BusinessWorks, Pinpoint's Point-to-Point telecommunications software, or Pinpoint's InfoMerge mailing program, Spelling Checker will not spell-check any of these applications. In addition, if you installed the Pinpoint Graphic Printer Kit prior to installing Spelling Checker, you must re-install the Printer Enhancement Kit.

To re-install Pinpoint onto AppleWorks:

1. Turn off the computer
2. Place the Pinpoint Installation disk you created in step C in a disk drive

Now

3. Turn on the computer
4. Turn to the section entitled “Putting Pinpoint Onto An Application” in your Pinpoint User Guide

### Step E. Set Up for Extended RAM Use

5. And follow directions

You only need to consider the advice in this section if you have an extended memory card.

To set up for a RAM drive:

1. Make a fresh copy of the original Pinpoint “/ACCESSORY” disk.
2. Copy the Spelling Checker accessory software, “SPELLER.PP,” from the Spelling Checker Installation Disk you modified in step C onto the fresh copy of the Pinpoint “/ACCESSORY” disk.
3. Now you will only have to insert this Pinpoint “/ACCESSORY” disk in a drive when you are asked to place the accessory disks into the drives during the uploading of files to the RAM drive.

If you are using Pinpoint’s RAM Enhancement Kit you should also do the following:

1. Run the RAM Enhancement Kit with the Pinpoint “PP.INSTALL” disk you modified in step C.
2. Specify “YES” next to “Spelling Checker” on the RAM Enhancement Kit’s “Accessory Autocopy Selection Screen.”
3. Include the dictionary files “MAIN.DICT” and “AUX.DICT.S” on the RAM Enhancement Kit’s “ProDOS File Autocopy Selection Screen” if you want to copy the dictionaries to the RAM drive. The dictionary files are large (about 100k), so make sure you have enough RAM, and be prepared to wait a little while longer while the dictionaries are being copied to the RAM drive.

**Caution:** A RAM drive is perishable. When the power to the computer is turned off, you will lose any words you added to the personal dictionary unless you copy the personal dictionary file, “AUX.DICT.S,” to a floppy, or high capacity disk after you exit AppleWorks and before you turn off the power to your computer. Use the ProDOS filer, or another ProDOS copy routine to copy the personal dictionary file to disk. The RAM Enhancement Kit User Guide contains an appendix you may want to read entitled “Copying Data Files From RAM to Disk.”

# Chapter 3

## Using the Spelling Checker

### Using the Spelling Checker

You've done all the dirty work, now it's time to reap the benefits. This chapter will:

- ▲ tell you how to spell check a word, paragraph, document, spreadsheet cell, or database field

### And Now For the Moment We've All Been Waiting For

*Let's spell-check!* You might consider using Spelling Checker as soon as you create or load a word processing, spreadsheet, or data base file in the AppleWorks Desktop. Once you load Spelling Checker, it will be by your side when you need it.

**NOTE:** You cannot spell-check an AppleWorks menu. If you try, your Apple will send you a gentle "beep."

### To use Spelling Checker with AppleWorks

1. Boot the copy of AppleWorks you created in Chapter 2
2. Load or create your word processing document, spreadsheet file, or data base file into the AppleWorks desktop
3. Work on the word processing, spreadsheet, or database file until you want to spell-check it
4. Save the word processing, spreadsheet, or data base file to disk so you'll have a recent backup copy of the file if something goes wrong. Repeat, please SAVE your work so you won't ever be sorry



— by pressing SOLID-APPLE-M

## Changing Spell Checking Modes

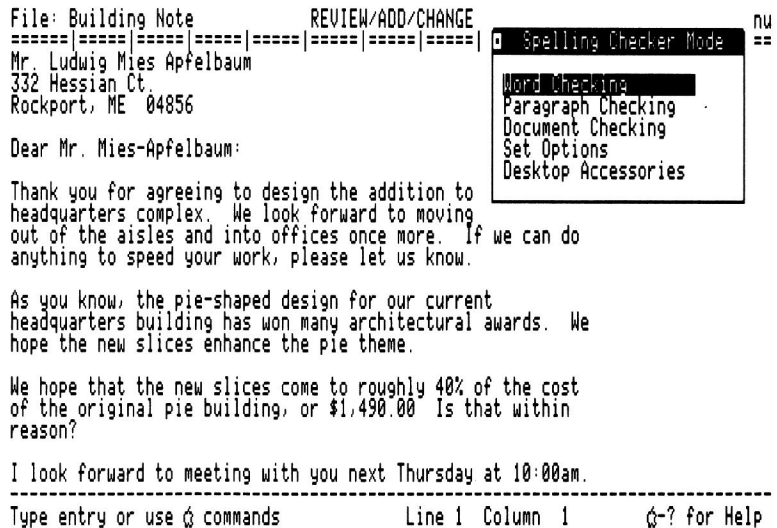
*Take Your Pick.* Unless you changed the default spell-checking mode setting when you installed Spelling Checker, Spelling Checker automatically loads in word mode. Use word mode to spell-check an individual word, a spreadsheet cell, or a database field. If you want to spell-check a paragraph or a document, reset one or all of the default Spelling Checker options, or re-enable desktop accessories, you can do so by pressing SOLID-APPLE-M.

To change Spelling Checker Modes:

1. Press SOLID-APPLE-M

The Spelling Checker Mode Menu will appear.

**Figure 3.2**  
**Spelling Checker Mode Menu**



The Spelling Checker Mode Menu instructs the Spelling Checker to begin one of the following spell-checking modes the next time you press SOLID-APPLE-P:

1. Spell-check a word, spreadsheet cell, or database field
2. Spell-check a paragraph
3. Spell-check a document

# Chapter 3

# Using the Spelling Checker

- 4. Temporarily change the default Spelling Checker options
- 5. Or exit Spelling Checker and re-enable all the desktop Accessories, and pop-up the Pinpoint Desktop Accessory menu

## To Choose A Mode on the Spelling Checker Mode Menu

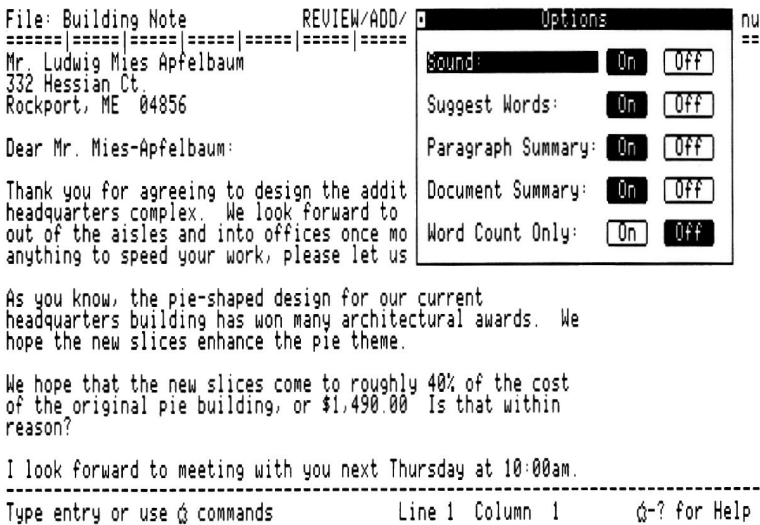
- 1. Use the ARROW keys to move the highlighting cursor to the desired mode
- 2. Press RETURN

If you choose the “Desktop Accessories” mode:

- 1. Press SOLID-APPLE-P to pop-up the Accessory menu

If you choose the “Set Options” mode, the Options Menu will appear.

**Figure 3.3**  
**Options Menu**



The Options Menu lets you

- 1. Turn the Spelling Checker sounds on or off, depending on how late it is and whether or not your roommate owes you money
- 2. Ask Spelling Checker to suggest or to keep alternative spellings to itself, depending on how smart or reckless you're feeling
- 3. Skip or view the summaries of the paragraph and document spell-checking sessions, depending on how badly you think you did. The paragraph

## Chapter 3

## Using the Spelling Checker

summary tells you how many words were checked, how many suspect words were found, how many corrections were made, and how many words were added to your personal dictionary

4. And turn the word count on or off, depending on if you want to see how much of your 500 word essay you have to finish

### **To change the settings on the Options Menu:**

1. Use an UP or DOWN ARROW key to move the highlighting cursor to the desired option
2. Use a RIGHT or LEFT ARROW to move the highlighting cursor to "On" or "Off"
3. And press ESCAPE to exit back to the word processor, spreadsheet, or data base

### **To Spell-Check a Word**

1. Load Spelling Checker if you haven't already done so
2. Position the cursor anywhere on or to the immediate left of the word you want to check
3. Press SOLID-APPLE-P to spell check either the word that the cursor is on, or, if the cursor is not on a word, the word to the right of the cursor

The word you want to spell-check will become highlighted. If the word is correct, you will hear a high pitched beep. If the word is incorrect, the Pinpoint Spelling Checker Menu will appear.



## Using the Spelling Checker

```
REVIEW/ADD/CHANGE                                Escape: Main Menu
```

<div>Pinpoint Spelling Checker</div> <div>Suggested Spellings:</div> <div>A. Amazing B. Amassing C. Ambling D. Amending E. Amusing</div>	==== ==== ==== ==== ==== ==== ==== ==== ==== <div>ground on the ground-breaking s complex. <u>Amazing</u>.</div> <div>Ludwig Mies Apfelbaum, has objects around the world. The ters in Osaka is but one ficant designs have won m in his home town of</div> <div>Edit the word Add the word Esc Continue onward Q-? Help</div>
--	---

Apfelbaum has charted a new course in architectural design. Many of his designs center around a major theme that reflects his client's focus. For example, the Queueque Museum is in the shape of a great white whale to honor the namesake of the museum, the great whaleman Queueque.

---

Type entry or use Q commands                  Line 2 Column 45                  Q-? for Help

1. Choose a replacement for the misspelled word from up to 10 suggested alternative words
2. Edit the word yourself instead of using one of the suggested alternatives
3. Add the word to the personal dictionary so the Spelling Checker will know the word is correct the next time the word is encountered
4. Exit the Pinpoint Spelling Checker Screen and continue with other work
5. Or ask for help if what you just read didn't make any sense

1. Type the letter or use the keystroke to the left of the desired option
2. Press RETURN

1. Use the **ARROW** keys to move the highlighting cursor to the desired option
2. Press **RETURN**

## Chapter 3

## Using the Spelling Checker

### Choosing a Suggested Spelling

*Some Moving Words.* If you choose to replace a misspelled word with one of the suggested alternatives, check out the screen. Spelling Checker eases the pain of misspellings with moving words. It's designed this way to guide your eye back to the cursor location and because, let's face it, it's neat to see stuff like that.

### Editing the Word

*I Wanna Do It Myself.* If you would like to take a second crack at spelling the word correctly, or if there were no suggested alternatives because the word wasn't in the dictionaries, use the "Edit the Word" option to correct the word yourself.

The "Edit the Word" option returns you to the first character of the word you spell-checked for editing. Your cursor will be in the "overstrike mode." This means that the misspelled word will not run away from you as you edit it. If you have to change the length of the word you are editing, you may have to use the OPEN-APPLE-E (for Edit) to toggle the cursor from "overstrike" to "insert" mode to make the rest of the sentence scoot over for the new word.

Pressing SOLID-APPLE-P restarts the spell-checking process, checking from the cursor position to the end of the paragraph or document, or re-checking the same word if you're in "word" mode.

### Adding Words to the Dictionary

*Hey, I Spelled that Right.* If you are sure you spelled a word correctly, but the Spelling Checker says that the word was misspelled, you should add the word to your personal dictionary so next time, Spelling Checker will know the word is correct. When you choose the "Add the word" option, the word will lose its highlight once the word has been added.

### Continue Onward

*I Can Take It, Show Me My Next Mistake.* In the word mode, the "Continue Checking" option will return you to the cursor location of the word that you spell-checked. This is similar to what the "Edit the Word" option does in every mode. In the paragraph and document modes, however, "Continue onward" will move you to the next misspelled word it finds.

### Oh No! Not Again

If Spelling Checker finds a word that you've consistently misspelled throughout the entire document, you should exit Spelling Checker and use AppleWorks' search and replace capability which is invoked with OPEN-APPLE-R. AppleWorks & Pinpoint's teamwork to the rescue again!

### Spell-Checking a Spreadsheet Cell

Spelling Checker spell-checks AppleWorks spreadsheet cells. You can only spell-check a spreadsheet cell using "word" mode.

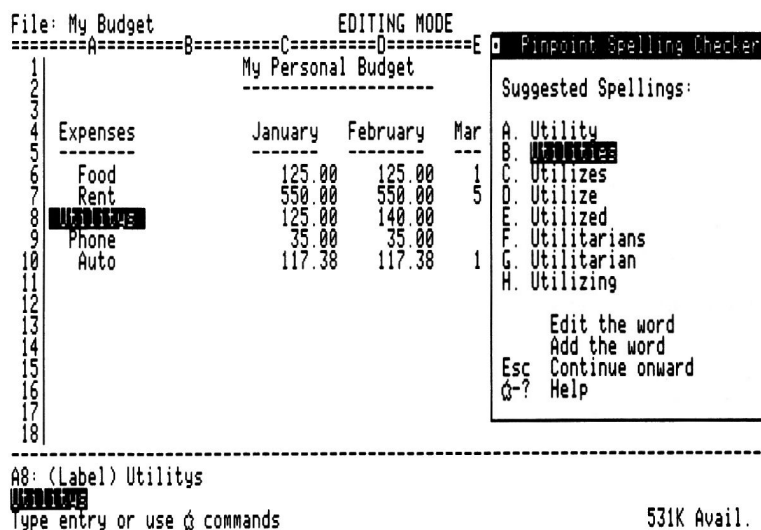
## Chapter 3

## Using the Spelling Checker

To spell-check a spreadsheet cell:

1. Make sure you are in WORD mode
2. Position the cursor to the desired cell
3. Press SOLID-APPLE-U, the AppleWorks "cell-edit" key
4. Press SOLID-APPLE-P to spell-check the word

**Figure 3.5**  
**Spell-Checking a**  
**Spreadsheet Cell**



### Spell-Checking a Database Field

Spelling Checker can spell-check an AppleWorks Database field. You can only word spell-check a database field.

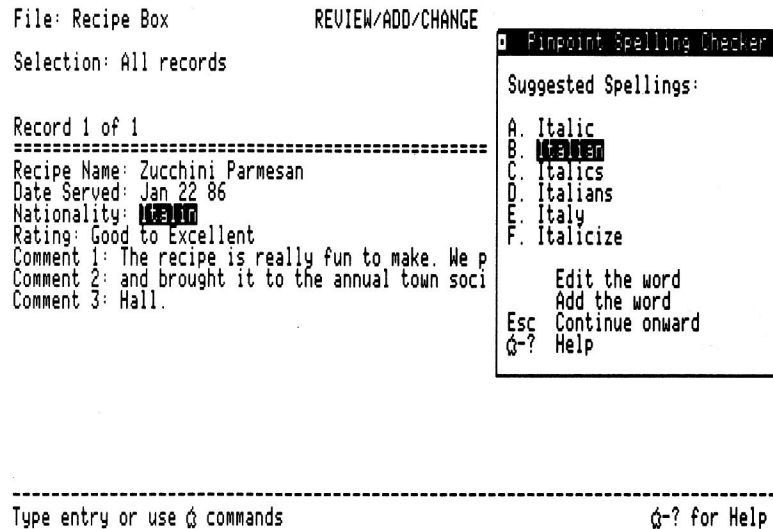
To spell-check an AppleWorks database field:

1. Make sure that you are in WORD mode
2. Position the cursor to the desired field
3. Press SOLID-APPLE-P to spell-check the field

## Chapter 3

## Using the Spelling Checker

**Figure 3.6**  
**Spell-Checking a Database**  
**Field**



### Spell-Checking a Paragraph

To spell check a paragraph:

1. Change the mode to paragraph using the SOLID-APPLE-M key, which stands for Mode
2. Position the cursor anywhere within the paragraph you want spell-checked. The paragraph will be spell-checked from the cursor position down to the first blank line Spelling Checker finds. If there are no blank lines between your paragraphs, the entire document will be spell-checked
3. Press SOLID-APPLE-P to start spell-checking

If you want to abort the spell-check:

1. Press the ESCAPE key

### Spell-Checking a Document

To spell-check a document:

1. Change the mode to document using the SOLID-APPLE-M key
2. Position the cursor anywhere within the document you want spell-checked. The document will be spell-checked from the cursor position down to the end of the document. Pressing OPEN-APPLE-1 will position the cursor at the top of the document

## **Chapter 3**

### **Using the Spelling Checker**

3. Press **SOLID-APPLE-P** to start spell-checking

If you want to abort the spell-check:

1. Press the **ESCAPE** key

# **Appendix A:**

## **Error Messages**

### **Installation Error Messages**

The following error messages can occur during the installation process:

#### **DISK WRITE ERROR-DISK NOT UPDATED**

A disk I/O error occurred while reading or writing to a disk. Check your disk drives. Make sure the disk is inserted properly in the disk drive, and the disk drive door is closed. You may wish to recopy your original Pinpoint disks and re-attempt the installation process.

#### **PHYSICAL DISK I/O ERROR!**

A disk I/O error occurred. See explanation above.

## Appendix A

### Spelling Checker Error Messages

## Error Messages

### DISK IS WRITE-PROTECTED!

The disk cannot be written to. See "DISK IS WRITE-PROTECTED" below.

When you attempt to add a word to your personal dictionary, it must update the file "AUX.DICT.S." In order to do this, it first makes a working copy of the file. This implies that there must be adequate room on the disk to hold a backup copy of the "AUX.DICT.S" file. This same situation is true when you save an AppleWorks file to disk.

When an error occurs, a dialog box will appear on the screen telling you about the error. It may contain some supplementary information. This is contained in the dialog box above the line "Press the Spacebar..." The following supplementary messages are available:

### DISK IS WRITE PROTECTED

The disk containing the Spelling Checker dictionary files is write-protected. This means that a disk drive cannot write to it. The personal dictionary cannot be updated. Make sure that you are using a copy of the dictionary disk. The original dictionary disk does not contain any "write-notches" on it. If you are using a UniDisk 3.5, make sure the disk is write-enabled. There is a movable tab at the top of the UniDisk 3.5" disk that should be set properly.

### VOLUME SWITCHED

The disk that originally contained the dictionary files has been switched. Do not switch the floppy diskettes once the spell-checking process has begun.

### VOLUME NOT MOUNTED

The volume which contains the personal dictionary is no longer present. If, for instance, you have your dictionary files stored on a UniDisk 3.5, and the disk, has been removed from the drive, this error could arise. Make sure that the volume containing the personal dictionary (as well as the main dictionary) is present.

### FILE "AUX.DICT.S" NOT FOUND

The personal dictionary file cannot be located for some reason. The diskette may have been switched. Make sure that your personal dictionary is present with the main dictionary on the same volume.

### DISK IS FULL

Your diskette (UniDisk 3.5, RAM drive, or hard disk) does not contain adequate

## Appendix A

### Error Messages

space to update your personal dictionary. You should move your dictionary files to a larger volume, or assure that more space is available on the existing volume.

#### **FILE "AUX.DICT.S" IS LOCKED**

Your personal dictionary, "AUX.DICT.S," IS LOCKED. Software cannot write to that file. It must be unlocked with ProDOS Filer, or the System Utilities disk.



# Appendix B

## ProDOS Pathname Primer

### What is ProDOS

ProDOS is a collection of programs that controls Apple disk drive functions such as loading, saving, copying, and erasing your work files.

### What's a ProDOS Pathname?

A ProDOS Pathname is ProDOS's map to the specific work file you want ProDOS to load, save, copy, or erase.

### What's in a ProDOS Pathname?

A ProDOS pathname is made up of a VOLUME name, DIRECTORY names, and a FILE name. A VOLUME name identifies the floppy, hard, high capacity, or RAM disk on which your work resides. A DIRECTORY name identifies the section of the floppy, hard, high capacity, or RAM disk in which your work resides. A FILE name identifies your computer work. There can be as many as one VOLUME name, 49 DIRECTORY names, and one FILE name in a ProDOS pathname.

### ProDOS Pathname Spelling

The name can be up to fifteen characters long. There can be no blank spaces. It is common practice to substitute blank spaces with periods:

**LE.PETIT.PRINCE**

The name must begin with a letter from the alphabet:

**ON.CLOUD.9**

Characters two through fifteen of the filename may contain any combination of letters, numbers, and periods:

**TWO.4.6.8.**

### ProDOS Pathname Syntax

A ProDOS Pathname starts with the most general name, and ends with the most specific name, like this:

**/VOLUME.NAME/DIRECTORY.NAME/FILE.NAME**

### Connecting the Names

Connect the names with slashes, and start the pathname with a slash because ProDOS will recognize what follows the initial slash as instructions to your work file.

### When your computer asks for the PREFIX or PATH, not the PATHNAME

When a computer program asks you for the PATH to your work file, subtract the FILE name like this:

**/VOLUME.NAME/DIRECTORY.NAME/**

### When your Computer only asks for the FILE name

When a computer program asks for the FILE name, subtract the VOLUME name and the DIRECTORY name(s) like this:

**/FILE.NAME**

# APPENDIX C:

## Removing Words from the Personal Dictionary

The personal dictionary, "AUX.DICTS," is a simple text file that contains a sorted list of words you've added. The personal dictionary can be edited with AppleWorks. You would edit the personal dictionary to remove words from the personal dictionary because the words must be alphabetized in order for Spelling Checker to work properly.

**NOTE:** Do not add words to the Personal Dictionary in any other way, other than with the Spelling Checker's own software.

The personal dictionary is not an AppleWorks file. It is a text file. Its filename is "AUX.DICTS".

The entire pathname is "/PP.DICT/AUX.DICTS". If you've got the dictionary installed under another path, you should:

1. Make a note of the pathname
2. And specify this pathname when prompted for one

To remove words from the personal dictionary:

1. Back up the dictionary disk. If something goes wrong, at least you'll have your most recent dictionary.
2. Start AppleWorks. Select function 1, "Add files"
3. Select function 3, "Create a Word Processing Document"
4. Specify that you wish to create the AppleWorks file from a text (ASCII) file. This is function 2
5. Type in the pathname of the personal dictionary

## Appendix C

## Removing Words from the Personal Dictionary

6. Specify a new AppleWorks name. You won't be saving this file as an AppleWorks word processing file, so just type "temp" or something similar
7. You now should see a sorted list of words on your AppleWorks word processing screen. Use the OPEN APPLE-D (block delete) command to delete words as desired. DO NOT reorder the dictionary or add any words. Repeat. Do not Add Words.
8. Press OPEN APPLE-P (print). You want to print the modified personal dictionary back out to disk as an ASCII file
9. Print from the beginning as an ASCII text file. Type in the pathname of the personal dictionary

### Backup Your Personal Dictionary

1. Remember to back up your personal dictionary before modifying it, it is ok to destroy the old dictionary and replace it with the new one
2. Now remove the temporary AppleWorks file from the desktop without saving it

### PLEASE NOTE

If you are using the RAM Enhancement Kit, you may very well have loaded a copy of the personal dictionary to the RAM drive. Spelling Checker will locate this dictionary first, so you must recopy the new personal dictionary to the RAM drive if you plan to re-use Spelling Checker.

Use the "Removing Word" procedure in conjunction with a RAM drive to manage multiple personal dictionaries. The one residing on the RAM drive will be the one that Spelling Checker will use. Just use the AppleWorks printing functions to print the personal dictionary that you want to use out to the RAM drive as an ASCII text file.

# Appendix D

## Memory Usage and Compatibility

Pinpoint Spelling Checker is a fairly complex program. It runs co-resident with AppleWorks and Pinpoint. Spelling Checker uses some memory that is not used by AppleWorks or Pinpoint.

The Pinpoint Desktop Accessory Manager and Spelling Checker use the upper 16K of memory in the auxiliary memory bank. In addition, the upper half of the \$200 page (\$280 through \$2FF) as well as half of the \$300 page (\$32d through \$3BB) are used.

If you are using an AppleWorks that has been modified by some other software patch, Spelling Checker may not be able to run.

Spelling Checker has been tested and found compatible with the following AppleWorks modifications:

- ▲ AST Research Inc.'s MegaRAMPlus Utilities and the AST MegaRAMPlus card
- ▲ AST Research Inc.'s SprintDisk Utilities and the AST SprintDisk memory expansion card
- ▲ Applied Engineering's Super Desktop Expander and Applied Engineering's RamWorks II and Z-RAM cards
- ▲ Checkmate Technologies' AppleWorks Memory Expander and Checkmate

## **Appendix D**

### **Memory Usage and Compatibility**

Technologies Multiram IIe and Multiram-c cards

Various other software modifications to AppleWorks may cause Spelling Checker to run improperly. Consult your hardware/software manufacturer regarding compatability.

# Appendix E

## Other Pinpoint Products

### Other Pinpoint Products

#### **Pinpoint Apple IIe Upgrade Kit \$29.00**

- ▲ Permits Pinpoint and many 'new' Apple IIe software programs to run on plain Apple IIe with 128K
- ▲ Solves many of the compatibility problems older software programs have with the Enhanced Apple IIe
- ▲ Includes Mouse Text Video ROM, exact copy of Apple's Character Generator ROM #342-0265 approved by Apple
- ▲ Includes GTE or Rockwell 65C02 microprocessor
- ▲ Does NOT include Apple's proprietary 'CD' and 'EF' ROMs required for most mouse-based software. This Kit does not "Enhance" the Apple IIe. This Kit is only to be used on Apple IIe's
- ▲ This upgrade is performed at users' own risk
- ▲ Handy chip puller included

#### **Pinpoint RAM Enhancement Kit \$ 29.00**

- ▲ Configures partitioned RAM disks
- ▲ Automatically uploads non copy protected ProDOS applications and files to

## Appendix E

## Other Pinpoint Products

partitioned RAM disks

- ▲ Menu driven setup. Catalog with toggles displays programs/files to be uploaded.
- ▲ Includes a ProDOS RAM switcher for AppleWorks with Pinpoint and other ProDOS applications uploaded into RAM, such as Business Works accounting software, Point-to-Point communications software, or InfoMerge mail merge and print formatting program
- ▲ Requires Pinpoint Desktop Software

### **Pinpoint Modem Enhancement Kit \$ 29.00**

- ▲ Advanced modem software enhancement for Pinpoint's Communications Window
- ▲ Logon macros with default communications setups
- ▲ Keyboard and video character remapping, simple file encryption program
- ▲ Selective character filtering
- ▲ Required for Novation, Microcom and other non-standard external/internal modems or interface cards
- ▲ Contact Pinpoint for details
- ▲ Requires Pinpoint Desktop Software

### **Pinpoint Printer Enhancement Kit \$ 8.00**

- ▲ Advanced installation utilities for non-Apple standard printers and interface cards
- ▲ Simultaneous text and graphics printing
- ▲ Epson FX, RX, LX, and MX-80 with GraphTrax; Okidata 84, 92, 93, 192; H-P Thinkjet; Panasonic KX P1091, Smith-Corono D-200, Star Micronics SD-10 and SG-10 printers with standard interface cards, require the Pinpoint Printer Enhancement Kit to print graphics and text
- ▲ Printer interfaces supported include: Generic BASIC Standard, Generic Pascal 1.1 Standard, Orange Micro Grappler Serial and Grappler Parallel Cards, Star

## Appendix E

### Other Pinpoint Products

Micronics Grafstar and Grafstar II, Microtek Dumpling 64, Dumpling-GX, and RV-611C, Interactive Structures PKASO/U, and RC Systems Slot Buster

- ▲ Contact Pinpoint for details
- ▲ Requires Pinpoint Desktop Software

#### Micro Cookbook \$49.95

- ▲ Big 8th Edition. Over 100,000 copies sold
- ▲ Ask the computer what's for dinner. Enter ingredient, nationality, course or whatever, and Micro Cookbook offers up a menu with delicious possibilities
- ▲ Choose from Micro Cookbook's 150 tested recipes (supplied on the program disk) or add your own
- ▲ Selects recipes from any individual recipe disk or path, or automatically searches up to 8 others - over 4,000 recipes online for instant recall
- ▲ Automatically adjusts recipes for different serving sizes
- ▲ Automatic shopping list preparation
- ▲ Valuable on-line reference: nutrition facts, food selection and storage, and ingredient substitution suggestions
- ▲ Lighting fast operation with unparalleled ease of use
- ▲ Fourth-generation, bit-mapped database design finds plurals, truncations, multi-variant relations (7 simultaneous index keys), overlooks request errors, and generally works hard so you don't have to
- ▲ Versions available for Apple II (64K DOS 3.3), Apple IIc/IIe (128K DOS 3.3), Apple IIc/Enhanced Apple IIe with 128K (ProDOS), Commodore 63/128, and IBM PC, XT and jr.

#### Optional Recipe Disks \$19.95 to \$29.95

- ▲ How smart cooks eat better and waste less
- ▲ Optional recipe disks, over 3,000 exciting recipes, add variety to your menu
- ▲ Crowd-pleasing favorites include:



## Appendix E

## Other Pinpoint Products

- Appetizers
- Holiday Meals
- Desserts
- Soups & Salads
- Food Processor Cooking
- Meatless Meals
- Wok Cooking
- Kids Cookery
- California Beef
- Breads & Spreads
- Microwave Cooking
- Daily Bread & Beyond
- Daily Bread & Beyond, Food Processor
- Special Diets (includes food allergies)
- ...and more on the way!

### New for Spring 1986

#### **InfoMerge \$79.00**

On-screen, direct-print, mail-merge and print formatting program that works with AppleWorks. Automatically select names from AppleWorks database, or manually scan files forward/backward, add multiple keyboard inputs (great for invoices/forms), preview on screen before printing, or just print everything. One copy each or one-hundred or mix-and-match. Presto!

Optionally, print to disk files for use by other programs, such as telecommunications software like Point-to-Point or Pinpoint Communications Window. Pop-up any Pinpoint Desktop Accessory for added functionality.

#### **Point-to-Point \$129.00**

Powerful telecommunications program features the AppleWorks file card interface. Amazing "wait for text" and timed event conditional macros automate communications tasks. In fact, Point-to-Point has an applications programming language built right in. XMODEM binary and AppleWorks/Text file transfers supported, including 300-2400 Baud modem support! Direct connect local file transfers to 9600 Baud. Contact Pinpoint for details.

Pop-up any Pinpoint Desktop Accessory for added functionality. Including simultaneous communications sessions under Point-to-Point and Pinpoint's Communications Window!

## Other Pinpoint Products

### **Pinpoint Toolkit \$69.00**

Programmers resource and toolbox for writing Desktop Accessories all your own. Includes several handy desktop accessories for just about anyone, not just for programmers:

- ▲ Accessory mover for adding new accessories anytime
- ▲ Pop-up version of ProDOS Filer
- ▲ Screen printing facilities, text or graphics depending on printer type
- ▲ Enhanced printing for Desktop Appointment Calendars
- ▲ Decimal, Hexadecimal, or Binary Calculator with print tape

Outstanding tools for any serious ProDOS programmer include:

- ▲ Comprehensive Pinpoint Internal Architecture Documentation
- ▲ Video Resource Editor for accessory development and prototyping
- ▲ Pinpoint's newest interactive desktop environment, RUN-RUN, for expanded limited multi-tasking capabilities
- ▲ Commented source code to several Pinpoint Desktop Accessories provided as programming examples
- ▲ Programmer utilities require 256K or greater Enhanced Apple IIe or Apple IIc, ProDOS Assembly Language experience, or use of MICOL BASIC, or KYN PASCAL
- ▲ Contact Pinpoint for more information.

Contact Pinpoint for complete product information and scheduled release dates.

# Index

	/ACCESSORY/	2.11
	/PP.INSTALL/	2.3, 2.8, 2.9
	/X/PINPOINT/	2.3
	128K, Minimum Requirements	1.3
<b>A</b>	Abort spell-checking	3.9, 3.10
	Adding words to the Personal Dictionary	3.7
	Alphabetized Personal Dictionary	C.1
	Alternative Spellings	1.1, 3.7
	Appendices	A.1, B.1, C.1, D.1, E.1
	AppleWorks	1.1-1.4, 2.2-2.5, 2.10, 3.1
	AppleWorks Version	2.3, 2.4, A.1
	ASCII Characters	C.1
	Autocopy Capability	2.8
	AUX.DICT.S	2.10, 2.11, A.1, C.1
	Auxiliary Dictionary	2.10, 2.11, A.1, C.1
<b>B</b>	Backing up your disks	2.2
	Beeping	2.6, 3.1, 3.4, 3.5
	Booting Spelling Checker	2.3
<b>C</b>	Cell	3.2, 3.3, 3.7
	Cell-Edit mode	3.8
	Changing the Spelling Checker mode	3.3
	Choosing a selected alternative	3.7
	Co-resident	1.1, 1.2, D.1
	Compatibility	D.1
	Continue Onward	3.7
	Conventional disk drive	1.1, 1.2, D.1
	Copying data files from RAM to disk	D.1
	Creating working copies of Spelling Checker	2.2
<b>D</b>	Database spell-checking	3.8
	Default spell-checking mode	2.7
	Default Spelling Checker options	2.5

# Index

	Desktop Accessories	2.3, 3.4
	Dialog boxes	2.9
	Dictionary size	.1
	Dictionary location	2.7
	Disk I/O error	A.1
	Disk is full	A.1
	Disk is write protected	A.1
	Disk write error	A.1
	Document spell-checking	3.9
<b>E</b>	Edit the word	3.7
	Editing the word	3.7
	Error Messages	A.1
	Exit Spelling Checker	3.4
	Exit the Pinpoint Spelling Checker Screen	3.6
	Extended memory card	2.11
<b>F</b>	Floppy disk drive Spelling Checker use	3.2
<b>G</b>	Getting Spelling Checker ready	2.1
<b>H</b>	Hard disk	1.3
	Hardware Requirements	1.3
	High capacity disk	1.3
	High capacity disk set up	2.3
	High capacity disk users	2.8, 2.9
	High capacity drive	2.2
<b>I</b>	Installation	2.2, 2.3
	Installation Error Messages	A.1
	Installing Spelling Checker	2.3
	Installing Spelling Checker on the Desktop Accessories	2.8
	Instantaneous dictionary access	1.3
<b>L</b>	Locating the dictionaries	2.8
<b>M</b>	Memory Usage and Compatibility	D.1
	Memory-resident	D.1
	Mode	3.3
	Multitasking	1.2
<b>N</b>	Non-write protected copies	2.2
<b>O</b>	Onward	3.7
	Options Menu	3.4
	Overstrike	3.7

# Index

<b>P</b>	Paragraph spell-checking	3.9
	Pathname	B.1
	Paths	B.1
	Personal Dictionary	3.6, 3.7
	Physical disk I/O error	A.1
	Pinpoint Desktop Accessory Menu	3.2
	Pinpoint RAM Enhancement Kit	2.11
	Pinpoint Spelling Checker Menu	3.6
	PINPOINTPROFILE	2.3, 2.9
	PP.SPELL	2.9
	PP.INSTALL	2.9
	ProDOS Copy Routines	2.2
	ProDOS Pathnames	B.1
<b>Q</b>	Quitting the Pinpoint installation program	2.3
<b>R</b>	RAM	2.11
	RAM drive	1.3, 2.11
	RAM Enhancement Kit	2.11
	Re-enable all the desktop accessories	3.4
	Re-install Pinpoint on AppleWorks	2.10
	Recommended hardware	1.3
	Recommended software	1.3
	Removing words from the personal dictionary	C.1
	Running Spelling Checker installation program	2.3
<b>S</b>	Set default options screen	2.6
	Set up for extended RAM use	2.11
	Setting a standard dictionary location	2.7
	Setting a standard location for your accessories	2.3
	Slashes	B.1
	Software requirements	1.3
	Solid Apple-M	3.3
	Solid Apple-P	3.2-3.5, 3.8-3.10
	Specifying your AppleWorks Version	2.5
	Spell-checking summary	2.6, 3.5
	Spell-checking a data base field	3.8
	Spell-checking a document	3.9
	Spell-checking a paragraph	3.9
	Spell-checking a spreadsheet cell	3.7
	Spell-checking a word	3.5
	Spelling Checker default options	2.6, 3.5
	Spelling Checker error messages	A.1
	Spelling Checker installation menu	2.4
	Spelling Checker installation program	2.3

# Index

	Spelling Checker mode	2.7, 3.3
	Spelling Checker sounds	2.6, 3.1, 3.4, 3.5
	Spreadsheet cell	3.7
	Standard location of desktop accessories	2.3
	Standard location of dictionary files	2.7
	Storage	1.1
	Suggested Alternative words	3.7
	Summary	2.6, 3.5
<b>T</b>	Teachers	2.5, 2.6
	Toggle	2.7, 3.4, 3.5
	Two floppy disk drives	3.2
<b>U</b>	Unable to install Spelling Checker	A.1
	UniDisk 3.5	1.3
	Unlocked files	A.1
	Uploading files to RAM	2.11
	Using Spelling Checker	3.1
<b>V</b>	Video	1.2
	Volume not mounted	A.1
	Volume switched	A.1
<b>W</b>	Word Count	2.6, 3.5
	Write-protection	2.2
	Write-enabled	2.2, A.1
	Write-notches	2.2
	Write-protected disks	2.2



*Pinpoint Publishing  
5901 Christie Ave.  
Emeryville, CA 94608  
(415) 654-3050  
Telex 245-8579 MCI  
CompuServe 76244,123*

*P.O. Box 13323  
Oakland, CA  
94661-0323*

