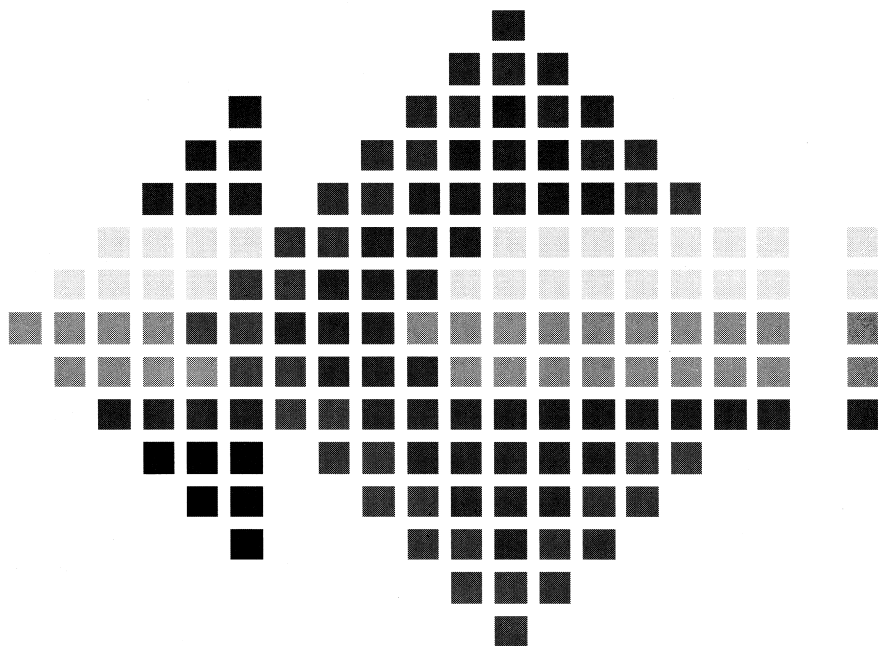


TransProg III



Seven Hills
SOFTWARE

TransProg III

Congratulations on your purchase of TransProg III! Be sure to complete and return the postage-paid registration card so we can notify you as new versions of this program become available.

TransProg III is a time-saving program launcher. Instead of quitting to the Finder each time you want to start a different application, just select the application from the TransProg III menu. Your current program is automatically "quit" and the application you selected is immediately launched. Special slot settings can even be established before launching an application.

In addition you can set hotkeys for startup applications...when the startup thermometer screen appears you can press a letter you've chosen and have an application launched immediately...bypassing your usual Start application!

Our goal was to make TransProg III a very useful productivity tool and to make it valuable to you personally. By making a quality program available at a reasonable price and by not copy-protecting the disk, we think we have succeeded. We hope that you support our efforts and encourage future updates and products by not allowing your family or friends to copy TransProg III. To borrow a phrase, "Just say no."

This manual and the software (computer program) described in it are copyrighted with all rights reserved. No part of the TransProg III software or documentation may be reproduced, stored in a retrieval system, or transmitted, in any form or by any means, mechanical, photocopying, recording or otherwise, without the prior written permission of Seven Hills Software Corporation.

Apple, IIGS, GS and GS/OS are trademarks of Apple Computer, Inc.

TransProg III © 1992 Seven Hills Software and BrainStorm Software.

TransProg III is a trademark of Seven Hills Software Corporation.

All rights reserved. Printed in the U.S.A.

Thanks To...

François Ubrich for the first versions of TransProg. **Etienne Pettitjean**, **Louis van Proosdij Duport**, and the rest of **BrainStorm** for writing this fantastic program. **All of our user group "Partners"** for telling people about our products. **And you**, for supporting our IGS publishing efforts!

Limited Warranty

SEVEN HILLS SOFTWARE CORPORATION'S LICENSOR(S) MAKES NO WARRANTIES, EXPRESS OR IMPLIED, INCLUDING WITHOUT LIMITATION THE IMPLIED WARRANTIES OF MERCHANTABILITY AND FITNESS FOR A PARTICULAR PURPOSE, REGARDING THE SOFTWARE. SEVEN HILLS SOFTWARE CORPORATION'S LICENSOR(S) DOES NOT WARRANT, GUARANTEE OR MAKE ANY REPRESENTATIONS REGARDING THE USE OR THE RESULTS OF THE USE OF THE SOFTWARE IN TERMS OF ITS CORRECTNESS, ACCURACY, RELIABILITY, CURRENTNESS OR OTHERWISE. THE ENTIRE RISK AS TO THE RESULTS AND PERFORMANCE OF THE SOFTWARE IS ASSUMED BY YOU. THE EXCLUSION OF IMPLIED WARRANTIES IS NOT PERMITTED BY SOME STATES. THE ABOVE EXCLUSION MAY NOT APPLY TO YOU.

IN NO EVENT WILL SEVEN HILLS SOFTWARE CORPORATION'S LICENSOR(S), AND THEIR DIRECTORS, OFFICERS, EMPLOYEES OR AGENTS BE LIABLE TO YOU FOR ANY CONSEQUENTIAL, INCIDENTAL OR INDIRECT DAMAGES (INCLUDING DAMAGES FOR LOSS OF BUSINESS INFORMATION, AND THE LIKE) ARISING OUT OF THE USE OR INABILITY TO USE THE SOFTWARE EVEN IF SEVEN HILLS SOFTWARE CORPORATION'S LICENSOR HAS BEEN ADVISED OF THE POSSIBILITY OF SUCH DAMAGES. BECAUSE SOME STATES DO NOT ALLOW THE EXCLUSION OR LIMITATION OF LIABILITY FOR CONSEQUENTIAL OR INCIDENTAL DAMAGES, THE ABOVE LIMITATIONS MAY NOT APPLY TO YOU. SEVEN HILLS SOFTWARE CORPORATION'S LICENSOR'S LIABILITY TO YOU FOR ACTUAL DAMAGES FROM ANY CAUSE WHATSOEVER, AND REGARDLESS OF THE FORM OF THE ACTION (WHETHER IN CONTRACT, TORT (INCLUDING NEGLIGENCE), PRODUCT LIABILITY OR OTHERWISE), WILL BE LIMITED TO \$50.

IN NO EVENT WILL SEVEN HILLS SOFTWARE CORPORATION, ITS DIRECTORS, OFFICERS, EMPLOYEES OR AGENTS BE LIABLE TO YOU FOR ANY CONSEQUENTIAL, INCIDENTAL OR INDIRECT DAMAGES (INCLUDING DAMAGES FOR LOSS OF BUSINESS INFORMATION, AND THE LIKE) ARISING OUT OF THE USE OR INABILITY TO USE THE SOFTWARE EVEN IF SEVEN HILLS SOFTWARE CORPORATION HAS BEEN ADVISED OF THE POSSIBILITY OF SUCH DAMAGES. BECAUSE SOME STATES DO NOT ALLOW THE EXCLUSION OR LIMITATION OF LIABILITY FOR CONSEQUENTIAL OR INCIDENTAL DAMAGES, THE ABOVE LIMITATIONS MAY NOT APPLY TO YOU. SEVEN HILLS SOFTWARE CORPORATION'S LIABILITY TO YOU FOR ACTUAL DAMAGES FROM ANY CAUSE WHATSOEVER, AND REGARDLESS OF THE FORM OF THE ACTION (WHETHER IN CONTRACT, TORT (INCLUDING NEGLIGENCE), PRODUCT LIABILITY OR OTHERWISE), WILL BE LIMITED TO \$50.

About Seven Hills Software

No Copy Protection

We don't believe in copy protection—all it does is impair the honest user's ability to use software to its fullest. We strive to provide high quality products at reasonable prices. We hope you will support our efforts by not allowing your family or friends to copy this software.

Postage-Paid Registration

Be sure to complete and return the postage-paid registration card so we can notify you as new versions of this program become available. Updates are always reasonably priced.

Questions and Comments

We always welcome feedback—if you have any questions, comments, or suggestions for improving this product, please let us know! In addition, we would like to hear your ideas for new programs.

Contacting Us

For orders and product information call (904) 575-0566 from 9 a.m. to 5 p.m. ET, Monday-Friday.

For technical questions about a specific product call (904) 576-9415 from 11 a.m. to 5 p.m. ET, Monday-Friday.

Contact us electronically for fastest written communication:

America Online, AppleLink, GEnie: SevenHills

CompuServe: 75300,1743

FAX: (904) 575-2015

To contact us the "old-fashioned way," write to:

Seven Hills Software
2310 Oxford Road
Tallahassee, FL 32304-3930

Notes

Table of Contents

Getting Started

Things You Need To Know	3
Installing TransProg III	4
Activating TransProg III	5
Inactivating TransProg III	5
Removing TransProg III	5
Guided Tour	6
Viewing TransProg III's Options	6
Using Hierarchic Menus	7
Adding A Menu Item	10
Launching An Item	11
Where To Go From Here	12

Reference

Quit Application	15
TransProg III	16
Menu Configuration	16
Editing Menu Items	16
Adding Menu Items	18
Removing Menu Items	23
Rearranging Menu Items	23
Thermo Configuration	24
Startup Application	24
Password	26
Preferences	27
About TransProg III	29
Launch Other	30

Index

Notes

Getting Started

We know you are anxious to start using TransProg III, but please read this section first because it leads you through several important steps which you need to do only once:

- Learning conventions and terminology
- Installing TransProg III onto your startup disk

After this section is the *Reference* section which covers every aspect of TransProg III.

Notes

Things You Need To Know

Requirements

To use TransProg III you need:

- An Apple IIGS
- A startup disk with System Software 5.0.4 or later.
- One 3.5" disk drive
- IIGS-specific programs that work with System Software 5.0.4 or later (e.g. AppleWorks GS, GraphicWriter III, Platinum Paint, etc.).

Keys on Your Keyboard

Keys on the keyboard are referred to by the name printed on them (*Delete*, *Option*, *A*, etc.). The Command key is shown as ⌘.

Steps

Steps you should follow are indented and numbered. For example:

- ① Use TransProg III.
- ② Increase your productivity.

Installing TransProg III

Installing TransProg III is easy...just follow these steps:

- ① Start up your Apple IIGS using the startup disk that you normally use (either a 3.5" floppy disk, or a hard disk drive, which contains System Software 5.0.4 or later).

When you reach the point where you can launch an application,

- ② Insert the original "TransProg III" disk into a 3.5" disk drive.
- ③ Launch the "Install" program.
- ④ When you are asked to do so, type your organization name (optional) and your full name, then click the Personalize button. The original TransProg III disk must *not* be write-protected (you should *not* be able to see through the hole in the upper-right corner of the disk).

Soon Apple's Installer window is displayed. The scroll box on the left side of the window contains the "scripts" that can be used to install TransProg III.

- ⑤ The "TransProg III Installation" script is already highlighted, so just click the Install button and TransProg III and its icons are copied to the disk that was used to start the computer.¹
- ⑥ After TransProg III is installed successfully, click the Quit button to quit Apple's Installer.
- ⑦ Click the Restart System button to restart the computer.
- ⑧ Eject the original TransProg III disk and store it in a safe place.

¹ In addition to installing "TP.III.Icons" into your Icons folder, these three files are installed into the System.Setup folder: TransProg.III, TP.III.Rez, and Hierarchic. Hierarchic provides hierarchic menu capability; it is required by TransProg III, and may be required by other programs from Seven Hills Software and/or BrainStorm Software.

Activating TransProg III

After installation, TransProg III is located in the System:System.Setup folder on your startup disk. Normally TransProg III will be activated automatically whenever you start your Apple IIGS (an icon appears on the startup screen when it is loaded). Because you restarted the system after installing TransProg III, it has been activated and is ready to use.

NOTE: If TransProg III cannot load for some reason, an X will appear on top of the TransProg III icon when the IIGS is started.

Inactivating TransProg III

You can prevent TransProg III from loading at startup time by holding down the Option key until after the TransProg III icon appears.

To turn off TransProg III for a longer time you can inactivate the TransProg III icon in the Finder. In the Finder, find the "TransProg.III" icon (in the *:System:System.Setup folder) and click once to select it. Press ⌘I to display information about this icon. Click the "Inactive" checkbox, then close the window.

If TransProg III is already loaded, it will stay active until the next time you start the computer. After that it won't be loaded until you repeat the steps above, this time unchecking the "Inactive" box.

Removing TransProg III

If you want to completely remove TransProg III, delete the following files from your startup disk: TransProg.III, TP.III.Rez, and Hierarchic² (all in the System:System.Setup folder), TP.III.Menu and TP.III.Thermo (in the System:Preferences folder), and TP.III.Icons (in the Icons folder). Also, please let us know why you're not using TransProg III.

² Unless you have another application that uses hierarchic menus.

Guided Tour

TransProg III can show off only in IIGS-specific “desktop” applications, such as AppleWorks GS, the Finder, GraphicWriter III, Platinum Paint, ShrinkIt-GS, SuperConvert and so on.

- ① If the startup program is not a IIGS-specific “desktop” (for example, if you are using ProSel-16), then launch such an application.

When a IIGS-specific “desktop” application is running, its menu bar will contain a new menu choice at the far right:

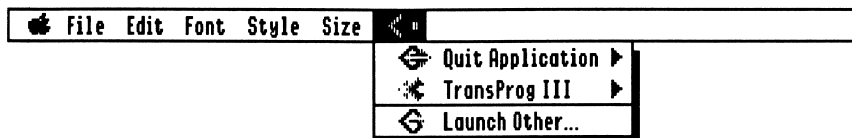


NOTE: TransProg III works fine with System 5.0.4, but throughout this manual the example displays are from System 6. The displays using System 5.0.4 may not be exactly like the displays in this manual. Also, the displays will vary depending upon which application you are using (most examples are using the “Finder” and “Teach” applications that are provided with System 6).

Viewing TransProg III's Options

To view TransProg III's options:

- ① Position the mouse pointer over the TransProg III icon in the menu bar, then hold down the mouse button. The following options will appear:



Using the TransProg III menu is just like using the menus you are familiar with. For example, to choose an option you drag the mouse down to highlight the option, then release the mouse button when your choice is highlighted.

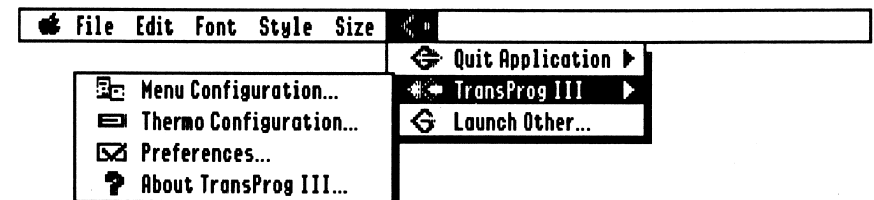
However, there is an important difference (besides the splash of color): Several of TransProg III's menus are “hierarchical” (a fancy way to say that a “sub-menu” of choices will appear when you highlight a main menu item). A menu item has a sub-menu if it has a right arrow icon. In the example above, the Quit Application and TransProg III menu items have sub-menus.

Using Hierarchic Menus

NOTE: If you have another Seven Hills Software product that uses hierarchic menus then you have already customized the delays to your liking and are already familiar with using hierarchic menus. You may skip directly to the Reference section.

Using a hierarchic menu is similar to using a regular menu: You just highlight the option you want. Here's how:

- ① If the TransProg III menu is not still displayed, position the mouse pointer over the TransProg III icon, then hold down the mouse button.
- ② Drag the mouse down to highlight the TransProg III menu item, and this sub-menu appears:



- ③ With the TransProg III menu item still highlighted, drag the mouse directly to the left to highlight the first item on the sub-menu (do not drag up or down off the TransProg III menu item). *NOTE: Soon we'll show you how to tell TransProg III to let you drag less precisely.*
- ④ Once an item on the sub-menu is highlighted, drag down to highlight the About TransProg III item. When the About TransProg III item is highlighted, release the mouse button.

If you're in a 640 mode application you will see a dialog box similar to the following:



When you are ready to proceed, click the mouse button and a second dialog box with “credits” appears. Click the mouse button again and you’ll see that TransProg III is personalized for you! Click once more and you’ll be returned to the application you were using.

Changing Delays

When you were trying to select About TransProg III, you may have noticed that the sub-menu disappeared if you moved the mouse off the main menu item before a sub-menu item was highlighted. On your way to choose the main TransProg III menu item you may have also noticed that the Quit Application sub-menu appeared.

There are two settings that can be adjusted for hierarchic menus: An “initial delay” and a “drag delay.” The initial delay determines how soon a sub-menu will appear, and the drag delay determines how long the sub-menu will stay open.

To change these settings:

- ① Hold down the ⌘ and Control keys. While still holding down those two keys, press the Escape key. The graphic screen disappears and the Classic Desk Accessory menu appears.
- ② Press the Down Arrow to highlight the “Hierarchic Settings” option, then press Return. This opens the “Hierarchic Settings” classic (text-based) desk accessory.

When the Hierarchic program is first installed, each delay is set to “no delay.” However, it is easier to choose sub-menu items if there is a delay for each item. Delays are specified in “60ths of a second.” For example, 1/2 second is 30/60ths of a second; 1 second is 60/60ths; 2-1/2 seconds is 150/60ths and so on. The longest delay that can be set is 254/60ths (slightly over 4 seconds).

To increase each delay:

- ③ The Drag Delay option is already highlighted. Hold down the *Left* Arrow until the number is 240/60ths (four seconds).
- ④ Press the Down Arrow to highlight the Initial Delay option.
- ⑤ Hold down the *Right* Arrow until the number is 60/60ths (one second). *TIP: The values can be increased or decreased 10 steps at a time by holding down the ⌘ key when you press the Right or Left Arrow key.*
- ⑥ Press Escape to highlight the Quit option and press Return to go back to the Classic Desk Accessory menu. Press Escape to highlight the Quit option and press Return to go back to the graphic screen.

To see the effect that the delay has:

- ⑦ Pull down the TransProg III menu and drag down to highlight the TransProg III item. Note that the Quit Application menu item does not pop open when you drag over it, and note that the TransProg III sub-menu appears only after the main item is highlighted for one second.
- ⑧ With the TransProg III item highlighted, drag *down and to the left/right*, making a beeline for the About TransProg III menu item. Even though you drag off the main menu, the sub-menu does not disappear immediately.

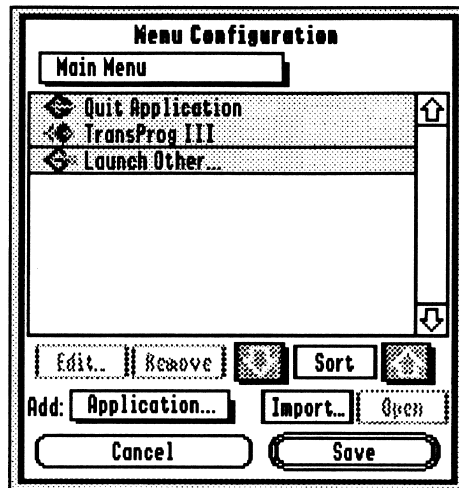
As you become more familiar with using hierarchical menus, you will probably want to reduce the delays significantly (we use a drag delay of 120/60ths and an initial delay of 15/60ths). *NOTE: Even with a long drag delay, fast vertical mouse motion will cause the sub-menu to disappear before the specified delay. This is intentional to avoid a long delay if you accidentally highlight the wrong menu.*

Play Time

Practice choosing About TransProg III until you get the feel for using hierarchical menus...soon you will be addicted!

Adding A Menu Item

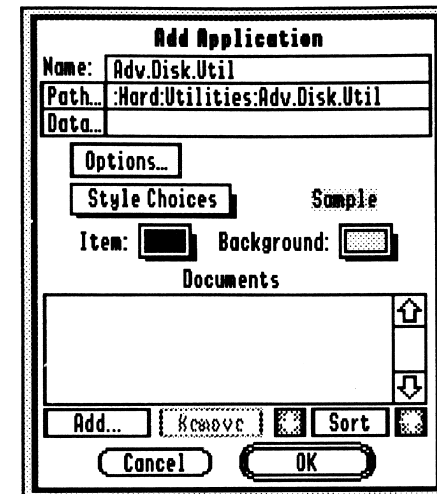
To really use TransProg III you need to add some applications to the TransProg III menu. To do this, choose Menu Configuration from the TransProg III sub-menu.



The Menu Configuration dialog box

Near the bottom of the dialog box is an “Add” popup. Select Add Application and you are asked to select the application you want to add. Find and open some application (e.g. AppleWorks GS, GraphicWriter III, Teach, etc.).

After selecting the application you can set other options.



Adding/Editing an Application

The Name field contains the name of the application as it will appear on the menu. If you selected an application like “Adv.Disk.Util” you might want to edit the name to be more clear (e.g. “Advanced Disk Utility”).

Edit the name, but leave the other fields alone for now. When you’re ready to proceed, click OK and the application you selected will appear at the bottom of the list.

Add a few more applications if you like, then click the Save button to save the menu.

Launching An Item

Launching an application is easy: Just pull down the TransProg III menu and select the item you want to launch. The program you are currently using will be “quit,” then the new application will be launched.

When the new application appears, select a different one to see how TransProg III goes directly to the next application.

When you’re done experimenting, choose Quit Application and you’ll return to the first application

Where To Go From Here

This Guided Tour was a very brief introduction to TransProg III. Read the Reference section to learn about all the other features that will make using your IIGS even easier!

Reference

The *Reference* section describes all the features found in TransProg III—use it to learn about a specific feature.

A particular topic or command also can be found in the Table of Contents or Index.

Notes

Quit Application

Choose Quit Application to quit the current application. This is just like choosing Quit from the File menu.

In addition to quitting the application, you can highlight one of the following choices on the sub-menu:

And Shut Down: After quitting the current application, TransProg III shuts down your IIGS just as if you selected "Special/Shut Down" from the Finder. This lets you quickly shut down the computer without having to return to the launching application.

And Cold Restart: After quitting the current application, TransProg III restarts the IIGS just as if you first turned the computer on. This means memory is erased, any RAM disks are lost, and so on. Be careful if you choose this option, as no confirmation is given.

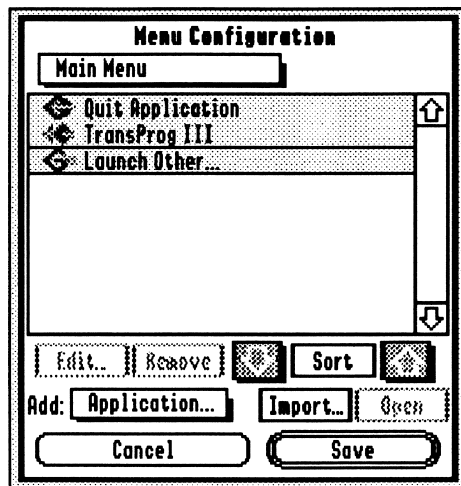
And Warm Restart: After quitting the current application, TransProg III restarts the IIGS just as if you selected "Special/Restart" in the Finder. This means that memory is not erased and RAM disks remain intact.

TransProg III

The TransProg III menu item contains the options you use to set up the TransProg III menu, startup applications, and preferences. It also contains the About TransProg III menu item.

Menu Configuration

Choose Menu Configuration to add new menu items to the TransProg III menu, and to change the order and appearance of those items.



The Menu Configuration dialog box

After making changes to any part of the Menu Configuration dialog box (including changes in supplemental dialog boxes) you must click the Save button to keep the changes. Clicking Cancel ignores all changes and reverts the entire menu to the way it was when you first chose the Menu Configuration option.

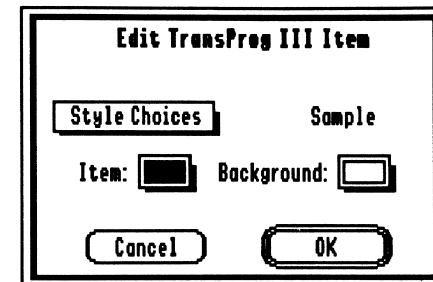
Editing Menu Items

To edit any TransProg III menu item, highlight the item in the list then click the Edit button. As a shortcut you can also double-click the item, as long as it is not a Group item (double-clicking a group item opens the group). *NOTE: Most buttons in TransProg III also have a keyboard shortcut (for example, pressing ⌘E is the same as clicking the Edit button).*

Different editing options appear, depending upon what the item is.

Quit Application, TransProg III, Launch Other

You can change the position and appearance of the main TransProg III menu items (Quit Application, TransProg III, and Launch Other). Editing any of these items presents the following dialog box:



Editing a TransProg III Item

The Style Choices, Item and Background options affect how this item will be displayed in the menu. As you make new choices, the “Sample” display changes to reflect the current settings.

The Style Choices popup menu lets you change the style of the menu item. By default items are displayed in Plain text. However, any combination of **Bold**, *Italic*, **Outline**, or **Shadow** styles can be used.

NOTE: Underline is not possible with the Shaston.8 font, so it is not presented as an option.

The Style Choices popup also has a “Divider” option. When that option is checked a divider bar is displayed at the bottom of the menu item.

The Item and Background choices let you select the colors in which to display the menu item. By default all items are displayed in black on a yellow background.

When you are done editing the item, click OK to save the changes, or click Cancel to keep the original settings.

Applications, Groups, and Dividers

These editing options are discussed in the next section (“Adding Menu Items”).

Adding Menu Items

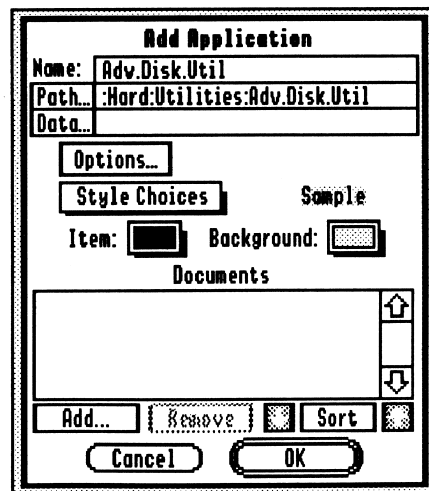
There are three kinds of items that can be added to the TransProg III menu: Applications, Groups, and Dividers. You can add as many of these items to the menu as you desire—the number is limited only by how much memory your computer has.

NOTE: If you owned the shareware version of TransProg you can click the Import button to import your existing menu as a starting point.

To add an item, select the kind of item you want from the “Add” popup menu.

Application

After choosing Add Application you are asked to select the application you want to add. Highlight the application then click Open. An editing dialog box appears, pre-filled with some information about the application you just selected. *NOTE: If you'd rather skip the application selection dialog box and enter all the information by hand, hold down the Option key when you choose Add Application.*



Adding/Editing an Application

The first three boxes are the most important:

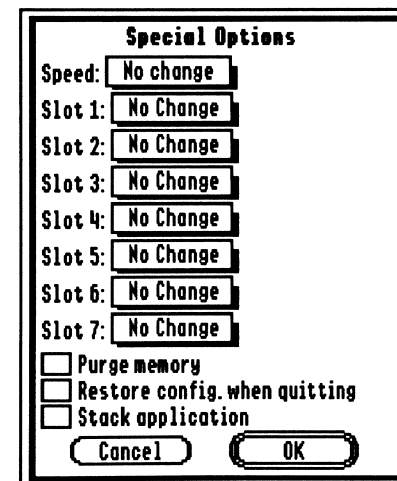
Name: This is the name as it will appear in the TransProg III menu, which can be more descriptive than the application name as it appears on disk. For example, an application might be named “Adv.Disk.Util” on disk, but the name that appears in the TransProg III menu could be “Advanced Disk Utility.”

Path: This is the complete pathname of the application that should be run when this menu item is chosen from the TransProg III menu. You can either type the full pathname (use a colon (:) before the volume name and to separate each folder name), or you can click the Path button to select the application using the standard file dialog box.

Data: If you launch an application and open a document, the standard file dialog box usually displays the files in the same folder as the application you just launched. By specifying a Data folder, TransProg III will set the prefix so that folder will be displayed when you first open a document. *NOTE: Some applications set their own prefix or otherwise ignore or override the data folder that TransProg III sets, so this feature might not work for all applications.*

Options

Before launching an application TransProg III can set your system to a certain configuration. Clicking the Options button lets you set the following options:



Special Options for an application

Speed: This item appears only if you have a TransWarp or Zip Chip accelerator installed in your computer. It lets you set various options, depending upon which accelerator you have.

Slot 1-7: This item lets you change slot configurations when launching an application. Choosing “Built-In” configures the slot for the built-in option (e.g. the printer port, modem port, etc.). Choosing “Your Card” configures the slot to use the card that’s plugged into the slot. Choosing “No Change” means the current port setting will not be affected.

Normally after making a slot change (e.g. switching between “Printer Port” and “Your Card”) you would need to restart the computer. With TransProg III you don’t have to—TransProg III directly forces the speed and slot settings via a “softswitch” so you do not have to restart.

For example, imagine you have a Sonic Blaster card in slot 1 but also have a printer connected to the printer port on the back of the computer. By configuring TransProg III to set slot 1 to “Built-In” for most of your software, and have it set slot 1 to “Your Card” for the Sonic Blaster application, you will be able to print from all your applications and digitize a sound with the Sonic Blaster software...without being forced to manually change the setting and restart the computer!

There are two limitations with the method TransProg III uses to establish the desired slot settings. The first is that the changes are not seen by the Control Panel (i.e. you specify “Slot 1–Your Card” but the Control Panel will still say “Printer Port”). The second is that the method is not supported by Apple, meaning that future revisions of the system software might cause TransProg III to fail in its attempt to change a slot setting.

However, Apple currently has no supported method to make slot setting changes “on-the-fly,” and we felt having these limitations was better than not having the ability to automatically establish a desired slot configuration. And, of course, if a supported method is ever provided, TransProg III will be updated to use it.

WARNING: Normally you should not change slot settings for slot 3, slot 4, or any disk devices because doing so will prevent the use of the 80 column text display, the mouse, and the disk drives.

Purge Memory: This option will purge memory before an application is launched by TransProg III. Normally you won’t need to specify this option, but if you find an application works better when the system is first started and worse if you run it after several other applications, then the Purge Memory option might help.

Restore Configuration When Quitting: If you launch an application with TransProg III and several slot settings were specified, you might want to check this option. Doing so will restore the previous configuration when you quit the application.

For example, if you set TransProg III to force Slot 1 to the Your Card and the TransWarp speed to Slow before running an old ProDOS 8 game, check this option and the Slot and TransWarp settings will be restored to the state they were in before you launched the game.

Stack Application: This option “stacks” the application when it is quit. For example, imagine you are in the Finder and you start GraphicWriter III from the TransProg III menu. While in GraphicWriter III you launch Platinum Paint. When you quit Platinum Paint the Finder normally would reappear. However, by specifying “Stack Application” for GraphicWriter III, you will be returned to GraphicWriter III when you quit Platinum Paint.

Although this option may be useful in some situations, it can get confusing as to which program will appear when you Quit. Also, stacking an application will not establish any special settings for that application. For these reasons it is usually better to just select the application you want to launch from the TransProg III menu.

Style Choices

The Style Choices, Item and Background options affect how this item will be displayed in the menu. The “Sample” display reflects the current settings, and changes as you make new choices. See the “Editing Menu Items” section above for more information about these options.

Documents

Double-clicking a document in the Finder will launch an application and tell that application to open the document. If the application is designed to do so, it will get the message and open the document. TransProg III can also launch a document.

Under the Document list box, click the Add button to add one or more documents to this application. In the dialog box where you select the files to add, you’ll probably notice that all files are visible. This happens because TransProg III does not know what kind of documents the particular application can open, so it shows you all documents. *NOTE: In 320 screen mode there is no “Accept” button visible; press Enter to accept the items you’ve highlighted.*

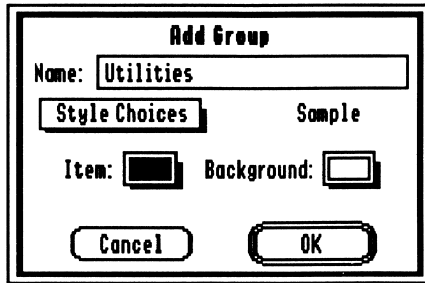
You can rearrange or remove documents by using the Remove, Up, Down, and Sort buttons.

After adding documents to an application and saving the menu, the application’s menu entry will have a sub-menu attached to it. Selecting a document from a sub-menu will launch the application and tell it to open the document. If you hold down the ⌘ key when choosing a document, TransProg III will launch the application and tell it to print the document.

If the application launches but the document you selected is not opened or printed, it means either the application does not support opening/printing a document from the Finder, or that the document you selected is not one that the application can open/print.

Group

After choosing Add Group you are asked to name the group and specify how the group should be displayed in the menu. For more information about the style choices, see the “Editing Menu Items” section above.



Adding/Editing a Group dialog box

Groups are useful to organize groups of related applications. For example, you could create a “Telecommunications” group that contained America Online, ShrinkIt-GS, and Spectrum. You could create a “Desktop Publishing” group that contained GraphicWriter III, Platinum Paint, and Teach.

To open a group highlight it and click Open (or double-click the group). When you open a group its name is added to the popup menu at the top of the Menu Configuration dialog box. To close a group, choose a group from the popup menu, or press Escape to return to the previous level.

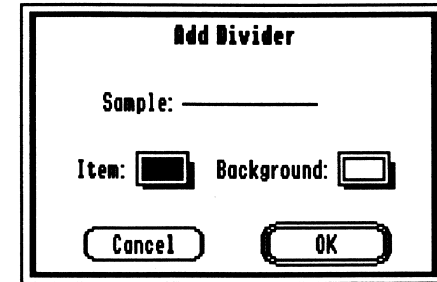
Note that you can include the same application in more than one group. For example, ShrinkIt-GS could be placed into a “Telecommunications” group and a “Utilities” group. And each copy of ShrinkIt-GS could have completely different options (for example, the copy in the Telecommunications group might want to specify a certain data path, but the copy in the Utilities group might specify a different data path).

To make managing groups easier you can cut (⌘X), copy (⌘C), and paste (⌘V) menu items. For example, if you have already added Spectrum and ShrinkIt-GS on your main menu, you could create a Telecommunications group, highlight Spectrum and ShrinkIt-GS and press ⌘X to Cut those menu items. Open the new group then press ⌘V to paste the items into that group.

You can cut, copy, and paste applications, groups, and dividers; you cannot cut or copy the three TransProg III menu items (Quit Application, TransProg III and Launch Other).

Divider

After choosing Add Divider you can specify how the divider should be displayed in the menu.



Adding/Editing a Divider dialog box

A divider entry is different from the “Divider” style choice, in that the divider style choice simply draws a line at the bottom of the menu item with that style. A separate divider entry takes up a whole menu item of its own, so it adds even more space between items.

Removing Menu Items

To remove one or more menu items, highlight the items to remove and click the Remove button. The items are removed without warning; if you change your mind you can click the Cancel button. *NOTE: The three TransProg III menu items (Quit Application, TransProg III and Launch Other) cannot be removed.*

To highlight a range of items, hold down the Shift key when you click. To highlight or un-highlight a single item from a selection, hold down the ⌘ key when you click.

Rearranging Menu Items

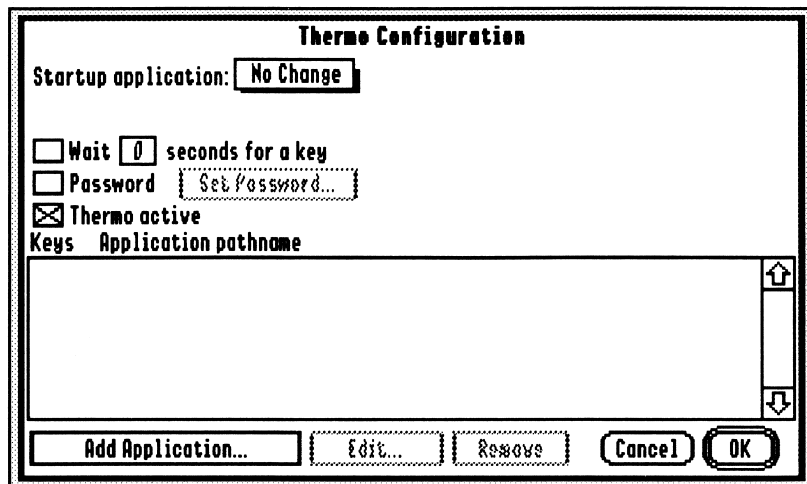
You can rearrange menu items into any order you desire.

Clicking the Sort button sorts the currently displayed list alphabetically. Sorting also moves the three TransProg III menu items (Quit Application, TransProg III and Launch Other), so you might only want to sort when a Group is open.

To move a single item up or down in the list, click on the item and click the Up or Down arrow. You can also press ⌘UpArrow or ⌘DownArrow on the keyboard.

Thermo Configuration

Choose Thermo Configuration to set options that apply when you are starting your computer. *NOTE: This option is not available in 320 mode.*



The Thermo Configuration dialog box

You can select any application to be your startup application, set a password to prevent someone from starting your system, and specify keys that will launch particular applications directly during the startup process.

After making changes to the Thermo Configuration dialog box you must click the OK button to keep the changes. Clicking Cancel ignores all changes.

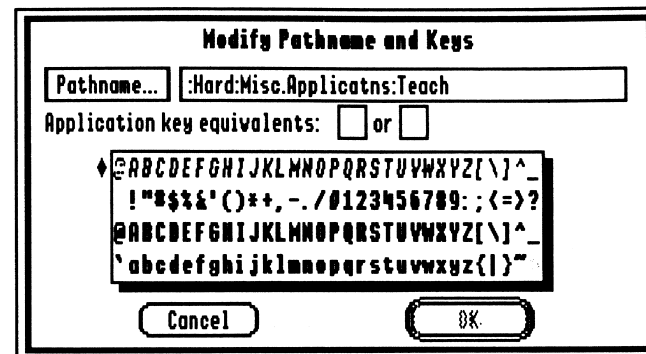
Startup Application

Normally the Finder is the startup application, but you can bypass the Finder and make another application the first one to run. There are two ways to change the startup application with TransProg III.

The first method is to select "Custom" from the Startup Application popup menu and select an application. An application chosen this way will be run automatically each time you start the system.

The second method is to create a keyboard entry for an application. To start one of the applications directly you press its corresponding key during the startup process (wait until the thermometer screen appears). If you don't press a key then the usual startup application is launched.

To create an entry, click the Add Application button and select the application. After selecting the application you are shown a listing of available keys. *NOTE: If you select the wrong application click the Pathname button to select the correct application, or manually edit the pathname.*



Available Keys

Type the key you want to use to launch the application and it is entered into both edit boxes. For example, if you were adding GraphicWriter III you might want to use "G." By default when you press a key the uppercase letter is placed into the first box and the lowercase letter is placed into the second box. This lets you type either the uppercase or lowercase letter to start the application. However, you can edit the boxes to recognize only a single letter (e.g. enter "g" and "g" in both boxes).

The first row of keys is preceded by a diamond. This row indicates control keys. To enter a control key type a caret (^) into the first box, then type an uppercase letter or symbol into the second box.

NOTE: All three edit boxes must be filled in before the OK button becomes active.

Wait X Seconds For A Key

During the startup process, pressing a letter that corresponds to an application in the list will launch that application (if the "Thermo Active" option is checked). You must press the key *before* TransProg III is loaded or it will not be seen and the usual startup application will be run.

To give yourself more time to press a key, check the "Wait X Seconds For A Key" checkbox and enter a number into the box. You can have TransProg III wait up to 99 seconds for you to press a key. The usual startup application is run if you don't press a key before time runs out.

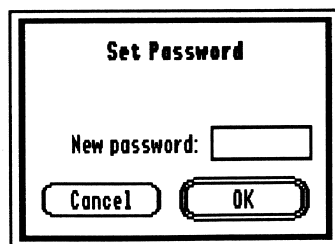
As soon as you press any key (whether or not there is a corresponding entry in the Thermo Configuration list), the startup process will continue. *NOTE: During the time that TransProg III is waiting for a key, the startup thermometer will continue filling even though nothing is actually loading.*

If you press a key that has an entry in the list, the message "Launching: Name" appears, and the TransProg III icon changes. *NOTE: If you press the wrong key, press Delete then press the correct key (or just press Delete if you want the usual startup application to appear).*

When you quit an application that was launched via a Thermo key, your usual startup application is launched.

Password

You can prevent people from starting your computer by specifying a password. To enter a password, check the Password checkbox, then click Set Password.



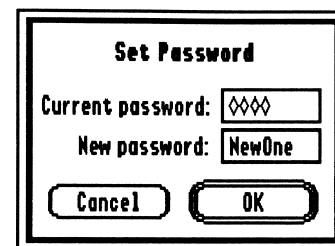
Entering a new password

Each time you start the system you will be asked to enter the password. If you enter the wrong password the system will be shut down. *NOTE: Case is important (password and Password are different).*

WARNING: This password protection is not sophisticated! All it does is interrupt the startup process to ask for a password. If someone is knowledgeable they can easily start up the system with a different disk and have full access to the data on the "protected" disk.

To turn password protection off, uncheck the Password checkbox. To turn password protection back on with the old password, check the Password checkbox.

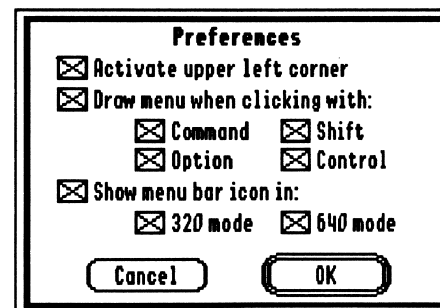
To change the stored password click Set Password. To change the password you must enter the current password and a new password. The OK button is dim until the current password is entered correctly.



Changing the password

Preferences

Choose Preferences to specify how you want to access TransProg III.



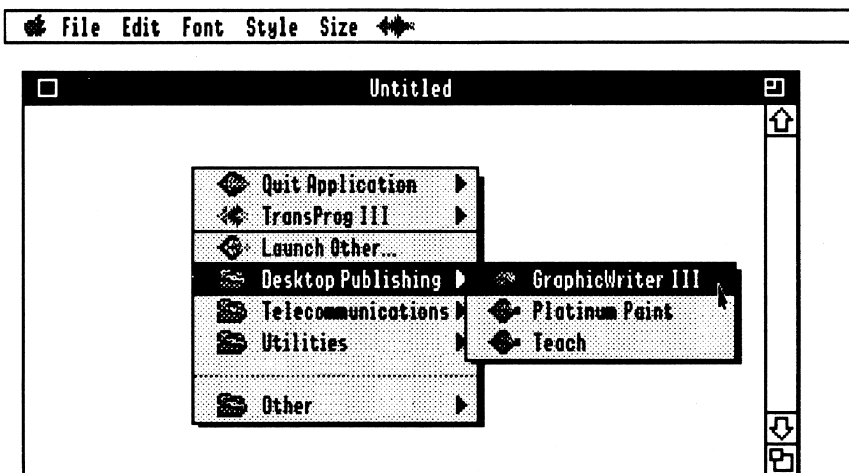
The Preferences dialog box

There are three ways to access TransProg III in desktop applications. At least one of the options must be selected in order for the OK button to be active.

Activate Upper Left Corner: When this box is checked, holding down the mouse at the upper-left corner of the screen will pop open the TransProg III menu.

Draw Menu When Clicking With: When this box is checked the Command, Option, Shift, and Control checkboxes become active. By holding down the modifier keys you check then holding the mouse button down, the TransProg III menu will appear where you click. *NOTE: If you don't specify any modifier keys the TransProg III menu will appear every time you click the mouse. If this happens, hold down the mouse button and select Preferences again to specify some modifier keys.*

This option lets you access the TransProg III menu wherever you happen to be:



The TransProg III menu popped open in the middle of the screen

Show Menu Bar Icon In: When this box is checked the 320 mode and 640 mode checkboxes become active. If you don't want the TransProg III icon to appear in the menu bar for a certain mode, uncheck the appropriate checkbox.

It is possible to create situations where you cannot access TransProg III at all. For example, uncheck all the options except "show menu bar icon in 320 mode" and you won't have access to TransProg III in any 640 mode application. And launching Platinum Paint (a 320 mode application) won't give you access because the TransProg III menu is off the screen.

To avoid this you should always have the 640 mode option checked, or be sure that at least one of the first two options is checked.

About TransProg III

Choose About TransProg III to view information about TransProg III.



The About TransProg III dialog box (not shown in 320 mode)

When you are ready to proceed click the mouse button and a second dialog box with "credits" appears. Click the mouse button again and you'll see that TransProg III is personalized for you! Click once more and the About dialog box disappears.

Launch Other

Choose Launch Other to launch applications that have not been added to TransProg III's menu. A "standard file" dialog box appears in which you can select an application to launch.

If you decide you'd like to add this application to TransProg III's main menu, click the Add to TransProg III menu checkbox.

After highlighting the application to launch, click the Open button and the chosen program will be started.

Index

This index attempts to reference all the topics you might look up. If you are looking for a particular topic and can't find it, please let us know so we can incorporate it in the next printing of the manual.

A

About TransProg III 29
Activate Upper Left Corner 27
Activating TransProg III 5
Adding Documents 21
Adding Menu Items 10, 18
Applications 17, 18

B

Background Color 17

C

Cold Restart 15
Color Choices 17
Copy 22
Cut 22

D

Data 19
Dividers 17, 23
Documents 21
Draw Menu When
Clicking With 28

E

Editing Menu Items 16

G

Getting Started Section 1
Groups 17, 22
Guided Tour 6

H

Hardware Requirements 3
Hierarchic Menus 7
Changing Delays 8

I

Inactivating TransProg III 5
Installer Program 4
Installing TransProg III 4
Instructions 3
Item Color 17

K

Keyboard 3
Keys 3

L

Launch Other 17, 30
Launching An Application 11
Launching Options 19
Loading TransProg III 5

M

Menu Configuration 16
Menu Items
 Adding 18
 Applications 18
 Dividers 23
 Groups 22
 Rearranging 23
 Removing 23

N

Name 18

O

Options
 Launching 19

P

Password 26
Paste 22
Path 19
Preferences 27
Purge Memory 20

Q

Quit Application 15, 17

R

Rearranging Menu Items 23
Removing Menu Items 23
Removing TransProg III 5
Requirements 3
Restart 15
Restore Configuration When
 Quitting 20

S

Show Menu Bar Icon 28
Shut Down 15
Slot 19
Speed 19
Stack Application 21
Startup Application 24
Steps 3
Style Choices 17, 21

T

Thermo Configuration 24
TransProg III Menu Item 16
TransProg III 17

W

Warm Restart 15

Notes