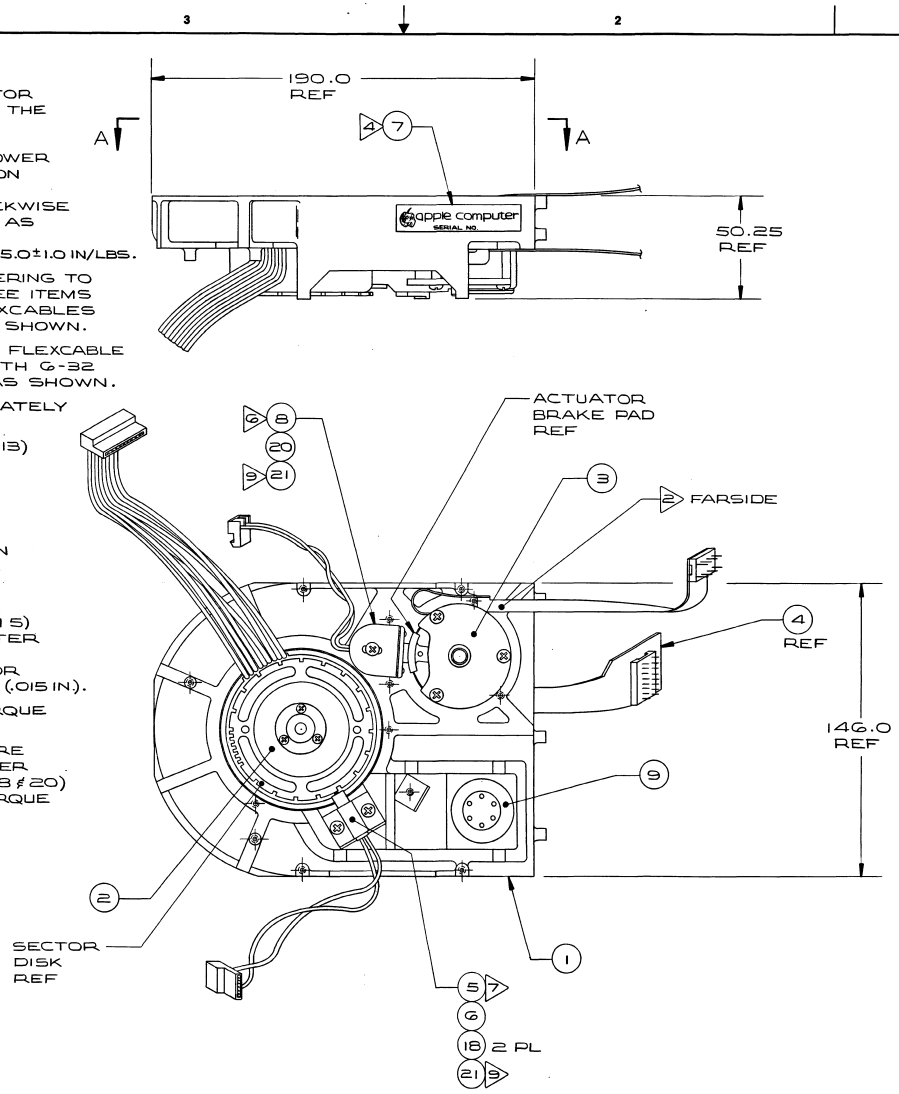


NOTE: UNLESS OTHERWISE SPECIFIED

1. ALIGN ARM ASSY (ITEM 4) TO ACTUATOR MOTOR ASSY (ITEM 3) BY FOLLOWING THE PROCEDURES LISTED BELOW:
 - A. ROTATE ARM ASSY CLOCKWISE (LOOKING AT VIEW A-A) UNTIL LOWER ARM CONTACTS 7.0 DIA BOSS ON CHASSIS.
 - B. ROTATE ACTUATOR SHAFT CLOCKWISE (LOOKING AT VIEW A-A) AS FAR AS POSSIBLE.
 - C. TIGHTEN G-32 SCREW ON ARM TO 15.0 ± 1.0 IN/LBS.
2. PRIOR TO ASSEMBLY, REMOVE COVERING TO EXPOSE ADHESIVE ON FLEXCABLES (SEE ITEMS 3 AND 4) IN LOCATIONS SHOWN. FLEXCABLES TO BE ROUTED APPROXIMATELY AS SHOWN.
3. AFTER ASSEMBLY, 3.81 DIA HOLE IN FLEXCABLE (SEE ITEM 4) TO BE CONCENTRIC WITH G-32 TAPPED HOLE IN CHASSIS (ITEM 1) AS SHOWN.
4. POSITION LABEL (ITEM 7) APPROXIMATELY AS SHOWN.
5. PRESS FIT ALIGNMENT PINS (ITEM 13) INTO 1.580 DIA HOLES IN CHASSIS (ITEM 1) TO INDICATED DIMENSION.
6. POSITION BRAKE ASSY (ITEM 8) SO THAT BRAKE HOUSING CENTER LINE IS RADIAL TO ACTUATOR SHAFT. AIR GAP BETWEEN NEOPRENE PAD ON BRAKE AND ACTUATOR BRAKE PAD TO BE .330 (.013 IN.) WHEN BRAKE IS ENERGIZED.
7. POSITION INDEX SENSOR ASSY (ITEM 5) SO THAT SENSOR HOUSING CENTER LINE IS RADIAL TO SPINDLE MOTOR SHAFT. AIR GAP BETWEEN SENSOR TIP AND SECTOR DISK TO BE .381 (.015 IN.).
8. UNLESS OTHERWISE SPECIFIED, TORQUE ALL SCREWS TO 10.0 IN/LBS.
9. AFTER BRAKE AND INDEX SENSOR ARE PROPERLY POSITIONED ON CHASSIS PER NOTES G & 7 AND SCREWS (ITEMS 18 & 20) ARE TORQUED IN PLACE, APPLY TORQUE SEAL (ITEM 21) TO SCREW HEADS TO PREVENT TAMPERING.



REV	ZONE	ECO#	REVISION	APP'D
A		PG19	INITIAL RELEASE (SK-W174-05)	RC1

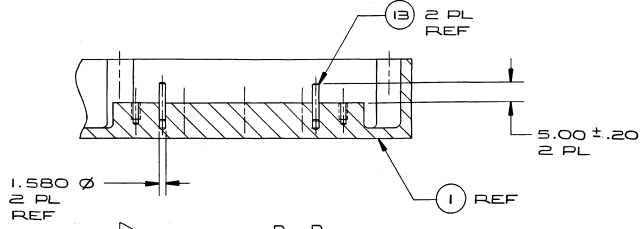
SEE SEPARATE BILL OF MATL: 677-5016

METRIC DIMENSIONS IN MILLIMETERS ANGLES IN DEGREES		apple computer inc NOTICE OF PROPRIETARY PROPERTY THE INFORMATION CONTAINED HEREIN IS THE PROPRIETARY PROPERTY OF APPLE COMPUTER, INC. THIS DOCUMENT IS TO BE CONTROLLED BY APPLE COMPUTER, INC. THIS DOCUMENT IS TO BE CONTAINED ONLY IN THE ORIGINAL OR IN A COPY MADE BY APPLE COMPUTER, INC. FOR THE ORIGINAL OR IN A COPY MADE BY APPLE COMPUTER, INC. FOR THE ORIGINAL OR IN A COPY MADE BY APPLE COMPUTER, INC. FOR THE ORIGINAL.	
MATERIAL	QTY	UNIT	TITLE
HEAD ASSEMBLY	1	PCB	SUBASSY HEAD / DISK WIDGET
RELATE	11	PCB	WIDGET
DATE	11/83	M. S. D.	REVISED NUMBER
FORM	FULL	D	677-5016-A

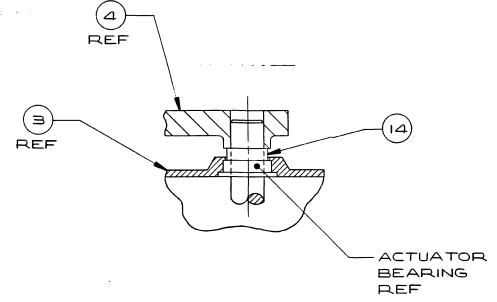
677-5016-A 1/2

NOTE: UNLESS OTHERWISE SPECIFIED

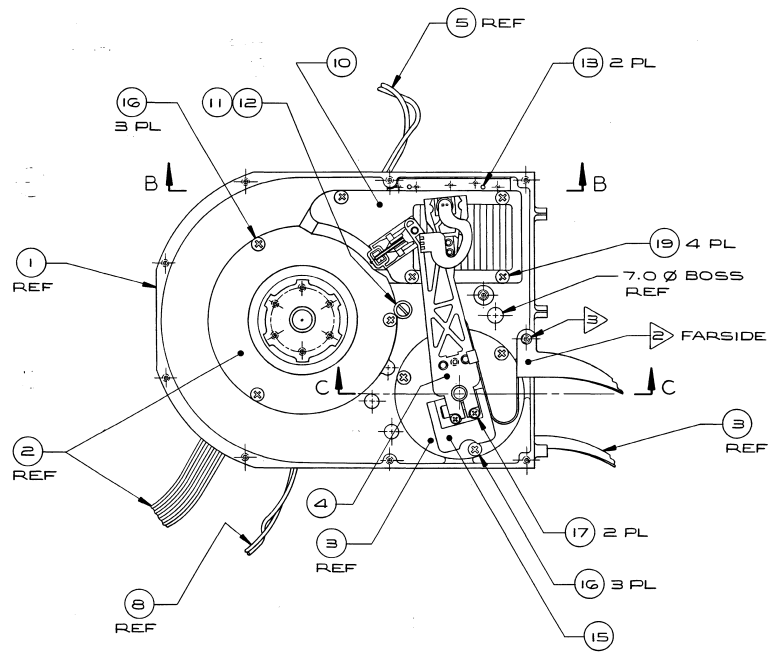
REV	ZONE	ECO #	REVISION	APPRO
			SEE SHEET 1	



SECTION B-B
SCALE: 2X



SECTION C-C
SCALE: 2X



VIEW A-A
SCALE: FULL

METRIC <small>DESIGNED TO THE MILLIMETER SYSTEM</small> ANGLES: DEGREES MINUTES SECONDS DIMENSIONS: MILLIMETERS			
NOTICE OF PROPRIETARY PROPERTY THE INFORMATION CONTAINED HEREIN IS THE PROPRIETARY PROPERTY OF APPLE COMPUTER, INC. THE FURNISHING OF THIS DOCUMENT IS IN CONFIDENCE AND IS NOT TO BE REPRODUCED OR COPIED IN ANY MANNER WITHOUT THE WRITTEN PERMISSION OF APPLE COMPUTER, INC.			
DESIGNED BY: ANDERSON DRAWN BY: [Signature] CHECKED BY: [Signature] RELEASE BY: [Signature]	DATE: 11/81 SCALE: 1:1 TITLE: SUBASSY, HEAD/DISK, WIDGET	DRAWING NUMBER: G77-5016-A SHEET: 2/2	NOTED: [Signature]

G77-5016-A-2/2