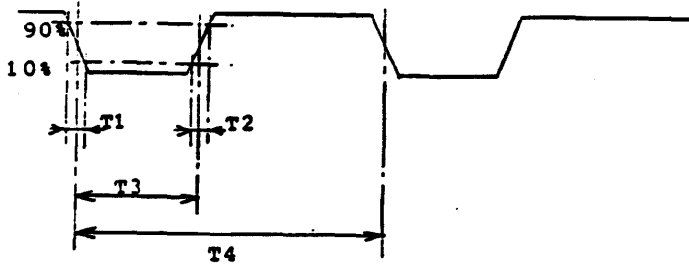


### 3.4.8 /PWM WAVEFORM



T1 : 50 ns  
T2 : 50 ns  
T3 : 10% to 90% of T4  
T4 : 25 us to 50 us

### 3.5 Power On and Power Off Requirements

#### 3.5.1 Data Protection

There shall be no damage to recorded data on the disk during either a power on or power off operation as long as the disk is not in the middle of a write when power is turned off.

#### 3.5.2 Power Supply Sequencing

No special power supply sequencing shall be required by the disk as long as both the +5 volt and +12 volt power supplies have a monotonic rise time of less than 100 milliseconds. That is there shall be no ringing on the supplies during turn on or turn off which causes them to rise above and then fall below their specified voltage. Some ringing is tolerable as long as it doesn't cause the voltage to exceed or fall below the specified limits (+/-5%).

At turn off, both supplies must fall monotonically to zero volts, however, there are no sequencing or timing requirements.

 **apple computer inc.**

SIZE  
A

DRAWING NUMBER

699-0285-A

SCALE:

SHEET 28 OF 39