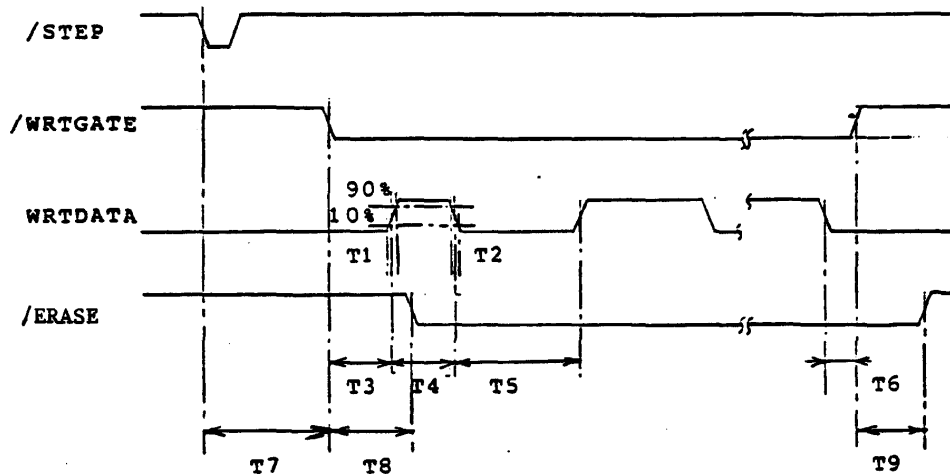


### 3.4.3 /WRTGATE, WRTDATA and /ERASE Timing



T1	:	100 ns Max
T2	:	100 ns Max
T3	:	1.8 us
T4	:	2 us +/- 0.05 us for 2 usec period*
	:	4 us +/- 0.05 us for 4 usec period*
	:	6 us +/- 0.05 us for 6 usec period*
T5	:	2 us +/- 0.05 us for 2 usec period*
	:	4 us +/- 0.05 us for 4 usec period*
	:	6 us +/- 0.05 us for 6 usec period*
T6	:	2us
T7	:	12 ms + 30 ms Min
T8	:	250 us +/- 6 us
T9	:	884 us +/- 5 us

\*These numbers will be different if the system clock frequency is different, however, since the disk controller controls both read and write frequency, no decrease in time margin is experienced due to this effect. For disks recorded on different systems to be interchangeable, the data density on the disk must be the same.

 **apple computer inc.**

SIZE  
A

DRAWING NUMBER  
699-0285-A

SCALE:

SHEET 25 OF 39