

WRITER'S CHOICE elite™

for the Apple® IIcs™

Full-Color Word Processing • Ease of Use
Graphics Integration Capability • Multiple Windows



Apple® IIcs

512K, RGB Monitor Required

1.25 MByte RAM Recommended

3.5" Disk

KD-945-56

ACTIVISION®

THIS IS ONE OF
THREE PROGRAMS IN
PAINT WRITE DRAW
NOT SOLD SEPARATELY
KD-945-78

Writers Choice *elite*[™]

Designed by Version Soft, Inc.

You choose the words, *Writer's Choice elite* does the work. Colorfully. Efficiently. Accurately. Whether you're writing a letter, drafting a memo or composing the great American novel, *Writer's Choice elite* can handle the assignment.

Easy to learn because it's easy to use. Pull-down menus, just as on the Macintosh.[™]

Don't just say it—picture it. Add pictures to your documents from *Paintworks Plus*, *Clip Art Gallery*, *Draw Plus* or other compatible graphics programs.

Color, color, color. Go beyond black words on a white screen. Use color highlighting for emphasis, for fun, or to help organize your thoughts while you write and edit.

Windows on your words. Work with up to 16 different documents – or passages in one document – on the screen at the same time.

Mouse power. All it takes is a touch of a button to –

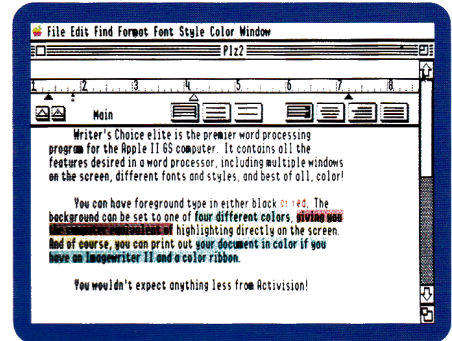
- Set margins, spacing, tabs and decimal tabs; search for key words and phrases; and select fonts, type styles and sizes.
- Cut and Paste. Move text around in the same document or from one document to another.
- Copy. Avoid tedious retyping of words, sentences, paragraphs and more.
- Undo. For those times when you change your mind about the last time you changed your mind.

What you see is what you print. Every document prints out just the way it appears on the screen. So there are no surprises, just lots of options –

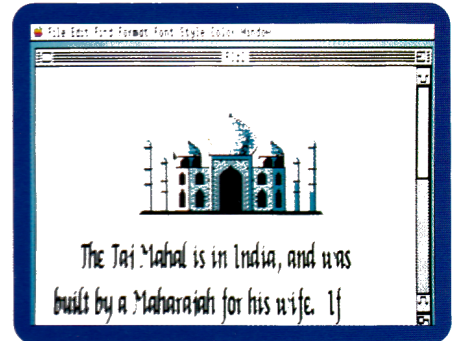
- 12 different fonts, in a variety of sizes.
- Assorted type styles, including boldface and italic, underlined and outlined, crossed out and shadowed.
- Headers and footers; centering and right and full justification; single, double and triple spacing.
- Local rulers that give you total formatting freedom and flexibility.

Three ways to the printed page. Print in black and white with the ImageWriter[™] or LaserWriter[™], or in vivid color with the ImageWriter II.

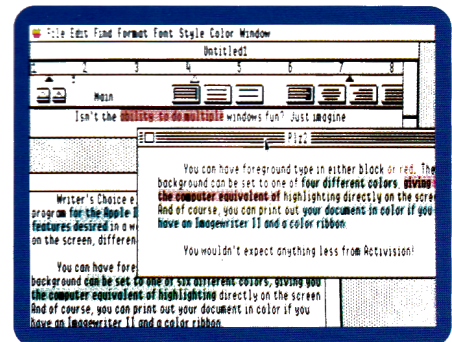
Memory—and memories. With *Writer's Choice elite*, the size of what you write is limited only by your computer's memory. And you don't have to forget anything you've already written – *Writer's Choice elite* can handle ASCII files from any AppleWorks[™] compatible word processor.



Highlight your text in 4 different background colors—even print in color with your color printer.



Place full-color images in your documents with just a few easy steps—without loading any other program. Image shown is from Clip Art Gallery.



Multiple windows allow you to work with many different documents simultaneously, and move text between them instantly.