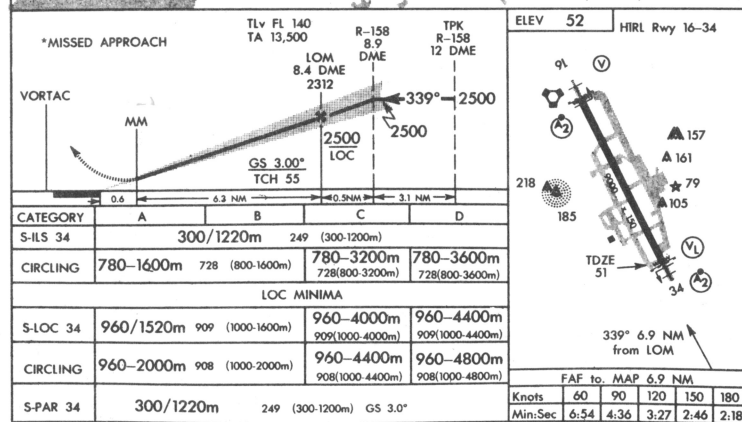
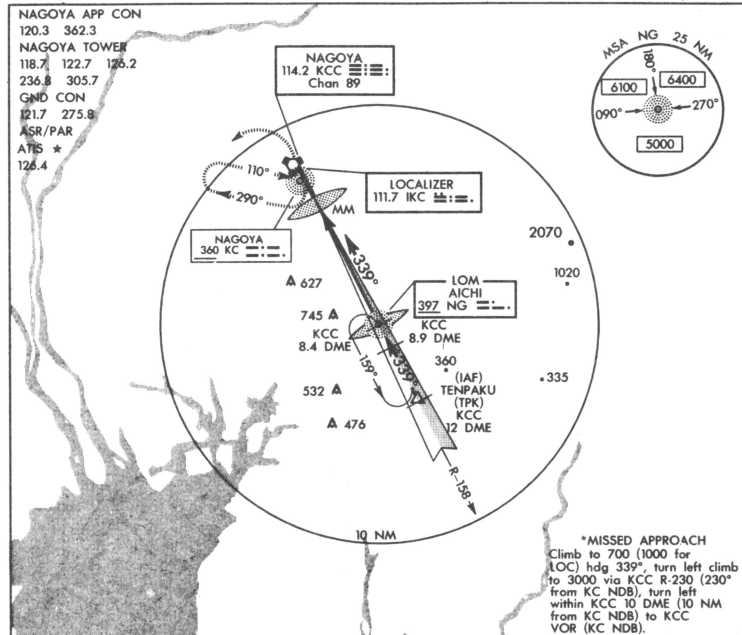


ILS RWY 34

名古屋空港

NAGOYA (RJNN)

NAGOYA, HONSHU I., JAPAN



ILS RWY 34

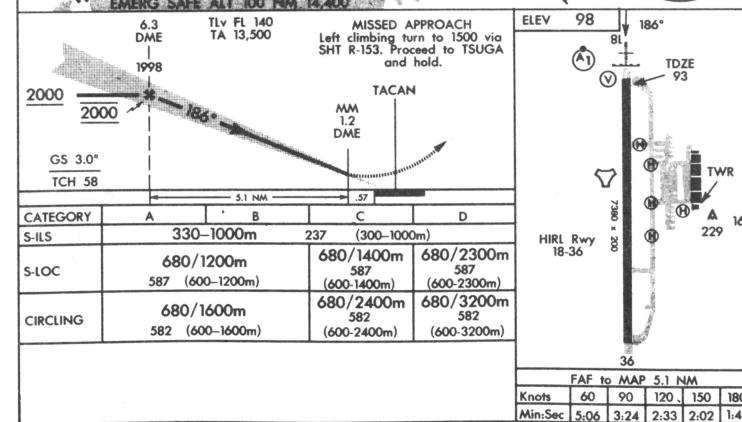
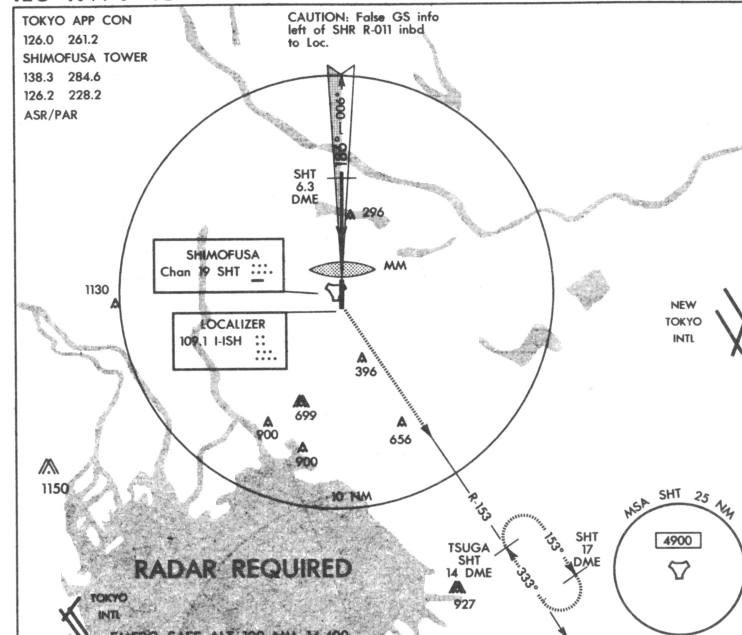
35°15'N-136°56'E

ILS RWY 18

下総飛行場

SHIMOFUSA (RJTL)

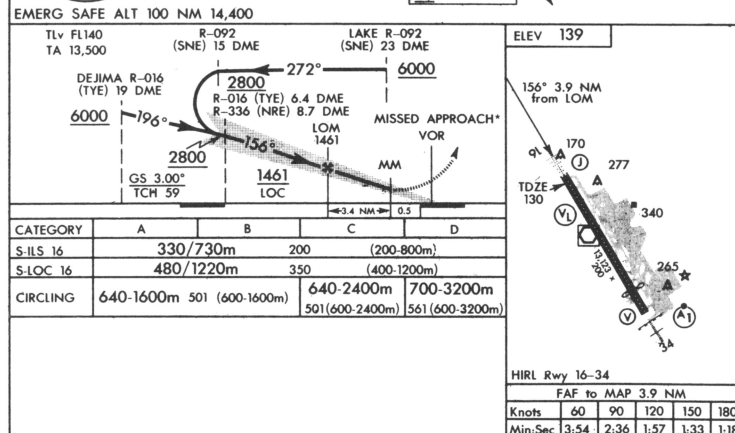
SHIMOFUSA, JAPAN



ILS RWY 18

35°48'N-140°01'E

新東京国際空港(成田)
NEW TOKYO INTL (RJAA)
NARITA, HONSHU I., JAPAN

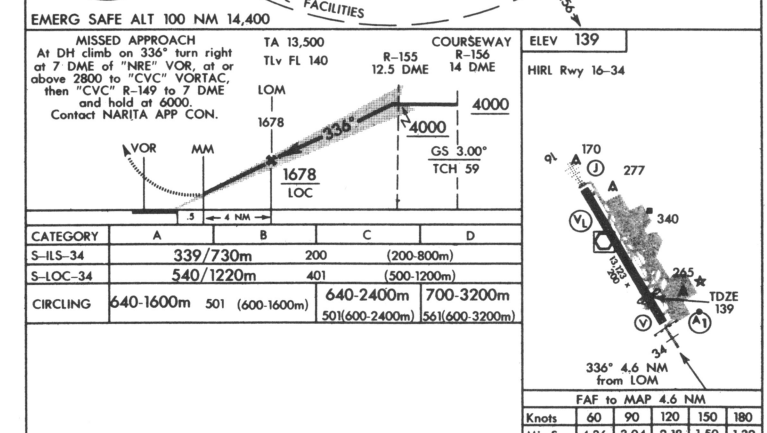


ILS RWY 16

35°45'N-140°23'E

NARITA, HONSHU I., JAPAN
NEW TOKYO INTL (RJAA)

新東京国際空港(成田)
NEW TOKYO INTL (RJAA)
NARITA, HONSHU I., JAPAN



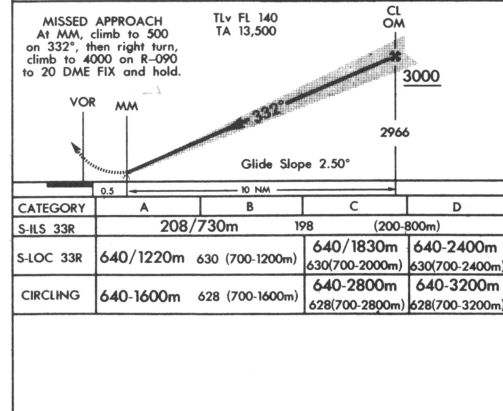
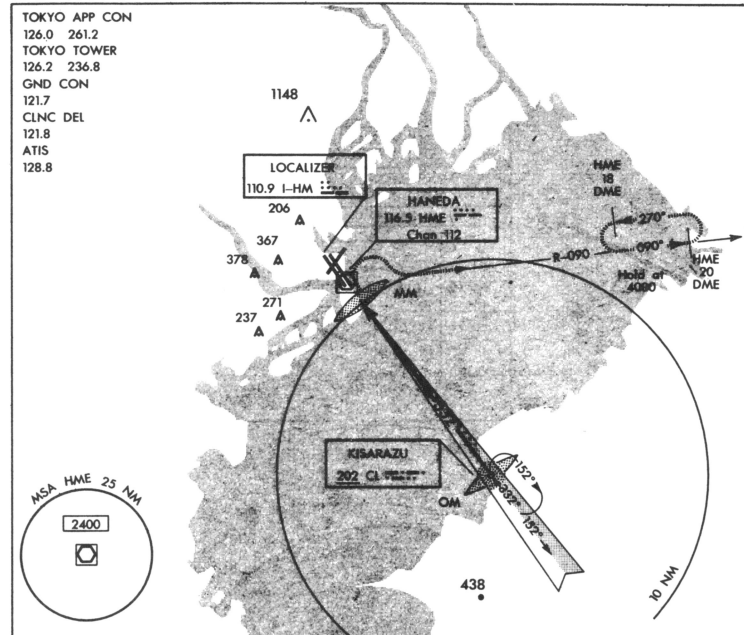
ILS RWY 34

35°45'N-140°23'E

NARITA, HONSHU I., JAPAN
NEW TOKYO INTL (RJAA)

ILS RWY 33R

東京国際空港(羽田)
TOKYO INTL (RJTT)
TOKYO, HONSHU I., JAPAN



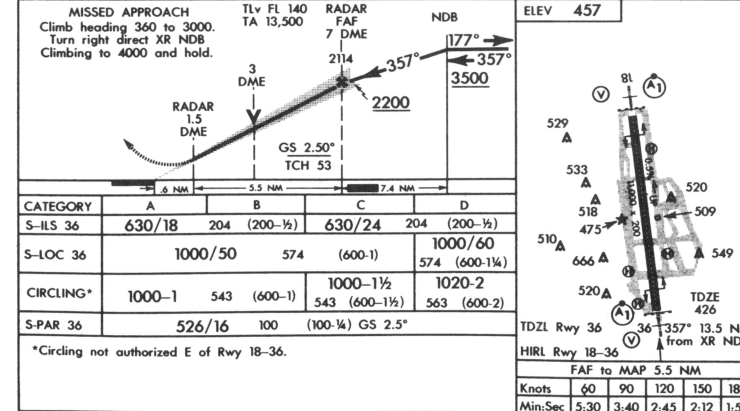
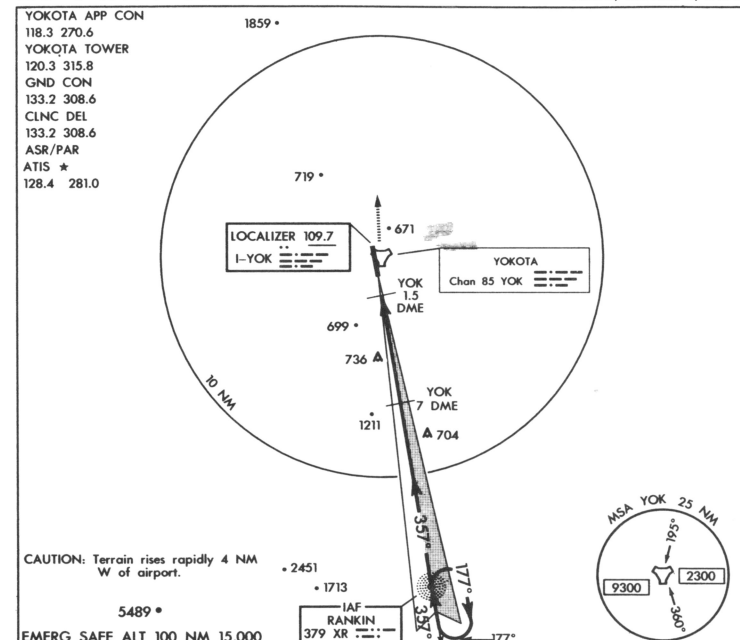
ILS RWY 33R

35°33'N-139°46'E

TOKYO, HONSHU I., JAPAN
TOKYO INTL (RJTT)

ILS-1 RWY 36

横田飛行場
YOKOTA (RJTY)
TOKYO, HONSHU I., JAPAN



ILS-1 RWY 36

35°45'N-139°21'E

TOKYO, HONSHU I., JAPAN
YOKOTA (RJTY)