



Apple® IIGS

Spectrum™ 2.5.3 Program Manual

Spectrum™ v2.5.3

SPECTRUM 2.5

by Ewen Wannop



Seven Hills INTERNATIONAL

COPYRIGHT © 1991-2003 BY EWEN WANNOP

Released as FreeWare 2012

SUPPORT: spectrumdaddy@mac.com

Trademark of Seven Hills Solutions Specialists

Personalized for: Speccie

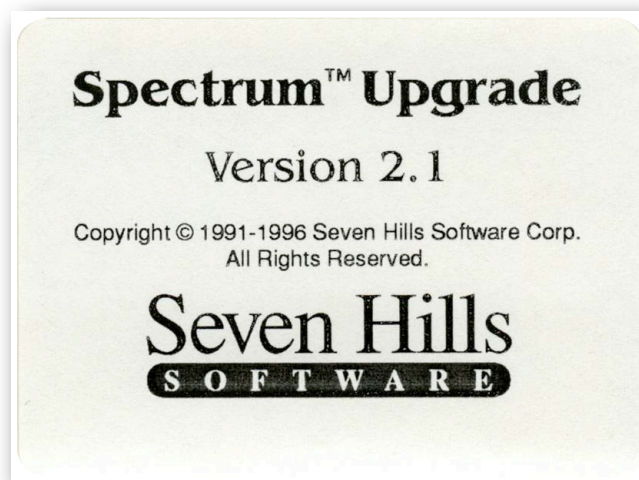
Notes on Freeware Edition

From an initial inception as a Hgs communications program called Impala, Spectrum was developed and released under the guidance of Dave Hecker of Seven Hills International. Originally released back in 1991, it was sold by Seven Hills until their eventual closure.

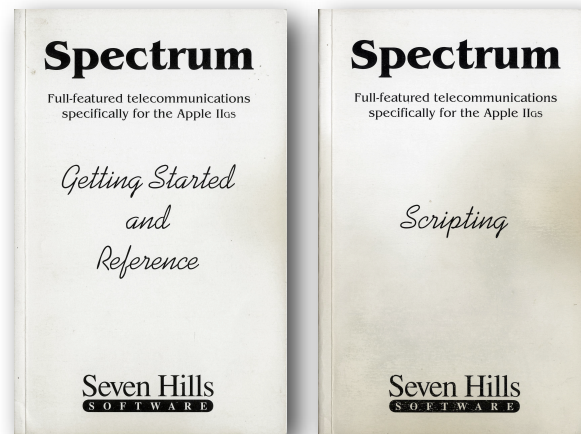
Seven Hills agreed I could continue to sell Spectrum, so I asked Eric Shepherd of Syndicomm to sell Spectrum on my behalf. In 2011 Tony Diaz took over Syndicomm and continued to sell it for me. With the declining sales over the years, I finally decided that the time had come in 2012 to make Spectrum Freeware.

To coincide with its reclassification, this PDF manual has been compiled from the original Seven Hills manuals. I have changed a few words and links here and there, and added new screen shots and illustrations.

Ewen Wannop - 2012



Spectrum



About Seven Hills Software

No Copy Protection

We don't believe in copy protection—all it does is impair the honest user's ability to use software to its fullest. We strive to provide high quality products at reasonable prices. We hope you will support our efforts by not allowing your family or friends to copy this software.

Questions and Comments

We always welcome feedback—if you have any questions, or suggestions for improving this product, please let us know. In addition, we would like to hear your ideas for new programs.

Copyrights and Trademarks

This manual and the software (computer program) described in it are copyrighted with all rights reserved. No part of the Spectrum software or documentation may be reproduced, stored in a retrieval system, or transmitted, in any form or by any means, mechanical, photocopying, recording or otherwise, without the prior written permission of Seven Hills Software Corporation.

SEVEN HILLS SOFTWARE CORPORATION'S LICENSOR(S) MAKES NO WARRANTIES, EXPRESS OR IMPLIED, INCLUDING WITHOUT LIMITATION THE IMPLIED WARRANTIES OF MERCHANTABILITY AND FITNESS FOR A PARTICULAR PURPOSE, REGARDING THE SOFTWARE. SEVEN HILLS SOFTWARE CORPORATION'S LICENSOR(S) DOES NOT WARRANT, GUARANTEE OR MAKE ANY REPRESENTATIONS REGARDING THE USE OR THE RESULTS OF THE USE OF THE SOFTWARE IN TERMS OF ITS CORRECTNESS, ACCURACY, RELIABILITY, CURRENTNESS OR OTHERWISE. THE ENTIRE RISK AS TO THE RESULTS AND PERFORMANCE OF THE SOFTWARE IS ASSUMED BY YOU. THE EXCLUSION OF IMPLIED WARRANTIES IS NOT PERMITTED BY SOME STATES. THE ABOVE EXCLUSION MAY NOT APPLY TO YOU.

IN NO EVENT WILL SEVEN HILLS SOFTWARE CORPORATION OR ITS LICENSOR(S), AND ITS DIRECTORS, OFFICERS, EMPLOYEES OR AGENTS BE LIABLE TO YOU FOR ANY CONSEQUENTIAL, INCIDENTAL OR INDIRECT DAMAGES (INCLUDING DAMAGES FOR LOSS OF BUSINESS INFORMATION, AND THE LIKE) ARISING OUT OF THE USE OR INABILITY TO USE THE SOFTWARE EVEN IF SEVEN HILLS SOFTWARE CORPORATION OR ITS LICENSOR HAS BEEN ADVISED OF THE POSSIBILITY OF SUCH DAMAGES. BECAUSE SOME STATES DO NOT ALLOW THE EXCLUSION OR LIMITATION OF LIABILITY FOR CONSEQUENTIAL OR INCIDENTAL DAMAGES, THE ABOVE LIMITATIONS MAY NOT APPLY TO YOU. SEVEN HILLS SOFTWARE CORPORATION OR ITS LICENSOR(S) LIABILITY TO YOU FOR ACTUAL DAMAGES FROM ANY CAUSE WHATSOEVER, AND REGARDLESS OF THE FORM OF THE ACTION (WHETHER IN CONTRACT, TORT (INCLUDING NEGLIGENCE), PRODUCT LIABILITY OR OTHERWISE), WILL BE LIMITED TO \$50.

Apple, IIs, GS and GS/OS are trademarks of Apple Computer, Inc.

Spectrum © 1991-2003 Ewen Wannop
Spectrum is a trademark of Seven Hills Software Corporation



Spectrum

Welcome to Spectrum

About Spectrum

Spectrum™ is a telecommunications program written specifically for the Apple IIgs. It uses the standard Apple IIgs “desktop interface” so it’s powerful, yet easy to learn and use.

The simplicity of the IIgs desktop interface, and the memory available in the IIgs, allows many features in Spectrum that are not practical in ordinary communications programs.

A powerful scripting language allows Spectrum to be tailored specifically for individual use. Scripts can do almost anything, ranging from emulating an electronic bulletin board to the daily automatic logging, sending and retrieving of mail.

Spectrum is an expandable program that allows access to many different “host” computers and systems. In addition to the standard Super Hires screen display, Spectrum can use an 80 column text screen display. Additional “drop in” displays are also provided (ANSI, ProTERM™ Special, Viewdata, VT100, etc.).

Our goal was to make Spectrum a very useful tool so it would be valuable to you. By making a quality program available at a reasonable price, we think we have succeeded.

Seven Hills Software Thanks...

Ewen Wannop for his incredible patience and skill writing Spectrum.

Kathryn Beth Willig for getting us together with Ewen; we miss you.

Richard Bennett for an amazing port routine, great online displays, and his patience answering so many questions.

All our **beta testers** and **user group Partners** for their guidance and support.

And **you**, for supporting our IIgs publishing efforts!

Note from the Author...

Spectrum has taken me many years to complete. In fact, I originally bought my Ilgs to write the program. I have had many steep learning curves during this period, and have changed my mind a number of times. Finally I got to the point where the program was a true, working reality.

At the time, I was a full time lecturer in desktop publishing and computer graphics at an art college in England. I was also a Sysop of the TABBS Bulletin Board. The programming (in APW assembler) was done in any spare moments that I had left... hence the time it took to gestate Spectrum!

When I set out to write Spectrum, there were no communications programs like America Online or CompuServe Information Manager to model it on, so Spectrum was conceived of as a conventional communications program. From the outset, I had ideas for some unique features, most of which have made it into the final version.

Spectrum is my third major telecommunications program. My first two were very conventional: Data Highway, which runs under DOS 3.3, and Gazelle, which runs under ProDOS. Neither of these programs were ever sold openly in the US market, but were popular in Europe because both included Viewdata display drivers as well as 80 column displays. I also wrote Chameleon, a shareware file transfer utility.

I give my thanks to all those who have contributed to making this program possible, and especially to Woz (who created the environment) and to Dave Hecker (who patiently guided its progress).

I hope you find Spectrum as useful and enjoyable as I have!

About Spectrum

Read this manual to learn about using Spectrum to its fullest. The manual is divided into three main sections:

- The *Getting Started* section guides you through one-time steps, including making a working copy of Spectrum.
- The *Guided Tour* section gets you started using Spectrum.
- The *Reference* section contains detailed information about Spectrum.

Enjoy!

Table Of Contents

Getting Started Section

Things You Need To Know	10
Installing Onto 3.5" Disks	11
Installing Onto A Hard Disk Drive	14

Guided Tour Section

Starting Spectrum	16
Using 3.5" Disks	16
Using A Hard Drive	16
Introducing Spectrum	17
Check Your System Extensions	17
Warning About Interrupts	17
Getting Connected	18

Reference Section

Menus	19
Command Keys	19
Hierarchic Menus	19
🍏 (Apple) Menu	21
About Spectrum	21
Help	21
Desk Accessories	21
File Menu	22
New	22
Open Editor Document	22
Close	22
Save	22
Save As	22
Send File	22
Receive File	24
Capture	24
Clear Capture Buffer	25
Capture To File	25
Page Setup	25

Print	25
Launch	26
Quit	27
<i>Edit Menu</i>	27
Undo	27
Cut	27
Copy	27
Paste	27
Clear	27
Select All	27
Paste as Reply	27
Send Clipboard To Modem / Send Selection To Modem	28
Append Selection To Editor	28
Choose Font	28
Text Color	29
Format Text	29
Find/Replace	30
<i>Show Menu</i>	31
Online Display	31
Editor	31
Capture Buffer	31
Scrollback	32
Clipboard	32
Chat Line	32
Status Line	32
<i>Phone Menu</i>	33
Dial Number	33
Hangup	35
Send Break	35
Start Timer / Stop Timer	36
Clear Timer	36
Answer Back	36
<i>Script Menu</i>	37
Learn A Script	37
Run A Script	38
Rerun Script In Memory	38
Run Editor As Script	38
Load Menu File	38
Clear Menu File	39
<i>Settings Menu</i>	40
Port	40
Online Display	42
...More Display Options	44
Character Filter	44
File Transfer	45
Save Settings	46
Load Settings	46
Status	47

Transferring Files	48
<i>General Tips</i>	48
<i>File Transfer Protocols</i>	49
Text	49
Other Protocols	49
<i>Binary II Headers</i>	52
Other Information	53
<i>The Startup Process</i>	53
<i>General Keys</i>	53
<i>Using Twilight II</i>	53
<i>Using High Speed Modems</i>	54
<i>Using The Manager</i>	55
Questions and Answers	56

Appendices

A — Modem Cable Wiring	58
B — Common Hayes Commands	60



Spectrum Version 2.5.3

Installation

Installation Instructions	63
---------------------------	----

Feature Changes

Feature Changes	65
-----------------	----

General Changes & Bug Fixes

 (Apple) Menu	67
File Menu	67
Open	67
Save	67
BabelFish™	67
Send/Receive	67
Launch	68
Quit	68
Edit Menu	68
Paste	68
Paste As Reply	68
Find/Replace	68
Signature	68
Show Menu	69
Online Display	69
Editor	69
Clipboard	69
Chatline	69
Phone Menu - TCP/IP Menu	69
Dial Number - Services	69
Hangup - Connect - Disconnect	70
Switch to TCP/IP - Switch to Serial	70
Answer Back - Logout	70
Service Items	70
Script Menu	70
Learn a Script	70
Menu Files	70
Settings Menu	70
Online Display	70
ANSI	71
Options	71

External Commands (XCMDs)	71
---------------------------	----

TCP/IP	72
--------	----

TCP/IP Menu	72
Services	72
Service Entries	72
Login	72
Telnet	72
Connect - Disconnect	72
Send Break	73
Switch to Serial	73
Close Connection	73
Connections	73



Getting Started



We know you are anxious to start using Spectrum, but please read this section first because it leads you through several important steps which you need to do only once:

- Learning conventions and terminology
- Getting your Ilgs ready to start a Ilgs-specific program
- Making a working copy of Spectrum

After completing the *Getting Started* section, you will use the *Guided Tour*. It teaches you about Spectrum by showing you how to use several of its features.

Following the tour is the *Reference* section, which covers every aspect of Spectrum. It is the best place to look when you need added information or help with a particular feature.


Things You Need To Know

Requirements

To use Spectrum you need:

- An Apple Ilgs with at least 1MB of memory.
- One 3.5" disk drive (a hard disk drive is strongly recommended).
- Apple Ilgs System Software version 6.0 or later. *NOTE: "System 6" requires a computer ROM version of at least 01—when you turn on the computer, if the bottom of the screen does not show a version number, contact your authorized Apple dealer for an upgrade.*
- A modem connected to the modem or printer port on the back of the Ilgs, or to an Apple Super Serial Card (and workalikes) in any slot. Spectrum is also compatible with Applied Engineering's DataLink internal modem (and workalikes).
- To print, you need any printer that works with a standard Ilgs printer driver (we assume you have the appropriate printer drivers available to you). If you wish to print to a Hewlett-Packard DeskJet, DeskWriter, or LaserJet, you can purchase and use the Independence printer driver package.
- If you use The Manager from Seven Hills Software, you must use version 1.1 for smooth operation with Spectrum.

Keys on Your Keyboard

Keys on the keyboard are referred to by the name printed on them (*Delete*, *Option*, *A*, etc.). The Command key is shown as .

Steps

Steps you should follow are indented and numbered. For example:

- ① Use Spectrum.
- ② Connect to almost any system in the world!

Mouse Terms

This manual uses four terms to describe the different ways you can use the mouse:

Clicking means quickly pushing down and releasing the mouse button while the mouse remains motionless. One use of clicking is to select a command.

Double-Clicking means quickly clicking twice. Double-clicking is commonly used as a shortcut for some action. For example, double-clicking on a folder opens that folder.

Pressing means holding the mouse button down while the mouse remains motionless. The most common use is pressing on a scroll bar's arrow to cause the document to scroll until the mouse button is released.

Dragging means holding the mouse button down, moving the mouse to a new position and finally releasing the mouse button. Common uses are choosing a menu item and moving or resizing a window.

Installing Onto 3.5" Disks

This section describes installing Spectrum onto 3.5" disks. If you are installing Spectrum onto a hard disk drive, skip to the section titled "Installing Onto A Hard Disk Drive."

NOTE: When using Spectrum with 3.5" disk drives, the "Spectrum Sounds" disk is not used at all—please store it in a safe place.

Locate Your System 6 "System.Disk"


Spectrum requires the Apple IIgs System Disk, version 6.0.0 or later. You should have several System 6 master disks. Locate the one labeled *System.Disk*, then skip to the next section, "Start The Computer."

If you do not own System 6 you can purchase it from Syndicomm: <http://store.16sector.com/>

Your local user group may also have it available.

Start the Computer

Follow these steps to start the computer:

- ① Insert the original System 6 disk labeled *System.Disk* into the startup disk drive.
 - ② Turn on the monitor and computer (if the computer is on already, hold -Control down and press Reset). The 3.5" disk drive will come on and begin loading Apple's Finder. **NOTE:** If you did not set your 3.5" disk drive to be the startup slot, the computer will try to start up from some other disk drive. If you get the message "Check Startup Device," hold Control and press Reset. At the prompt type **PR#5** (assuming your 3.5" disk is in slot 5) and press Return.
-

Personalize Spectrum

Follow these steps to personalize Spectrum. **NOTE:** These steps must be followed using the original *Spectrum* disk, before you make a working copy.

- ① Make sure the original disk labeled *Spectrum* is **not** write-protected. That is, make sure you **cannot** see through the hole in the upper-right corner of the disk.
 - ② Insert the original disk labeled *Spectrum* (if you have only one 3.5" disk drive you will have to eject the *Startup Disk*). A window titled "Spectrum" should appear...if not, choose Open from the File menu.
 - ③ Click on the Install icon to select it.
-

-
- ④ Choose Open from the File menu. If you have only one 3.5" disk drive you will be prompted to switch disks. When you are asked to insert a particular disk, insert it and click OK.
 - ⑤ When you are asked to do so, type your full name then click the OK button.

Soon Apple's Installer window is displayed. However, you will not use the Installer because you are installing onto 3.5" disks. Therefore:

- ⑥ Choose Quit from the File menu and the Finder reappears.

Make Working Copies

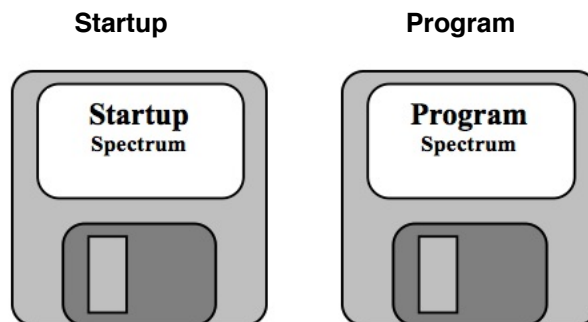
Please take the time to make a working copy of each of the supplied disks. After making your working copies, store the original disks in a safe place so if a problem ever develops with a working copy another can be made from the original disk. If a problem ever develops with an original disk, you can download a new copy from <http://www.wannop.info/speccie>.

NOTE: Throughout this entire section you will be using both the original disks and your working copies—you will not be done with the original disks until you begin the Guided Tour section. The original disks are safe as long as you can see through the hole in the upper-right corner of the original disks.

Initialize Two Disks

Before proceeding, protect the original Spectrum disk by making sure that it is write-protected! Look at the hole in the upper-right corner—the disk is write-protected if you can see through the hole. If you cannot see through the hole, slide the tab so you can.

To make a working copy of Spectrum you need two initialized (but otherwise blank) 3.5" disks:



Repeat these steps to initialize each disk:

- ① Insert a blank disk into a 3.5" disk drive.
- ② When you are told "GS/OS can't read this disk. Do you want to initialize it?" click the Initialize button.
NOTE: If you do not see this message and instead a disk icon appears on the desktop, make sure the disk is one that can be destroyed! If it is, choose Initialize from the Disk menu (never initialize an original Spectrum disk).
A dialog box appears, in which you can specify the disk's name, format, size, and interleave.
- ③ Type a name for the disk (e.g. *Startup* or *Program*). Do not change the suggested format or size/interleave options.
- ④ Click Initialize and the process is begun. If the disk is initialized successfully, a new disk icon appears on the desktop (use another disk if an error occurs).
- ⑤ Drag the new disk icon onto the Trash icon. This ejects the disk and removes its icon from the desktop.
- ⑥ Label the disk with the correct name (*Startup* or *Program*).

After initializing and applying a label to the two disks, you are ready to copy the original disks.

Copy the Disks

Before proceeding, protect the original Spectrum disk by making sure that it is write-protected! Look at the hole in the upper-right corner—the disk is write-protected if you can see through the hole. If you cannot see through the hole, slide the tab so you can.

Follow the steps below to make an exact copy of each of the supplied disks:

- ① Insert the disk you want to copy *onto* (one of the disks that you initialized and hand-labeled). The first “destination disk” is the disk hand-labeled *Startup*, so insert that disk (eject a disk if necessary).
- ② Insert the disk you want to copy *from*. The first “source disk” is the System 6 disk labeled *System.Disk*, so insert that disk (eject a disk if necessary).
- ③ Drag the original disk icon onto the hand-labeled disk icon: Position the arrow pointer over the original disk icon, hold down the mouse button, drag onto the hand-labeled disk icon (it turns black) then release the mouse button. The first copy is made by dragging the *System.Disk* icon onto the *Startup* icon.
- ④ The Finder asks if you want to replace the contents of the destination disk with the contents of the source disk. Click OK to proceed. *NOTE: If you get a message stating that the destination disk is write-protected, you are trying to copy in the wrong direction—click the Cancel button and go back to step 3, making sure you drag the source disk icon onto the destination disk icon.*

During the copy process the Finder may ask you to insert a particular disk. Find the desired disk and insert it to continue.

When the Finder is finished copying the disk,

- ⑤ Drag the source disk icon onto the Trash icon. This ejects the disk and removes its icon from the desktop.
- ⑥ Drag the destination disk icon into the Trash to eject it and remove its icon from the desktop.

Repeat steps ①– ⑥ for each of the following disks:

Drag:	Onto:
<input checked="" type="checkbox"/> System.Disk	Startup
<input type="checkbox"/> Spectrum	Program

Remove Unnecessary Files

Your working *Program* disk currently contains files that you won’t need. These files can be removed to give you more disk space.

- ① Insert your hand-labeled *Program* disk.
- ② Drag the “Install” icon into the Trash.
- ③ Drag the “Misc.” folder icon into the Trash.
- ④ Drag the *Program* disk icon into the Trash to eject the disk and remove its icon from the desktop.

Shut Down

Now shut down the system to stop using the original disks:

- ① Choose Shut Down from the Special menu.
- ② Click OK to Shut Down (turn off system power). Store both original Spectrum disks in a safe place.

Skip to the *Guided Tour* section to begin using Spectrum.

Installing Onto A Hard Disk Drive

This section describes installing Spectrum onto a hard disk drive. If you are installing Spectrum onto 3.5" disks, go back to the section titled "Installing Onto 3.5" Disks."

System 6.0.1 Required

Spectrum v2.3 requires Apple IIgs System Software version 6.0.1 or later. If System 6.0.1 isn't already installed on your hard disk drive, use the System 6.0.1 master disks to install it.

If you do not own System 6 you can purchase it from Syndicomm: <http://store.16sector.com/>

Your local user group may also have it available.

Install Spectrum

Start the Computer

Installing Spectrum on a hard disk drive is easy...just follow these steps:

- ① Start up your hard disk drive and your Apple IIgs just as you usually do.

Personalize Spectrum

When you reach the point where you can launch an application,

- ① Make sure the original disk labeled *Spectrum* is **not** write-protected. That is, make sure you **cannot** see through the hole in the upper-right corner of the disk.
 - ② Insert the original disk labeled *Spectrum* into a 3.5" disk drive.
 - ③ Launch the "Install" program.
 - ④ When you are asked to do so, type your full name and click the OK button.
-

Install Spectrum

Soon Apple's Installer window is displayed. The scroll box contains "scripts" that can be used to install Spectrum.

- ① Click the Install button and Spectrum with its icons are copied to the disk that was used to start up the computer. *NOTE: If you want to install Spectrum to some other disk, click the Disk button until that disk is displayed.*
 - ② If you want to install sounds that are played automatically by Spectrum, highlight the "Install Spectrum Sounds" script, then click Install.
 - ③ After Spectrum is installed, click the Quit button.
-

Shut Down

If you only installed Spectrum (i.e. you did not install the sounds):

- ① Wait until the Finder appears (the program with the disk icons and Trash icon).
 - ② Choose Shut Down from the Special menu.
 - ③ Click OK.
 - ④ Store both original Spectrum disks in a safe place.
-

If you installed the sounds:

- ① Click the Restart System button to restart the computer.
- ② Eject the original Spectrum disk, and store both original Spectrum disks in a safe place.
- ③ When the computer is restarted, choose Control Panels from the 🍏 (Apple) menu.
- ④ Open the “Sound” CDEV (scroll down if necessary to find it). The system will gather the names of all the new sounds, thus making them available to Spectrum.
- ⑤ When you can proceed, close the Sound window, then close the Control Panels window.

That's it! Spectrum is now installed and you're ready to begin the *Guided Tour* section.





Guided Tour

The *Guided Tour* section guides you through several Spectrum features. Complete information about each Spectrum feature can be found in the *Reference* section.

IMPORTANT: If you have trouble with dropped/missing/lost characters when communicating with Spectrum, be sure to read the “Check Your System Extensions” section in this manual!

Starting Spectrum

Using 3.5" Disks

Make sure you cannot see through the write-protect holes on your hand-labeled Startup and Program disks. Spectrum and the system will not operate properly if you try to operate with write-protected disks.

To start Spectrum from the working copies of the original 3.5" disks, follow these steps:

- ① Insert the disk hand-labeled *Startup* into the startup disk drive.
- ② Turn on the monitor and computer (if the computer is on already, hold ⌘-Control down and press Reset). The 3.5" disk drive will come on and begin loading Apple's Finder. *NOTE: If you did not set your 3.5" disk drive to be the startup slot, the computer will try to start up from some other disk drive. If you get the message “Check Startup Device,” hold Control and press Reset. At the prompt type PR#5 (assuming your 3.5" disk is in slot 5) and press Return.*
- ③ When the Finder appears, insert the disk hand-labeled *Program* (if you have only one 3.5" disk drive you'll need to eject the *Startup* disk first).
- ④ Click on the Spectrum folder icon to select it, then choose Open from the File menu.
- ⑤ Select the Spectrum icon, then choose Open from the File menu.

If you have only one 3.5" disk drive you will be prompted to switch disks as Spectrum is loading, and while using Spectrum. When you are asked to insert a particular disk, insert it and click OK.

Skip to the next section, “Introducing Spectrum.”

Using A Hard Drive

Follow these steps to start Spectrum from the hard drive:

- ① If it is not already started, start up your hard disk drive and your Apple IIgs just as you usually do.
- ② When you reach the point where you can launch an application, launch Spectrum (it is located in a “Spectrum” folder on the main level of the drive that you installed onto).

Introducing Spectrum

After the program is loaded, you'll see Spectrum's menu bar at the top of the screen. The first time you launch Spectrum you will be given a brief tour. **Follow the directions on the screen.** After the tour is complete, continue reading here.

Check Your System Extensions

"System extensions" are things such as Control Panels (CDEVs), Desk Accessories (CDAs and NDAs), and System Setup files (INITs). All active extensions require some memory, and that memory is not available to applications. If you have just 1MB memory you should consider removing or inactivating any unnecessary extensions to give Spectrum the most memory possible.

Spectrum has been tested with a variety of extensions and we believe it has no serious operational problems. If you suspect there is a problem with Spectrum, follow these steps:

- ① Shut down and turn off your computer.
- ② Hold down the Shift key and turn on your computer. Continue holding down the Shift key until the "Welcome to the IIGS" dialog box says "No INITs/DAs"—this tells you that no extensions will be active.
- ③ Launch Spectrum.
- ④ When a note informs you that the Hierarchic init is not loaded, click the Load button and Spectrum will continue its startup process.

Once Spectrum has been started after a "Shift boot," see if the problem still exists. If the problem disappears then one or more of your system extensions is causing the problem. If the problem persists, read the "Questions and Answers" section of this manual to see if the problem you're having has a simple explanation. If you need further help, please contact us.

Warning About Interrupts

Some system extensions need to get control of the computer every so often in order to perform a task. There are two basic ways to do this. Some extensions, like our Express printer spooler, get control by using the *run queue*. This is a very friendly way to get control because the system is never interrupted; instead, the extension is called only when the system is available.

Other extensions, however, get control by using an *interrupt*. Getting control through an interrupt is less friendly to the system, but is a perfectly legitimate method *provided it is done properly*. Specifically, an interrupt routine must perform its task *very quickly*, so that other parts of the system do not suffer in performance.

Spectrum's port driver is "interrupt-based" and runs very quickly. However, in order to not lose characters, it relies on getting interrupts regularly. Because other interrupt-based extensions are also competing for interrupt time, the more of these extensions you have, the more likely it is that Spectrum will lose characters (especially at high baud rates). And if an interrupt-based extension takes too much time to do its job, even more characters will be lost.

If you know you have a good phone connection but you find that characters are being dropped regularly (or file transfers are slower than they should be), it is very likely that one of the extensions on your startup disk is causing the problem.

The following extensions that have been known to cause character loss: Cool Cursor, ProSel's "Appointments", SHR 10-Second Saver CDA, ShowMe, SoundMeister, Twilight II. *NOTE: There may be newer versions available that no longer cause a problem. Contact the author or publisher to see if you have the latest version.*

We are sure there are other extensions that cause problems; this list contains just the ones we were aware of at the time this manual was printed. Please let us know if you find any extension that causes problems.

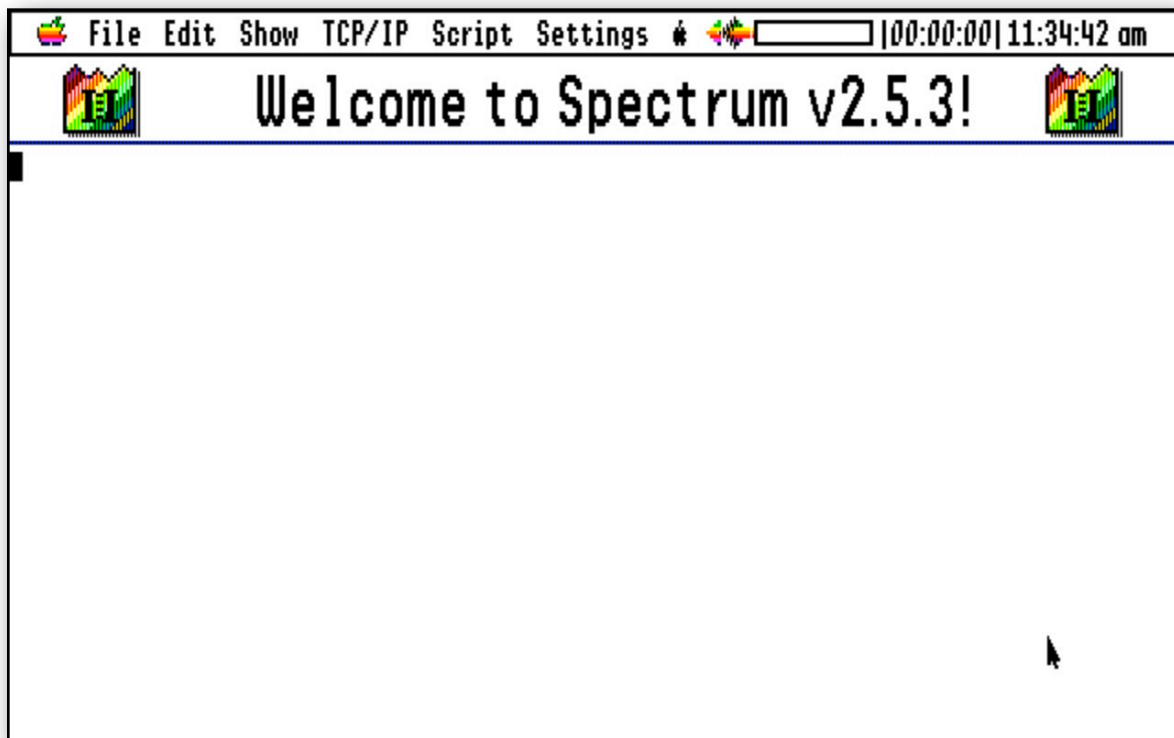
Getting Connected

Because there are too many factors in connecting to a host we cannot provide specific steps to show as an example. However, the general process is as follows:

- ① Create a phonebook entry for the host (see “Dial Number”). Although it is not necessary to create a phonebook entry for every system you call, it is usually more convenient to do so.
- ② Dial the phonebook entry (see “Dial Number”).
- ③ After connection to the host, follow the instructions the host gives you to log on.

The best way to learn how to use Spectrum is by actually using it. Once you are connected (we recommend connecting to a free, local bulletin board for your experiments) you can experiment with turning Spectrum's capture buffer on and off, sending and receiving files, and so on.

After you are familiar with Spectrum, try using Scripts to automate repetitive tasks, such as logging on to a system or reading your mail.



Reference

The *Reference* section describes all the features found in Spectrum. This section is organized for reference—use it to learn about a specific feature.

A particular topic or command can be found in the Table of Contents or Index.

Menus

Menus contain all the commands available in Spectrum. The titles of all the menus are shown in the menu bar at the top of the screen. To see the commands available in a menu, pull it down by pointing to its title and pressing the mouse button. When a command is dim it is not available at the moment.

This section is organized by the menu titles and menu commands.

Command Keys

Many commands have keyboard shortcuts that let you give the command without using the mouse. These shortcuts are listed to the right of the corresponding commands in the menus. For example, pull down the File menu and you will see several keyboard shortcuts listed: ⌘ N for New, ⌘ O for Open, and so on.

To use a keyboard shortcut, hold down the Command key (⌘) and press the letter listed on the menu. The Command key has a hollow apple and a cloverleaf on it, and is located between the Option key and the tilde key at the lower-left of the keyboard. *NOTE: Although shortcuts in this manual are shown as uppercase, all Spectrum shortcuts can be accessed by holding the Command key and typing either a lower case **or** upper case letter.*

Hierarchic Menu

Spectrum uses a familiar menu bar at the top of the screen, with an important addition: Some of the menu items are “hierarchic” (a fancy way to say that a “sub-menu” of choices will appear when you highlight a main menu item).

A menu item has a sub-menu if it has an arrow icon where a keyboard shortcut would normally appear. In the menu above, the Send File, Receive File, and Capture to File items will each present a sub-menu.

Using A Hierarchic Menu

Using a hierarchic menu is similar to using a regular menu: You just highlight the option you want. Here’s how:

- ① Pull down a menu that contains a hierarchic menu item. For example, pull down the File menu.



A hierarchical menu

-
- ② Drag the mouse down to highlight that hierarchic menu item and a sub-menu appears. For example, highlight the Receive File menu item.
 - ③ With the main menu item still highlighted, drag the mouse *directly* to the right (do not drag up or down off the main menu item).
 - ④ Once an item on the sub-menu is highlighted, drag down to highlight an item on the sub-menu, then release the mouse button. For example, highlight Xmodem then release the mouse button. *NOTE: If you are following the example, click the Cancel button to continue.*


Changing Menu Delays

When you were trying to select an item on the sub-menu, you might have accidentally dragged off the main menu item before a sub-menu item was highlighted, causing the sub-menu to disappear. That is why the step cautioned to drag the mouse *directly* to the right.

If you always had to be that exact, using hierarchic would be a chore. Fortunately there are two settings that can be adjusted for hierarchic menus: An “Initial Delay” and a “Drag Delay.”

The Initial Delay determines how soon a sub-menu will appear after highlighting a main menu item. The Drag Delay determines how long the sub-menu will stay open, even if you drag off the main menu item.

To change these settings:

- ① Hold down the  and Control keys. While still holding down those two keys, press and release the Escape key. The normal desktop disappears and the text-based “classic” Desk Accessory menu appears.
- ② Press the Down Arrow to highlight the “Hierarchic Settings” option, then press Return. This opens the “Hierarchic Settings” desk accessory.

Each delay is set to 0/60ths (no delay), but it is easier to choose sub-menu items if there is a delay. Delays are specified in “60ths of a second.” For example, 1/2 second is 30/60ths of a second; 1 second is 60/60ths; 2-1/2 seconds is 150/60ths and so on. The longest delay that can be set is 254/60ths (slightly over 4 seconds).

To increase each delay:

- ③ The Drag Delay option is already highlighted. Hold down the Left Arrow until the number is 240/60ths (four seconds).
- ④ Press the Down Arrow to highlight the Initial Delay option.
- ⑤ Hold down the Right Arrow until the number is 60/60ths (one second).
- ⑥ Press Escape to highlight the Quit option and press Return to go back to the classic Desk Accessory menu.
- ⑦ Press Escape to highlight the Quit option and press Return to go back to the normal desktop.

To see the effect the delays have, repeat the earlier steps to highlight an item on the sub-menu...but instead of dragging directly to the right, this time drag down and to the right, making a “beeline” for the desired item on the sub-menu.

As you do this, you’ll notice that the sub-menu does not appear immediately; it appears only after the main menu item is highlighted for one second (the Initial Delay).

Next you’ll notice that even though you drag off the main menu item, the sub-menu does not disappear (the Drag Delay).

As you become more familiar with using hierarchical menus, you will probably want to reduce the delays significantly (we use a drag delay of 120/60ths and an initial delay of 15/60ths). *NOTE: Even with a long drag delay, fast vertical mouse motion will cause the sub-menu to disappear before the specified delay. This is intentional to avoid a long delay if you accidentally highlight the wrong menu.*

🍏 (Apple) Menu

About Spectrum

Choose About Spectrum to display the program's version number and copyright information.



About Spectrum dialog box

Help

Choose Help to display the online help. An error is displayed if the file "Spectrum.Help" cannot be found in the "Add.Ons" folder, or if there is insufficient memory to load it.

Desk Accessories

IMPORTANT: If you have trouble with Spectrum, be sure to read the "Check Your System Extensions" section in this manual!

New Desk Accessories

New Desk Accessories (NDAs) you installed appear under the 🍏 (Apple) menu. NDAs are stored in the System:Desk.Accs folder of your startup disk (filetype \$B8).

To use an NDA, choose it from the 🍏 (Apple) menu like any other command. For information about using a particular NDA you must refer to the documentation that came with it.

Control Panel

Control Panel lets you change various system-related options, including your printer setup. Refer to the documentation that came with your Apple IIgs for information about changing the printer type and connection method.

Classic Desk Accessories

To access any Classic Desk Accessories (CDAs) stored in the System:Desk.Accessories folder of your startup disk (filetype \$B9), hold down ⌘-Control while you press and release Esc.

For information about using a particular CDA you must refer to the documentation that came with it.

File Menu

New

Shortcut:  N

Choose New to clear the online display (if the online display is frontmost) or to start a new editor document (if the editor window is frontmost). If the current editor document needs to be saved, you will be asked if you want to save changes first.


Open Editor Document

Shortcut:  O

Choose Open Editor Document to open a Text, Teach, or AppleWorks document in the editor. If the current editor document needs to be saved, you will be asked if you want to save changes first. *TIP: To open the data fork of a file that is not a Text, Teach, or AppleWorks document, hold down the Option key before choosing Open*

Close

Shortcut:  W

Choose Close to close the frontmost window (e.g. the online display window, the editor window, a desk accessory, etc.). **NOTE: If you are using an online display that does not provide access to the File menu, press  W to close the online display and return to the standard desktop.**

When you close the editor window you will not be asked if you want to save it, because closing just hides the window. This ability lets you keep text in the editor while you are online; you can make notes in the editor or compose a message reply that can be sent using the “Send Editor Text” command.

Save

Shortcut:  S

Choose Save to save the contents of the frontmost window. If a file name is needed you will be asked to specify its name and location. At the same time you can specify the file format to use (Text, Teach, or AppleWorks).

Save As

Choose Save As to save the contents of the frontmost window. You will always be asked to specify the name and location for the file, as well as the file format to use (Text, Teach, or AppleWorks Classic).

Send File

NOTE: See the “Transferring Files” section for more information about the following protocols.

After instructing the host that you will be sending a file, choose the appropriate protocol from the Send File sub-menu.

CIS B+, Xmodem, 1K Xmodem, 4K Xmodem

These protocols can send any single file; after choosing one of these you are asked to select the file to send.

Ymodem Batch, Ymodem-g, Zmodem

These protocols can send either a single file or several files at a time; after choosing one of these you are asked to select the file(s) to send. To highlight multiple files, hold down the Shift key when clicking to select ranges of files, or hold down the ⌘ key to select individual files. Folders can also be selected, but they will be ignored.

Text File

Shortcut: ⌘ I

Choose Text File from the Send File sub-menu to send the contents of a Text, Teach, or AppleWorks document. While selecting the file to send you can also set these options:



A portion of the Send Text File dialog box

Display and capture to buffer: When this option is checked, the text is displayed and captured to the buffer just as if you were typing it. When this option is not checked, the text is sent using the “file transfer status” dialog box.

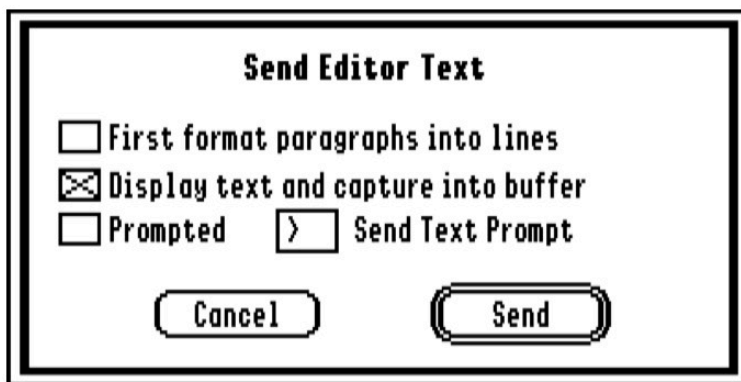
Prompted: This option is dim unless a prompt character is specified in the File Transfer Settings dialog box. When this option is checked, Spectrum starts sending the text but at each Return character it waits up to 20 seconds to receive the prompt character before sending the next line. When this option is not checked, the entire file is sent without waiting for any prompt.

NOTE: The text is sent using the character and line delays specified in the Port Settings dialog box.

Editor Text

Shortcut: ⌘ J

Choose Editor Text from the Send File sub-menu to send all the text that’s currently in the editor. Before sending the text you can set the following options:



A portion of the Send Editor Text dialog box

Format Paragraphs Into Lines: When checked, paragraphs are split into lines before being sent.

Display text and save to buffer: Same as when sending a text file (see above).

Prompted: Same as when sending a text file (see above). You can change the prompt character if desired.

Receive File

NOTE: See the “Transferring Files” section for more information about the following protocols.

After instructing the host system to send you a file, choose the appropriate protocol from the Receive File sub-menu to receive the file. *NOTE: To capture incoming text to a disk file, see the Capture To File option (below).*

CIS B+

This protocol receives a single file. After choosing Receive CIS B+ the file transfer occurs automatically and the received file is stored in the file transfer folder. *NOTE: If the Auto Receive option is checked (File Transfer Settings dialog box), CIS B+ transfers are started automatically so you won't have to choose this option.*

Xmodem, 1K Xmodem, 4K Xmodem

These protocols receive any single file; after choosing one of these you are asked where to put the received file. The name you provide will be used unless a file with a MacBinary header is received, or a file with a Binary II header is received and the “Binary II Down” option is on. In those two cases the name that is enclosed in the header will be used.

Ymodem Batch, Ymodem-g

These protocols receive one or more files; after choosing one of these you are asked where to put the received file (the name is ignored, but must be valid in order for the dialog box to be accepted).

Zmodem

This protocol receives one or more files. After choosing Receive Zmodem the file transfer occurs automatically and the received file is stored in the file transfer folder. *NOTE: If the Auto Receive option is checked (File Transfer Settings dialog box), Zmodem transfers are started automatically so you won't have to choose this option.*

Capture

Shortcut:  = (equal)

Choose Capture to turn the capturing option on and off (a checkmark appears to the left of the menu item when Capture is on).

When Capture is not checked (off), text is not captured. When Capture is checked (on), text is stored either in the capture buffer or the capture file (if a checkmark appears to the left of the Capture To File option).

NOTE: If you want complete manual control over the capture option, be sure the Auto Buffer Control option is not checked (Online Display Settings dialog box). If checked, the host is able to control capturing...but only when the Capture option is off. This means that if you want data to be captured it definitely will be, but when you turn off the Capture option the host might still cause capturing to occur.

To the right of the menu bar is a thermometer that shows the current status of the capture buffer. The background of the thermometer is either green (the capture buffer is on) or white (the capture buffer is off). As the capture buffer fills, the thermometer fills with black.

If the capture buffer completely fills, Spectrum will ask whether you want to clear it, save it to a new file, or append it to an existing file.



The “capture buffer is full” dialog box

Clear erases the contents of the capture buffer. **Save** lets you specify the name and location of a new file to save. **Append** lets you select an existing text file to append to.

The Save and Append options both include a “Keep appending if buffer fills” checkbox that determines what happens the next time the buffer fills. If the option is not checked then you will again be asked whether you want to Clear, Save, or Append it.

If that option is checked, new data will be appended automatically to the end of the same file with no further response from you. *NOTE: Once this option is specified it stays in effect until you quit Spectrum, or run a script which includes a “Set AutoSaveBuffer Off” command.*

Clear Capture Buffer

Choose Clear Capture Buffer to empty the capture buffer. Because captured text will no longer be available, Spectrum asks you to confirm your choice.

Capture To File

At times it might be useful to capture text directly to a file on disk instead of into memory. Highlighting Capture To File opens a sub-menu that contains two options: **New File** asks you to specify the name and location of a new file to begin capturing into. **Existing File** asks you to select an existing text file to append onto.

While capturing text to a disk file the “Capture To File” menu item is renamed to “Close Capture File.” Choose Close Capture File to close the disk file and resume capturing to memory. *NOTE: Text is captured only if the Capture menu item is also checked.*

Page Setup

Choose Page Setup to present the chosen printer driver’s Page Setup dialog box.

The Page Setup dialog box typically lets you specify information about the paper size and orientation you want to use (specific options depend upon which printer driver is selected). If there is a “Vertical Condense” option, the best quality print will be achieved if the option is checked.

Print

Shortcut:  P

Choose Print to print the contents of the frontmost window. The chosen printer driver’s Print dialog box appears, which typically lets you specify the number of copies, page range, quality, and so on (the actual choices depend upon which printer driver you are using). After specifying the options you desire, click OK and the text will be printed.

NOTE: Printing from a IIgs application can be slow, so it is recommended that you only print while offline. Using the Express printer spooler will help you regain control of the computer sooner, and you may even find it quick enough to accomplish small print jobs while online.

Launch

Choose Launch to quit Spectrum and directly launch another GS/OS program. There are two options when launching an application:



A portion of the Launch dialog box

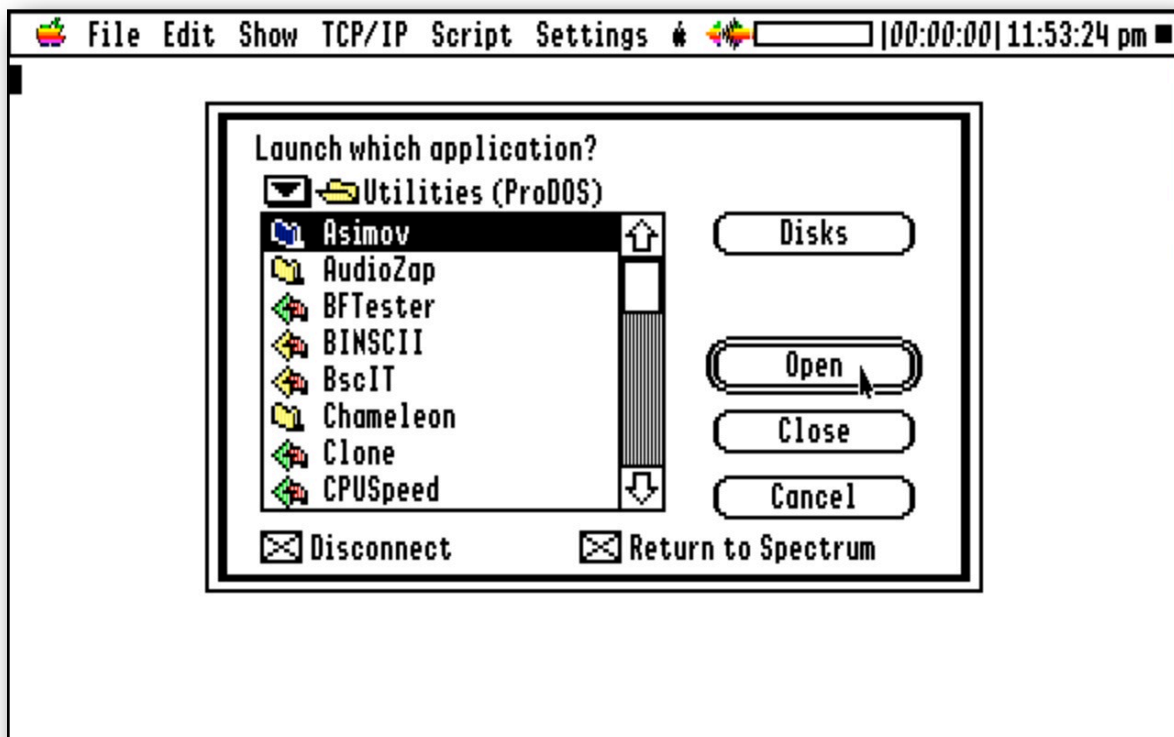
Hangup: When checked Spectrum will hang up before launching (if the modem stays connected, your online charges will continue to accrue). Uncheck this option only if you want to stay connected while you use some other application.

Return to Spectrum: When checked, quitting from the program you launched will restart Spectrum. If you don't want to automatically return to Spectrum after using the program you're launching, uncheck this option.

Quit

Shortcut:  Q

Choose Quit to stop using Spectrum and return to the launching program. If the editor text and/or capture buffer has not been saved, you will be asked if you want to save the text before quitting.



Edit Menu

Undo

Shortcut: ⌘ Z

Undo is not used in Spectrum, but is available for use by desk accessories.

Cut

Shortcut: ⌘ X

When the editor window is frontmost, choose Cut to cut the highlighted text and save it on the system clipboard.

Copy

Shortcut: ⌘ C

When any window is frontmost, choose Copy to copy the highlighted text to the system clipboard.

Paste

Shortcut: ⌘ V

When the editor window is frontmost, choose Paste to paste the text stored on the system clipboard at the text insertion point. If text is highlighted, the pasted text will replace the highlighted text. *NOTE: When the online display is frontmost choosing Paste is the same as choosing Send Clipboard To Modem.*

Clear

When the editor window is frontmost, choose Clear to delete the highlighted text without placing it on the system clipboard (text removed in this manner cannot be pasted later). *NOTE: When text is highlighted, pressing Delete on the keyboard is just like choosing Clear from the Edit menu.*

Select All

Shortcut: ⌘ A

When any window is frontmost, choose Select All to highlight all the text in the window.

Paste as Reply

Shortcut: ⌘ ' (single quote)

While in the editor, choose Paste as Reply to format and paste the clipboard contents as a reply. This useful if you are replying to a message and wish to quote some of the original text. *TIP: Highlight text and press ⌘ C then ⌘ ' to quickly convert the highlighted text into reply format.*

For example, if you receive this letter:

```
Chris,  
When does your upcoming vacation end?  
--Pat
```

You could copy the question, start a new document, then press  and type your response:

```
>> Chris,  
>> When does your upcoming vacation end?  
I'll be back in the office next Wednesday!
```


Send Clipboard To Modem / Send Selection To Modem

Shortcut:  M

Choose **Send Clipboard To Modem** to send the text stored on the system clipboard to the modem, just as if you had typed the text.

If you highlight some text in the editor, capture buffer, or scrollback window this menu item changes to say **Send Selection To Modem**, and choosing it will send just the highlighted text to the modem, just as if you had typed the text.

Append Selection To Editor

Shortcut:  ; (semicolon)

If you highlight some text in the editor, capture buffer, or scrollback window you can choose Append Selection To Editor to append the highlighted text onto the end of the editor document. *TIP: You can append the selection using the “reply” format (see “Paste As Reply” above), by holding down the Shift key before choosing Append Selection To Editor.*

Choose Font

Shortcut:  Y

Select Choose Font to change the font, size, or style of text used in Spectrum.

When no window is open, changing the font sets the default font that is used in the editor, capture buffer, scrollback, and clipboard windows (normally Spectrum 8; a special font that is available only while Spectrum is running).

When the editor window is frontmost, changing the font affects just the highlighted text. If no text is highlighted (i.e. the text insertion point is blinking) the new font will appear when you begin typing (unless you move the text insertion point before you begin typing).

When the capture buffer, scrollback, or clipboard window is frontmost, changing the font affects the entire contents of that window.

Text Color

Choose Text Color to change to the foreground and/or background color of text used in the editor. *NOTE: Color only affects the color of the text within the editor—sending the text will only show black and white.*



The Text Color dialog box

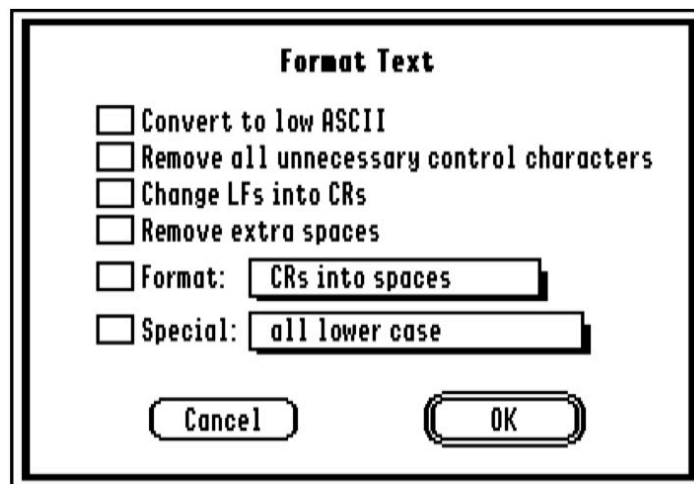
Choosing colors immediately changes the color of the highlighted text. If no text is highlighted (i.e. the text insertion point is blinking) the new color will appear when you begin typing (unless you move the text insertion point before you begin typing).

Choose Close from the File menu (or click the close box) when you are finished changing text colors. *TIP: Don't close the Text Color window if you want to change colors of different parts of the text. Instead, use the mouse to highlight the text and when you release the mouse button the Text Color window will come to the front automatically.*

Format Text

Shortcut: ⌘ K

Choose Format Text to apply special options to the text in the editor. This option is dim unless text is highlighted in the window, and the options affect only the highlighted text.



The Format Text dialog box

Attempting to apply some of these options results in a message that says, “Formatting will lose text styles. Continue?” If you don’t mind losing things such as font, size, style, and text color then click Yes; otherwise click No and format the text manually.

Checking **Convert To Low ASCII** will convert high ASCII characters (used in some programs) to low ASCII characters (the standard keyboard characters) by removing the “high bit.” High ASCII characters appear in the editor window as “special” characters like π, ®, ™, and so on.

Sometimes these characters are meant to be there (e.g. “2π”) but if you load a file that consists only of these special characters, apply this option to convert them to standard keyboard characters.

Checking **Remove All Unnecessary Control Characters** will remove all control characters except Tabs, Carriage Returns, and Line Feeds. If a Backspace character (\$08) is removed, the one preceding character is also removed.

Checking **Change LFs Into CRs** changes all Carriage Return/Line Feed combinations into a Carriage Return, and changes standalone Line Feed characters into Carriage Return characters.

Checking **Remove Extra Spaces** replaces two or more consecutive Space characters with only a single Space, and removes spaces before a Carriage Return.

The **Format** popup menu contains the following choices:

- *CRs Into Spaces*: Every Return is changed into a Space.
- *Add Line Feeds*: Every Return is changed into a Carriage Return/Line Feed combination that is needed by some systems.
- *Lines Into Paragraphs*: Converts text from line mode (a Return at the end of every line) to paragraph mode (a Return only at the end of a paragraph). To preserve the format of most menus received from online services, lines shorter than 35 characters are left as single lines.
- *Paragraphs Into Lines*: Converts text from paragraph mode (a Return only at the end of a paragraph) to line mode (a Return at the end of every line).

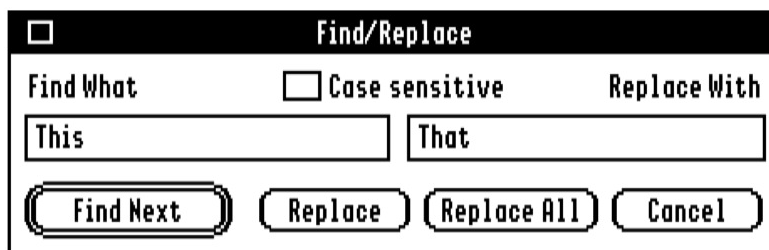
The **Special** popup menu contains the following choices:

- *all lower case*: Changes every letter into lower case.
- *ALL UPPER CASE*: Changes every letter into upper case.
- *All Proper Names*: Capitalizes the first letter of every word.
- *Capitalize Sentences*: Capitalizes the first letter of every sentence.
- *Convert Viewdata To Text*: If you’ve captured data from a Viewdata system, the actual text in the capture buffer contains all the Viewdata formatting codes. Choose this option to strip the Viewdata formatting information so only the text remains.

Find/Replace

Shortcut: ⌘ F

Choose Find/Replace to find and replace text.



The Find/Replace window

Type the text you want to find in the Find What box. If you want to replace the text, type the new text in the Replace With box.

Click **Find Next** to find the next occurrence of the text you specified. The search begins at the text insertion point, or at the end of any highlighted text. When the end of the text is reached you are told that the text was not found, and are given the choice to continue checking at the beginning of the text (if you’ve already checked all of the text, click No).

Click **Replace** to replace the highlighted text with the text you typed in the Replace With box. Clicking Replace will replace the text, then automatically click the Find Next button.

Click **Replace All** to replace all the occurrences of the Find What text to the new text in the Replace With box. If you didn't start replacing from the beginning of the document, when the bottom of the document is reached you are asked if you want to continue from the beginning. If so, click Yes, otherwise click No.

Click **Cancel**, or click the close box, to close the Find/Replace window.

Options

The **Case Sensitive** option determines whether capitalization of the Find What text is important. When checked, searching for "first" would not find "First."


You can search for **control characters** by using a caret (^) and the letter of the control character (e.g. look for ^m to find all Return characters). To search for an actual caret character, use ^^.

Show Menu

Online Display

Shortcut:  G

Choose Online Display to open the online display. Some displays appear on the standard 640 mode graphic screen with a menu bar; other displays hide the menu bar and/or display using some other screen mode (e.g. 320 mode graphic screen, 80 column text screen, etc.).

If you are using an online display that does not provide access to the File menu, press  W to close the online display and return to the standard desktop. **You must return to the desktop whenever you need to access the menu bar (e.g. to manually send or receive a file).**

Editor

Shortcut:  E

Choose Editor to display Spectrum's text editor. The full-featured editor supports all the standard IIgs text editing features (cut, copy, paste, arrow keys for movement, fonts, sizes, styles, and so on), as well as changing text color. The only length limitation is the amount of memory available. *NOTE: See the "Choose Font" option for information on setting the default font that is used in the editor.*

The editor's contents are constant; when you close the editor window the window is just hidden and the contents are preserved. This ability lets you keep text in the editor while you are online; you can make notes in the editor or compose a message reply that can be sent using the "Send Editor Text" command.

To save the editor's contents, choose Save or Save As from the File menu. If an action would clear the editor (e.g. choosing New or Open Editor Document from the File menu) you will be asked if you want to save first.

Capture Buffer

Choose Capture Buffer to display the capture buffer window. This menu item is dim if the capture buffer is empty.

For more information about the capture buffer, see the "Capture" item in the "File Menu" section.

Scrollback

Shortcut: ⌘ \ (backslash)

Choose Scrollback to display the scrollback window. This menu item is dim if the scrollback buffer is empty.

The scrollback lets you review the last xK of information that was received recently. It is different from the capture buffer in three important ways:

- It always accumulates text (it cannot be turned off, except by changing the scrollback buffer size to “None”).
- It always shows up to the last xK of information (it can only be cleared by quitting Spectrum, or by choosing Scrollback from the Show menu, then choosing Clear Scrollback from the File menu).
- When quitting Spectrum you are not warned if the scrollback buffer has not been saved.

Clipboard

Choose Clipboard to display the clipboard window. The clipboard contains whatever was last cut or copied.

Chat Line

Shortcut: ⌘ ` (accent, or the tilde (~) key)

Choose Chat Line to turn the chat line feature on and off. *NOTE: Some online displays do not support a chat line.*

When a chat line is supported, the screen is divided into two sections: the top of the screen displays incoming data, and a small area at the bottom of the screen is used for composing a line of text.

Regular text you type into the chat line is not transmitted to the host until you press Return. Most control characters (all except ^H and ^X) are transmitted immediately. *NOTE: ^H is like pressing the Delete key (it backspaces one letter); ^X is like pressing Clear on the numeric keypad (it erases all the text in the chat line). If the chat line is empty, pressing ^X will be transmitted immediately.*

The chat line is useful during online conferences or when “chatting” with another system because incoming data is displayed in a separate area. Without a chat line, incoming data would be intermixed with what you are typing. It is also useful when learning a script, or when line noise interrupts your typing (you can type without regard for any incoming “garbage” characters).

You can Paste (⌘ V) text from the clipboard into the chat line, and you can “play” FKeys (⌘ #) into the chat line. Scripts that display or transmit information can be run, but that information bypasses the chat line.

Status Line

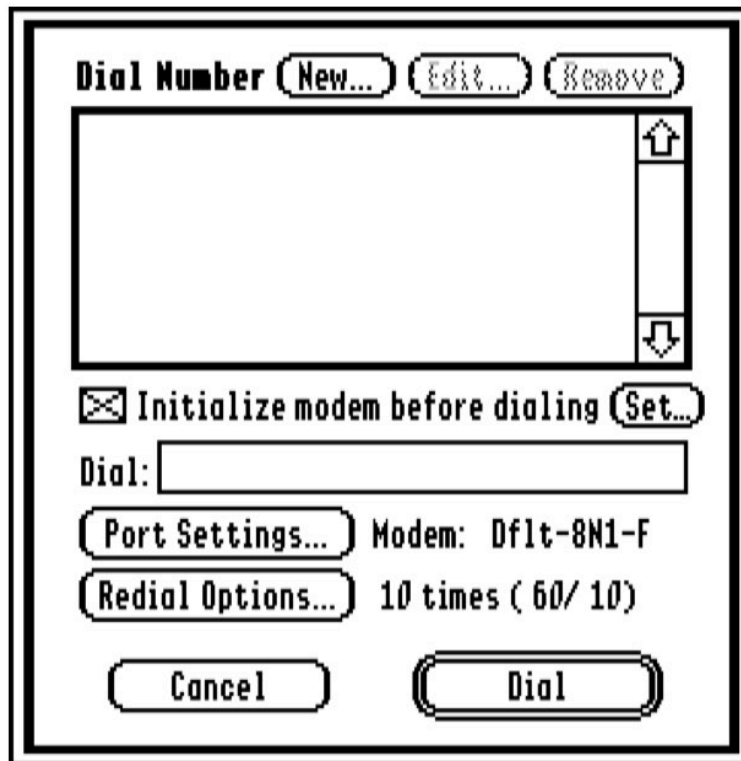
Shortcut: ⌘ Spacebar

Choose Status Line to turn the status line feature on and off. *NOTE: Some online displays do not support a status line.*

Phone Menu

Dial Number

Shortcut: ⌘ D

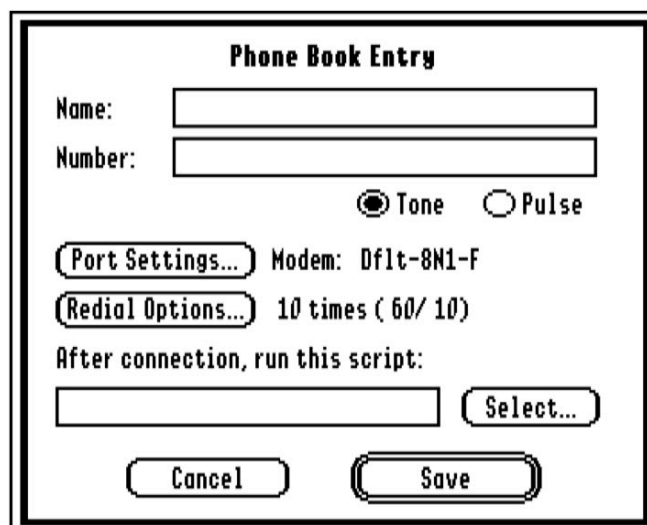


The Dial Number dialog box

Choose Dial Number to dial a number or create phonebook entries of the systems you call.

Phonebook Entries

Click New to create a new phonebook entry; to edit an existing entry highlight it then click Edit.



The Add/Edit Phonebook Entry dialog box

Up to 32 phonebook entries can be created. Each phonebook entry remembers everything you need to connect to a system: its name, number, port settings, and redial options. Because a specific online display is not required in order to connect to a system it is not remembered, however a logon script can open the appropriate display.

Each entry can also remember the name of a script to run after making a connection. **Note that only the name of the script is remembered—its location is not!** In order for the proper script to be run, a menu file must have been loaded from the proper folder before dialing (loading a menu file establishes the location from which the logon script will be run). For example, imagine you have these two folders:

CompuServe:	GEnie:
Logon	Logon
Menu.File	Menu.File
...other CIS scripts...	...other GEnie scripts...

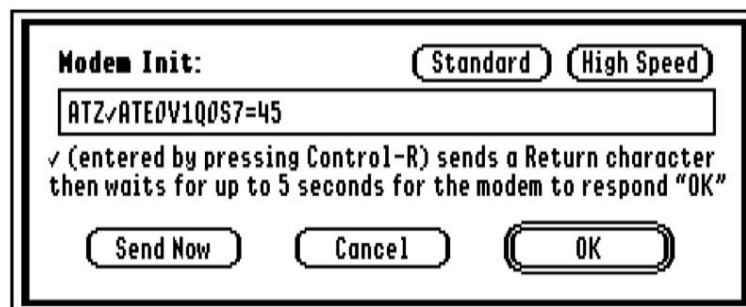
Both your CompuServe and GEnie phonebook entries indicate that the “Logon” script should be run after connection. Before dialing CompuServe, load the menu file from the CompuServe folder. Likewise, before dialing GEnie load the menu file from the GEnie folder.

Initialize Modem Before Dialing

This checkbox determines whether the “modem init string” is sent to the modem before dialing. The modem init string is a series of commands which prepare the modem for dialing.

After the modem has been initialized, it will not need to be re-initialized for the rest of the session (unless the modem is turned off or reset). Therefore, at program startup the “Initialize Modem Before Dialing” option is automatically checked, and after the modem initialization string has been sent successfully the option is automatically unchecked.

To change the modem init string, click the “Set” button. *NOTE: The default modem init string is satisfactory for most situations; do not change it unless you have identified a special need (e.g. to instruct the modem to use hardware handshaking).*



The Set Modem Initialization String dialog box

There are two default modem init strings. The “Standard” init string is “ATZ√ATE0V1Q0 S7=45” which does the following:

- AT Gets the modem’s attention (begins all modem commands).
- Z Tells the modem to restore its default settings.
- √ This special character (entered by typing Control-R) is not a modem command—it instructs Spectrum to send a Return character then wait up to 5 seconds for the modem to respond “OK.”
- AT Gets the modem’s attention (begins all modem commands).
- E0 Tells the modem not to echo commands that Spectrum sends.
- V1 Tells the modem to respond using “Hayes verbal result codes.”
- Q0 Tells the modem to send its result codes.
- S7=45 Tells the modem to wait up to 45 seconds for carrier detect.

The “High Speed” init string adds “&K3&D0\N3%C0&C1” to the Standard init. Those commands do the following:

- &K3 Tells the modem to enable hardware flow control.
- &D0 Tells the modem to ignore the DTR signal.
- \N3 Tells the modem to establish an “auto reliable” connection (a high end modem typically tries to establish a v.42bis connection, then v.42, then MNP, etc.).
- %C0 Tells the modem to disable data compression (when sending files that have already been compressed, data compression in the modem can slow down the transfer).
- &C1 Tells the modem to make the DCD line reflect the true online state.

After sending the complete modem init string, Spectrum sends a Return character then waits up to 5 seconds for the modem to respond “OK.” If the modem does not respond then a “modem not responding” message is displayed, otherwise a “Dialing” message is displayed and the phone number entry is sent.

Dialing

To dial a phonebook entry, highlight it and click the Dial button. As a shortcut you can double-click the entry.

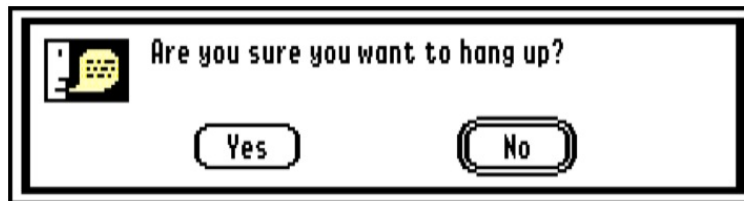
To manually dial a system, type the number in the Dial box, change the Port Settings and Redial Options if necessary, then click Dial. *TIP: If an existing phonebook entry has the port settings and redial options you need, click on the phonebook entry. When you do, the entry's options are displayed. You can then change the phone number and click Dial.*

A dialog box provides information as Spectrum dials the number and waits for a connection.

Hangup

Shortcut:  H

Choose Hangup to hang up the modem. If the “DCD Is Valid” option is checked in the port settings dialog box, and DCD is already false, then no hangup is done. Otherwise Spectrum asks if you are sure you want to hang up.



The Hangup dialog box

Click Yes and the modem will be hung up. *NOTE: If the Hangup option is dim but the modem is **not** hung up, uncheck the “DCD Is Valid” option in the Port Settings dialog box, then try again.*

Send Break

Shortcut:  B

Choose Send Break to send a break signal to the host. A break is not a character that can be output or typed at the keyboard; it is a special signal supported by most modems.

The break signal is sometimes called an “attention” signal. Some hosts use Control-C to mean “attention,” and some provide a way for you to define what the “attention” signal is (either a true “break” or some character that can be typed at the keyboard). Use the Send Break command if the host you are connected to requires a true “break” signal.

Start Timer / Stop Timer

Shortcut: ⌘ , (comma)

Choose Start Timer or Stop Timer to start and stop the online timer. The timer is cleared and started automatically when you connect to a system when using the “Dial Number” option on the Phone menu. The timer is stopped automatically after choosing “Hangup” from the Phone menu.

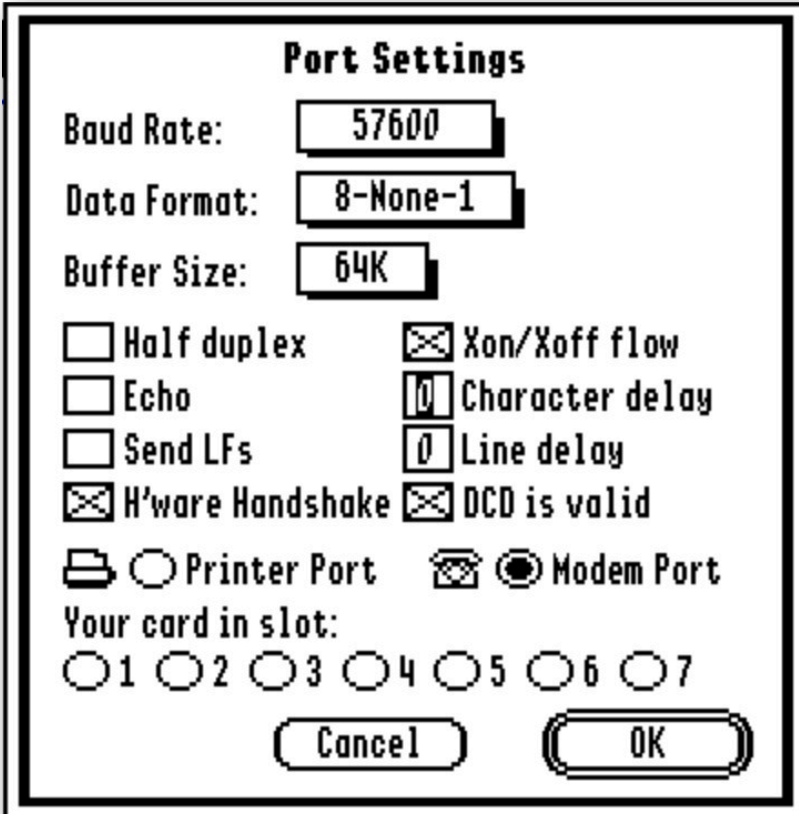
Clear Timer

Choose Clear Timer to reset the online timer to 00:00:00. Clearing the timer does not turn the timer on or off; see Start Timer / Stop Timer.

Answer Back

Choose Answer Back to run a script named Spectrum.Host, located in the Spectrum.Script folder. If Spectrum.Host is not found then a dialog box appears from which you can select a script to run (just as if you had chosen Run A Script from the Script menu).

Answer Back is merely a quick way to run the Spectrum.Host script; it does nothing more. The Spectrum.Host script normally would be a script to answer the modem or run a bulletin board, but it could be anything you like. A simple Spectrum.Host script is provided with Spectrum.



The image shows a 'Port Settings' dialog box with the following controls:

- Baud Rate:** A text field containing '57600'.
- Data Format:** A text field containing '8-None-1'.
- Buffer Size:** A text field containing '64K'.
- Half duplex:** An unchecked checkbox.
- Echo:** An unchecked checkbox.
- Send LFs:** An unchecked checkbox.
- H'ware Handshake:** A checked checkbox.
- Xon/Xoff flow:** A checked checkbox.
- Character delay:** A text field containing '0'.
- Line delay:** A text field containing '0'.
- DCD is valid:** A checked checkbox.
- Printer Port:** A radio button next to a printer icon.
- Modem Port:** A checked radio button next to a modem icon.
- Your card in slot:** A label above seven radio buttons numbered 1 through 7.
- Buttons:** 'Cancel' and 'OK' buttons at the bottom.

Script Menu

Learn A Script

Shortcut:  L

Choose Learn A Script to record almost any series of steps you do with Spectrum. This option is commonly used to learn a logon script, but it can be used to learn other tasks such as reading mail, changing online display settings, and so on.

Choose Learn A Script just before you want Spectrum to start remembering the things you do. Specify the name and location for the learned script, then click Save. After clicking Save, nearly everything you do will be remembered in the script file.

For example, you might choose Dial Number then dial a phonebook entry named “Local BBS.” After the connection is made you log into the system just as you always have. You might even respond to options the system gives you.

When you are done learning the script, choose Learn A Script again, which removes the checkmark and saves the script file. If you followed the example above, the script file might look something like this:

```
Dial Service "Local BBS"
WaitFor String "Name?"
Transmit "Chris Smith^M"
WaitFor String "Password?"
Transmit "SecretWord^M"
WaitFor String "choice:"
Transmit "R^M"
```

To repeat the steps you learned, just run the script. In the example above, Spectrum will dial a phonebook entry named “Local BBS” and after the connection is made it will log into the system and respond to an option the system provides.

Learning a script is not limited to just logon steps. For example, if you turn on the chat line that step will be recorded; if you start, stop, or clear the timer those steps will be recorded; if you change some online display options that will be recorded; and so on.

Learned scripts can perform *many* tasks (for example, change the port to 2400 baud, open the Spectrum Text display, set the file transfer directory to a certain location, load a menu file from another location, log onto a system, turn the chat line on, and so on).

Limitations Of Learned Scripts

Spectrum cannot automatically learn how to do things conditionally (e.g. only read the mail if there is mail waiting).

Line noise can interfere with a learned script because Spectrum learns every incoming character. For example, if a system sends a message “What is your password?” but line noise interferes, Spectrum might learn to wait for a string called “passw@r#d?”. The next time you log on, “passw@r#d” would not be seen, so the script would not proceed.

Character echo and duplex can cause “odd” statements to be recorded into the script. For example, you type “Secret” but the script records:

```
Transmit "Sec"
WaitFor String "Sec"
Transmit "ret^M"
```

These limitations can be overcome by editing the script. For example, to clear up the line noise problem you just have to change the “WaitFor String” command to wait for the proper word. *TIP: Turning on the Chat Line before learning the script can also help.*

To learn about writing and editing scripts, refer to the Spectrum Scripting manual. Don't be intimidated by the size of the scripting manual...it indicates the robustness of Spectrum's script commands, not the complexity!

Run A Script

Shortcut: ⌘ R

Choose Run A Script to run a script. A dialog box appears in which you can select the script to run. This dialog box always initially shows the folder from which the menu file was loaded (or the Spectrum.Script folder if no menu file has been loaded).

Spectrum loads the selected file into memory and begins interpreting the information in that file. If the file contains valid script commands then Spectrum carries out those commands. If an unrecognized command is encountered, Spectrum stops and displays an error message. While a script is running, a black box appears at the upper-right corner of the menu bar.

When a script is running, the Run A Script menu item changes to become “Stop Script.” To stop a script choose Stop Script from the Script menu, or press Escape. *NOTE: Some script commands temporarily block the use of the menu bar; if one method does not work, try another.*

Rerun Script In Memory

Shortcut: ⌘ * (asterisk)

To rerun the last script that was run, choose Rerun Script In Memory. Choosing this command when a script is already running will restart the script from the beginning.

Run Editor As Script

Shortcut: ⌘ – (dash)

Choose Run Editor As Script to run the current contents of the editor as a script. This command is very useful when writing or modifying a script because after loading a script into the editor you can make modifications, run the editor as a script, make more changes, run the editor as a script, and so on. That development cycle is much faster than having to save the editor to disk before it can be run.

Load Menu File

Choose Load Menu File to load a text file of script descriptions to be appended to the Script menu.

Loading a menu file serves two important purposes. First, it determines which folder is initially displayed when you choose Run A Script. This feature lets you store groups of related scripts in separate folders. For example, all the scripts you use for CompuServe can be stored in a “CompuServe” folder, and all the scripts for GENie can be stored in a “GENie” folder.

When you want to use the CompuServe scripts you would load a menu file located in the CompuServe folder. From then on, choosing Run A Script will initially show you the scripts in that folder. Likewise, when you want to use the GENie scripts you would load a menu file located in the GENie folder.

Second, it provides a way for you to run scripts simply by choosing them from the Script menu (completely bypassing the Run A Script dialog box). For example, a menu file might contain the following text:

```
C CompuServe Menu
G GEnie Menu
```

When that menu file is loaded, the Script menu will look like this:

The natural question is, “How does Spectrum know which script to run when a particular menu item is chosen?” The answer has to do with the letter that is shown on the menu.

When you choose “ C CompuServe Menu” from the Script menu, Spectrum attempts to run a script named “C”. If Spectrum cannot find a script named “C” it then searches for a script that begins with “C.” (C period). The first match it finds will be run (nothing happens if the script is not found). *REMEMBER: Spectrum looks in the folder that the menu file was loaded from.*



The Script menu with a menu file loaded

Therefore, you can name the file “C” or “C.CIS.Menu” or “C.anything” and it will be run when you choose “ C CompuServe Menu” from the Script menu (provided it is stored in the same folder as the menu file that was last loaded).

Thanks to this script file naming convention, you also have the ability to run scripts directly from the keyboard! The symbol on the menu indicates the Option key on the keyboard. That means pressing C (that’s Option-C, **not** C which is Command-C) will run the script named “C” (or “C.anything”)! *NOTE: In order for this to work, the “Recognize script keys” option must be checked in the Online Display Settings dialog box.*

Menu File Format

Although a menu file can be named anything on disk, the contents of the menu file is special: Each menu item must be listed on a separate line, in the order you want them to appear. For each menu item, type the letter of the script, press the Spacebar, then type the name of the item as you want it to appear on the Script menu, then press Return. For example,

```
A About these scripts
L Logon
M Check Mail
F Find a user
```

When loading a menu file, take care to only load text files that follow this format (loading your shopping list will produce odd results at the end of the Script menu).

A menu file can list none, some, or all the scripts available in a folder. In fact, a menu file can even list scripts that don’t actually exist. As far as Spectrum is concerned, a menu file is simply a list of letters with descriptions to add to the end of the Script menu.

Loading an empty menu file removes the menu file entries from the Script menu, and establishes the folder that Spectrum looks in when SomeLetter is pressed.

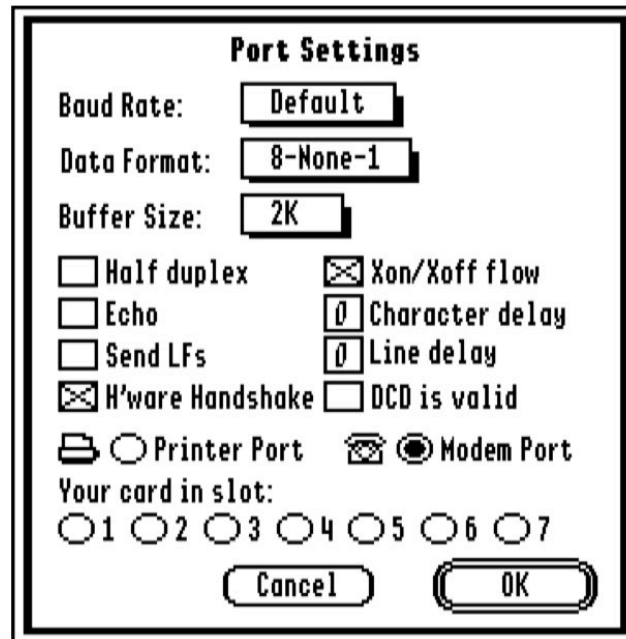
Clear Menu File

Choose Clear Menu File to remove all entries listed below this menu item, and to reset the scripts folder back to “Spectrum.Script” in the same folder as the Spectrum application.

Settings Menu

Port

Choose Port from the Settings menu to change the communications port and its settings.



The Port Settings dialog box

Baud Rate: The baud rate is the speed at which the communications port talks to the modem (it is not necessarily the same speed at which the modem talks to the host). The “Default” choice uses the baud rate specified in the Control Panel (if Printer Port is selected then the printer port’s baud rate is used; if Modem Port or any slot number is selected then the modem port’s baud rate is used).

Data Format: The data format consists of a number of data bits, parity, and stop bits. For completeness there are many possible combinations that can be selected. In practice, however, you will probably use only the “8 bits, no parity, 1 stop bit” option.

Data bits indicates the size of each character in a transmission. Parity is an old form of error checking that is seldom used today. Stop bits signal that a character has been transmitted. The commonly-used “8-None-1” option recognizes most hosts, and it must be used in order to use any of the file transfer protocols. It even recognizes hosts who are sending to you using a 7-Even-2 data format, although you may end up with unreadable “high ASCII” characters on the screen (if this happens, check the “Convert To Low ASCII” option in the Online Display Settings dialog box to fix the characters as they are received).

Buffer Size: This option determines the size of Spectrum’s internal port buffer. All incoming data is seen by a special “port driver” which quickly places any incoming characters into the port buffer (this occurs even when you’re using Spectrum for other things, such as typing in the editor). The larger this buffer, the more data can be received before the port driver must tell the host to stop sending data.

A 2K buffer is usually sufficient, but if you communicate at a high baud rate (9,600 or higher), or if you have spare memory you don’t mind using, consider increasing the port buffer size.

Half Duplex: When checked, outgoing data is sent to the port and the online display; when not checked (meaning full duplex) outgoing data is sent only to the port and characters will appear on the screen only if the host echos them back to Spectrum.

Echo: When checked, incoming data is sent back out the port as it is processed. Echo is sometimes used when you are acting like a bulletin board or you connect with other Spectrum users. In this case, one end becomes the host. The host would have Half Duplex and Echo on, and the other end would use full duplex. *NOTE: If Echo is on and the host echoes characters back to you, you may find yourself in a loop with the same characters constantly being echoed between the two systems. Turn echo off to stop the loop.*

Send LFs: When typing, pasting text, or sending a text file, this option appends a line feed character after each Return character. Line feeds are commonly used in the MS-DOS world; they are usually not required for Apple systems.

TIP: Leave this option off if you only need line feeds occasionally. When you need to send a text file with line feeds, open the file in the editor, choose Format Text from the Edit menu, apply the "Add Line Feeds" formatting option, then send the editor text.

H'ware Handshake: If your modem supports hardware handshaking, and you have a properly-wired modem cable (see Appendix A for cabling information) then check this option to use hardware handshaking to control the flow of data between your computer and modem.

NOTE: You may have to add commands to your "Modem Init" to instruct your modem to use hardware handshaking. For example, the SupraFAXModem requires the &K3 command to enable hardware flow control.

Xon/Xoff Flow: This option determines if Spectrum's port driver uses and recognizes Xon/Xoff characters to control the flow of data between your computer and the host. If the receiver can't keep up with the incoming data it tells the sender to wait. When the receiver is ready for more information it tells the sender to continue.

Xon/Xoff "software flow control" applies only to text transfers, and when you are receiving text to the online display. It is not used during file transfer protocols (e.g. Xmodem) because those protocols use their own form of software flow control.

Character Delay: When typing, pasting text, or sending a text file, this option determines the delay after each character is sent out the port. The value is in 1/60ths of a second (0 is no delay, 9 is a .15 second delay):

Value	Calculation	Seconds
0	$0 \times 1/60$	0
1	$1 \times 1/60$	0.02
2	$2 \times 1/60$	0.03
3	$3 \times 1/60$	0.05
4	$4 \times 1/60$	0.07

Value	Calculation	Seconds
5	$5 \times 1/60$	0.08
6	$6 \times 1/60$	0.10
7	$7 \times 1/60$	0.12
8	$8 \times 1/60$	0.13
9	$9 \times 1/60$	0.15

NOTE: Most hosts do not require a delay, but try increasing the character delay if a host has trouble recognizing commands sent from a script.

Line Delay: When typing, pasting text, or sending a text file, this option determines the delay after a Return character is sent out the port. The value is in 16/60ths of a second (0 is no delay; 9 is a 2.4 second delay):

Value	Calculation	Seconds
0	$0 \times 16/60$	0
1	$1 \times 16/60$	0.27
2	$2 \times 16/60$	0.53
3	$3 \times 16/60$	0.80
4	$4 \times 16/60$	1.07

Value	Calculation	Seconds
5	$5 \times 16/60$	1.33
6	$6 \times 16/60$	1.60
7	$7 \times 16/60$	1.87
8	$8 \times 16/60$	2.13
9	$9 \times 16/60$	2.40

NOTE: Most hosts do not require a delay, but if a host has trouble accepting your text file uploads, try increasing the line and/or character delays until you reach a speed the host can handle.

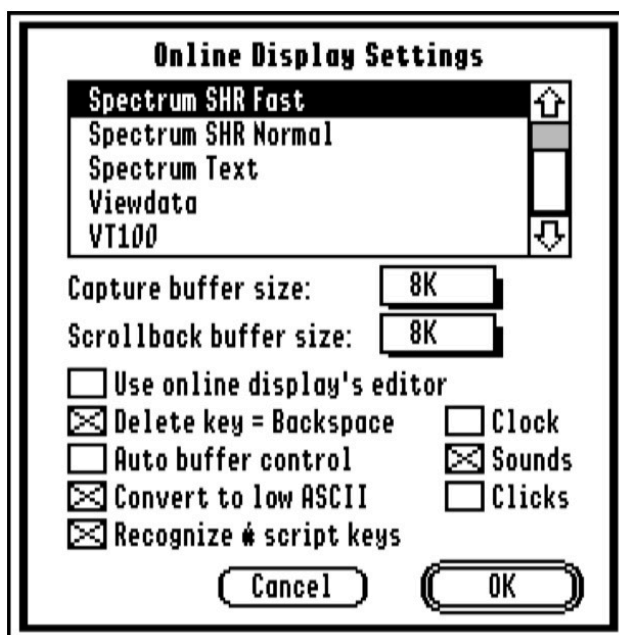
DCD Is Valid: DCD stands for “Data Carrier Detect.” If your modem properly controls the DCD signal, and you have a properly-wired modem cable (see Appendix A for cabling information) then check this option so Spectrum will know it can rely on the DCD signal to determine if you are connected to a remote system.

NOTE: You may have to add commands to your “Modem Init” to instruct your modem to properly control the DCD signal. For example, the SupraFAXModem requires the &C1 command before it will indicate whether a remote modem’s data carrier tone is present.

Printer Port/Modem Port/Your Card In Slot: If your modem is connected to one of the ports on the back of the IIgs, select the appropriate port. If your modem is connected to a Super Serial Card (or workalike) or to the AE DataLink modem (or workalike) then select the slot number. When you click OK the port/slot is checked and an error is displayed if the choice is not valid.

Online Display

Choose Online Display from the Settings menu to select an online display and change settings that affect them.



The Online Display Settings dialog box

The “Spectrum SHR Fast,” “Spectrum SHR Normal,” and “Spectrum Text” displays are built-in to Spectrum and are always available. Additional displays can be added by dropping them into Spectrum’s “Add.Ons” folder (complete information for each online display can be found on disk in Spectrum’s “Documentation” folder).

Capture Buffer Size: Use this popup menu to adjust the size of the capture buffer. Storing data into the capture buffer can be turned on and off by choosing Capture on the File menu. When the capture buffer fills to the specified size, Spectrum prompts you to save the capture buffer, clears it, then starts over. If the capture buffer size is set to None then no data will be stored in the capture buffer.

Scrollback Buffer Size: Use this popup menu to adjust the size of the scrollback buffer. The scrollback buffer is always active (the only way to turn it off is to set the scrollback buffer size to None). It remembers the last xK of information that was sent or received (it is a “true” record of incoming and outgoing text).

Use Online Display's Editor: Although the three built-in online displays do not include a special editor, other online displays might. By checking this option, the online display's custom editor (if one exists) will be used, otherwise Spectrum's built-in text editor will be used.

Delete Key = Backspace: When this option is checked, pressing the Delete key while typing in an online display will transmit the backspace character (\$08, ^H, left arrow) instead of the delete character (\$7F). Most hosts expect a backspace, so this option should normally be checked.

Auto Buffer Control: When checked, Spectrum watches for ^R and ^T character so it can track whether the host wants the capture buffer on or off (some hosts use those characters to control the downloading of text data). However, Spectrum will not honor the host's request unless the Capture option (on the File menu) is not checked. That is, if you want data to be captured it definitely will be; the host can control the capture status only if you have turned off the Capture option.

Convert To Low ASCII: When checked, the high bit of incoming data is removed in order to bring each character into the range of "normal" displayable characters. *NOTE: Some online displays (e.g. ANSI) require full 8-bit characters so they might override this setting.*

If you connect to a regular text-based system such as GEnie, this option should be checked in order to avoid seeing strange characters. However, if the host supports full 8-bit characters you can uncheck this option when you want to send a text file that contains foreign language or other "special" characters like curly quotes, π symbols, and so on.

Recognize ⌘ Script Keys: When checked and an online display is frontmost, pressing ⌘A (option-A) will attempt to run a script named A or A.anything (see the "Run a Script" section for more information). If the online display is closed you can run scripts only by using the Script menu.

If you want to type option characters (e.g. π, ©, ®) into an online display, close the online display (if open), then uncheck this option and the "Convert To Low ASCII" option. *NOTE: The "Translation" option (in the General Control Panel) must be set to something other than "None."*

Clock: Check this option to display a clock in the menu bar (and in the status bar of some online displays).

Sounds: Determines whether various Spectrum sounds are played (e.g. "Welcome to Spectrum," "Goodbye," and so on).

Clicks: Determines whether keyboard sounds are played while typing in an online display. *NOTE: Turn off this option if you type very fast.*

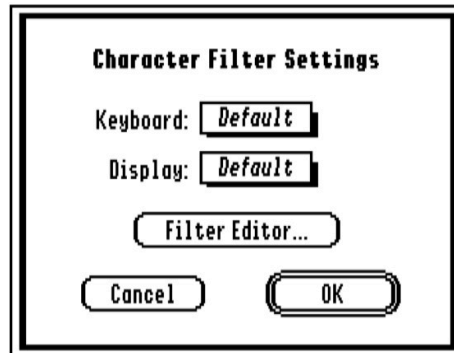
...More Display Options

Choose More Display Options from the Settings menu to change options that apply only to the current online display.

This menu item is usually dim because most online displays do not have special preferences; if the online display you are using does have special preferences, this menu item will be activated. Complete documentation for each online display can be found in the “Documentation” folder.

Character Filter

Choose Character Filter from the Settings menu to choose or create special keyboard and display filters. Filters are used to translate one character into another, or to completely remove a character.



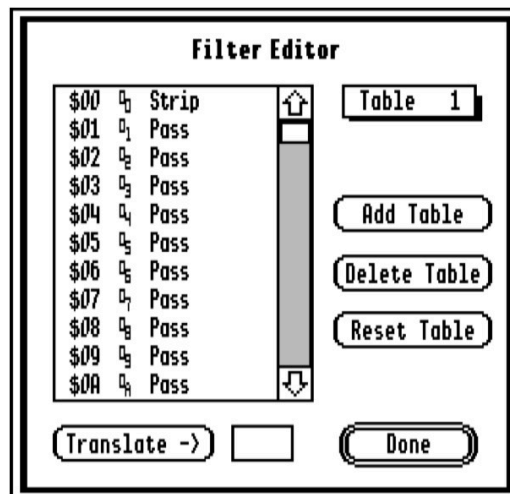
The Character Filter Settings dialog box

No filtering occurs during non-text protocol transfers (CIS B+, Xmodem, etc.). At all other times filtering does occur.

The **Keyboard** filter applies to outgoing text (typing in an online display, pasting text to the modem, sending a text file, and the Transmit script command). *NOTE: If the “Echo” option is checked in the Port Settings dialog box, text from the Display and DisplayRecord script commands is also run through the Keyboard filter.*

The **Display** filter applies to incoming text.

The “Default” filter means the General CDEV’s translation setting will be used. To add a new table, or to edit one that was previously added, click the Filter Editor button.



The Filter Editor dialog box

Click **Add Table** to add a new table. New tables always pass every character except character \$00, which is always stopped.

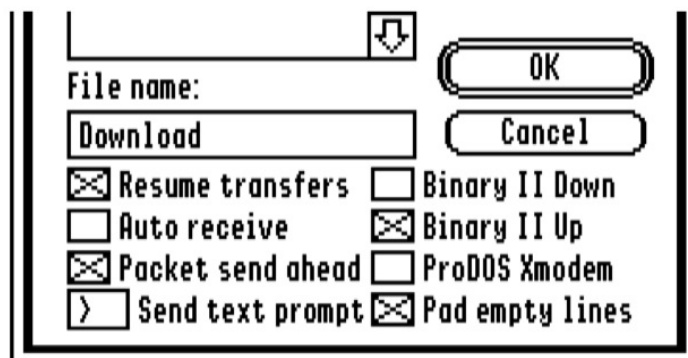
To edit, delete, or reset a table, choose the desired table from the popup menu in the upper right of the dialog box. Click **Delete Table** to delete the table, or click **Reset Table** to reset it to the default values (pass everything except \$00).

To edit the table, select a character then type the desired translation in the edit box. If the desired character is a regular letter available on the keyboard you can type the character, otherwise you can use *^letter* to indicate control characters, or the hexadecimal number (\$# or \$##). Finally, click the Translate button. For example:

- **To translate** the letter A into the letter Z, highlight “\$41 A Pass,” type Z (or \$5A), then click the Translate button.
- **To completely strip** the letter A, highlight “\$41 A,” type \$0, then click the Translate button.
- **To pass** the letter A as-is (no translation), highlight “\$41 A,” type A (or \$41), then click the Translate button.

File Transfer

Choose File Transfer from the Settings menu to select a folder for automatic file transfers and to set other file send/receive options. *NOTE: If possible, you should always receive files to a hard drive or RAM disk.*



A portion of the File Transfer Settings dialog box

Resume Transfers: When this option is checked, Spectrum does not delete partially-received files if the file transfer protocol supports resuming transfers (e.g. CompuServe B+, Zmodem). If you later start receiving the same filename to the same folder (using the same file transfer protocol), Spectrum will continue transferring the file from the point the transfer was aborted. *NOTE: This works only if the “Binary II Down” option is not checked.*

For example, you begin receiving a huge file via Zmodem protocol and 95% of the file is transferred when the host suddenly disconnects. If this option is not checked, the partial file is deleted and you’ll have to transfer the entire file again. But if Resume Transfers is checked (and you were not using Binary II Down) then only the remaining 5% will have to be transferred.

Auto Receive: When checked, Spectrum watches for special characters that indicate the host wants to send a file (typically in response to your request that a file be sent). If Spectrum sees the required characters it automatically begins receiving the file to the specified folder—you do not have to manually choose the appropriate protocol from the Receive File sub-menu. *NOTE: Auto Receive works only with the CompuServe B+ and Zmodem file transfer protocols.*

For example, if you instruct CompuServe to send a particular file via the CIS B+ protocol, CompuServe sends a ^E character. If Auto Receive is checked, Spectrum responds that it is ready to receive and CompuServe sends the file. If Auto Receive is not checked, you would have to manually choose CIS B+ from the Receive File sub-menu in order for Spectrum to respond). *NOTE: Because CompuServe’s CIS B+ inquiry command is a simple Control-E character, false auto-receives can be triggered by some hosts. If this happens, turn off the Auto Receive option for those hosts.*

Packet Send Ahead: Most file transfer protocols operate by sending a “packet” of data, waiting for a “received” response, then sending the next packet. When Packet Send Ahead is off, the protocols that work this way continue to do so. However, when the option is on, some protocols (e.g. CompuServe B+, Zmodem) can send additional packets without waiting for an acknowledgement, which can speed up file transfers.

This option should normally be on, but turn it off if you experience many file transfer errors when using a protocol that supports Packet Send Ahead.

Send Text Prompt: This is the character that is checked for when sending a text file using the Prompted option. Use the `^Letter` character to indicate a control character, or type a hexadecimal number. *NOTE: Enter `$3A` to represent a colon (:). Enter `^@` (or `$00`) to disable the Prompted option.*

Binary II Down: If this option is checked, as a file is received it will be examined. If the file has a Binary II header, the header will be stripped and the file will be saved with its correct file name, type, and format. See the “Transferring Files” section for more information about Binary II.

NOTE: If this option is checked, Resume Transfers will not work. If you are receiving Apple II or IIgs files you should leave this option unchecked and use ShrinkIt-GS to remove the Binary II wrapper.

Binary II Up: If this option is checked a Binary II header is added to each file being uploaded (see the “Transferring Files” section for more information about Binary II). If the file already has a Binary II header then a second one is *not* added.

ProDOS Xmodem: If this option is checked, Spectrum adds the ProDOS Xmodem extension to any Xmodem file transfer. This option only controls sending files; Spectrum automatically detects whether received files have the ProDOS Xmodem extension.

Pad Empty Lines: Some hosts use a blank line to indicate the end of a text message. If this option is checked, when you send a text file that contains empty lines (lines with only a Return), those empty lines are padded so the host actually receives “Space Return”, which prevents the host from thinking the message is finished being sent. After a text file has been sent with this option on, you may need to press Return once or twice to tell the host the message is complete.

Save Settings

Choose Save Settings to remember *all* of Spectrum’s current settings. Settings are automatically saved when you quit (unless you have checked the “Don’t save setting changes” option in the Status dialog box).

All settings (including your phonebook entries) are stored in the Spectrum.Prefs file, which is located either in the `*:System:Preferences` folder on a standalone computer, or in your AppleShare folder. Delete this preference file if you want to restore all the default settings.

Load Settings

Choose Load Settings to restore all the options that were in effect when you last chose Save Settings.

Status

Choose Status to display information about some current Spectrum settings.



The Status dialog box

The Buffer Used value shows how many characters are currently stored in the capture buffer.

Normally all of Spectrum's settings are saved automatically when you quit. Click the Don't Save Setting Changes option if you prefer to manually control when settings are saved (by choosing Save Settings).

Transferring Files

A primary use of modem communications is to transfer files from one computer to another. This section discusses various aspects relating to transferring files from one computer to another

General Tips

When receiving files, save to a RAM disk or a hard disk drive. Devices that shut off interrupts for a “long” time (e.g. floppy disk drives) can cause lost data if data arrives while disk activity is occurring.

If you must save to a floppy disk drive:

- turn off the “Packet Send Ahead” file transfer option
- use protocols that send a packet and wait for an acknowledgement before sending more information (e.g. all non-text protocols if the “Packet Send Ahead” option is off)
- don’t use a protocol that can’t recover from an error (e.g. Ymodem-g)
- use hardware handshaking

Do not move the mouse during transfers. Moving the mouse interrupts the computer. This causes the file transfer to slow down, and can also cause lost characters (and therefore errors) when receiving a file.

Do not use system extensions that cause or use interrupts. If you have trouble with dropped/missing/lost characters when communicating with Spectrum, or file transfers are slower than they should be, be sure to read the “Check Your System Extensions” section in this manual.

Use a compression program such as ShrinkIt-GS before sending files. Not only does this decrease the transfer time, but it also preserves file information (name, type, dates, etc.).

Do not use “data compression” if your modem supports it. The *only* possible exception to this is if you are using a V.32bis modem and have made a V.42bis connection, in which case the modem’s data compression *might* be faster if you send an uncompressed file.

If you’re using a V.32 (no “bis”) modem or V.42 (no “bis”) connection, or are sending a file that is already compressed, then do not use data compression.

When in doubt, experiment to see whether it is faster to send an uncompressed file with the modem’s data compression turned on, or faster to send a compressed file with the modem’s data compression turned off.

Remember that phone lines aren’t perfect. The only really clean line is a hardwired link between two computers. As soon as a phone network comes into the picture, anything can happen! Most phone connections today are clean and reliable, but every so often you’ll get a bad connection with line noise, which can cause garbage characters and file transfer errors (especially at high baud rates). When this occurs, hang up and try the number again. If the problem still occurs, read the “Check Your System Extensions” section in this manual.

File Transfer Protocols

Transferring files is accomplished by using a pre-arranged method of communicating—a file transfer “protocol.” Spectrum supports a range of common protocols. Which one you use for a particular file depends upon a variety of factors, such as:

- what protocols are supported by the host (if the host only supports Xmodem you cannot send and receive using Zmodem)
- whether you have a good phone line connection (a bad or “noisy” connection can cause errors, and some protocols handle errors better than others)

Text

If you are transferring text files, an error here or there is usually not critical (if you see “He{lo” you’d probably know the person was saying “Hello”). In cases where accuracy is not critical you can use the “Text” protocol, which has no error detection ability. *NOTE: Some services call this “no protocol.”*

Sending and receiving files via the Text protocol is essentially the same as typing information at the keyboard and capturing information as it comes in from the host.

Because it does not support error correction, the Text protocol should be used only in situations where you would normally be typing something at the keyboard. For example, you could prepare an electronic mail message offline, go online, then post the message by sending it with the Text protocol (which works like you were typing the message at the keyboard, only much faster).

Other Protocols

If you are transferring program or data files, errors must be eliminated because *every* character must match the original file *exactly*, or the file won’t be useable. In cases where accuracy is required, you must use a protocol that supports error detection (any protocol except Text).

To transfer a file, all non-text protocols work in a similar way. For example, assume you are receiving a file from GENie. After initiating a transfer, GENie sends a “packet” of characters to your computer. As it sends the data, GENie calculates a “checksum” based on the characters being sent. As Spectrum receives the data it also calculates a checksum (based on the characters it receives).

After a certain number of characters has been sent, GENie sends the checksum information and Spectrum compares its checksum with GENie’s. If they match then that packet of data is considered valid and the process continues until the entire file is transferred.

If the checksums do not match then the protocol determines what happens. Most protocols will tell GENie to send the packet again; some “turbo” protocols simply abort the transfer.

Knowing which protocol to use can be difficult. Assuming you have a good phone line connection, this table lists the protocols in order of speed and desirability (Zmodem being the best):

<i>Protocol</i>	<i>Transfer Batch of Files</i>	<i>Maximum Bytes in Packet</i>	<i>Continuous Transfer Possible</i>	<i>Bad Packets Re-sent</i>	<i>Resumes Aborted Transfers</i>
Xmodem	No	128	No	Yes	No
1K Xmodem	No	1,024 ¹	No	Yes	No
4K Xmodem	No	4,096 ¹	No	Yes	No
Ymodem	Yes	4,096 ¹	No	Yes	No
Ymodem-g	Yes	4,096 ¹	Yes	No	No
CIS B+	No ³	1,024 ¹	Yes ²	Yes	Yes ⁴
Zmodem	Yes	1,024 ¹	Yes ²	Yes	Yes ⁴
¹ Starts with small packets and increases/decreases the packet size depending upon how successfully the transfer is progressing. ² Only if the "Packet Send Ahead" option is checked (in the File Transfer Settings dialog box). ³ Theoretically possible, but in practice CompuServe never does batch file transfers. ⁴ Only if the "Resume Transfers" option is checked and the "Binary II Down" option is not checked (in the File Transfer Settings dialog box).					

More information about each protocol is below. In short, use Zmodem or CIS B+ if the host supports it; otherwise try Xmodem first, then try the remaining protocols.

Standard Xmodem, 1K Xmodem, 4K Xmodem

(when the "ProDOS Xmodem" checkbox is OFF in the File Transfer Settings dialog box)

Xmodem is the simplest protocol. Basic Xmodem uses packets of 128-bytes; the 1K and 4K variations use 1,024-byte and 4,096-byte packets, respectively.

Spectrum's 1K Xmodem and 4K Xmodem options use a technique to vary the packet sizes; too many bad packets will decrease the packet size until good packets are received, at which point they will increase.

When a packet is sent, the receiving end responds with an "ACK" (good packet) or a "NAK" (bad packet). If the sender gets an "ACK" it sends the next packet, otherwise it retransmits the packet.

Pros: The most universal protocol—virtually all telecom programs and hosts support Xmodem.

Cons: Slow transfers. There is much wasted time while waiting for ACKs/NAKs between packets, especially on long distance networks. If line noise happens to cause a spurious "good packet" acknowledgement, there is no recovery.

The packet checksum isn't foolproof. The checksum is only a simple 8 bit calculation, and it is possible for a corrupt packet to produce a valid checksum, thus leaving a corrupt file.

Doesn't transfer the file's name or type (must use a Binary II header).

ProDOS Xmodem, 1K Xmodem, 4K Xmodem

(when the "ProDOS Xmodem" checkbox is ON in the File Transfer Settings dialog box)

ProDOS Xmodem was created to resolve Standard Xmodem's file name and type limitation. ProDOS Xmodem is the same as Standard Xmodem above, except a trailing packet is sent that includes the file's name and ProDOS file type.

Pros: Based on Standard Xmodem (it doesn't hurt to always use ProDOS Xmodem; systems that don't support it will ignore the extra information).

Cons: Only Apple II bulletin boards support it.

Slow transfers.

The packet checksum isn't foolproof.

Ymodem Batch

Ymodem is similar to Xmodem, except it transfers the file's name before sending a file (no file type though). Ymodem also supports sending a "batch" of files (files are sent one after another, and an empty file name indicates the end of the transfer).

Spectrum's Ymodem options use a technique to vary the packet sizes; too many bad packets will decrease the packet size until good packets are received, at which point they will increase. Ymodem Batch and Ymodem-g can handle packet sizes up to 4,096-bytes if the receiver responds to an initial interrogation.

There is also an optional (though most hosts support it) 16-bit CRC packet checksum. The CRC (Cyclic Redundancy Check) provides very good packet integrity.

Pros: Supports batch file transfers.

Very good packet checksum (16-bit CRC).

Supported by most telecom programs and hosts.

Cons: Slow transfers (works the same as Xmodem).

Doesn't transfer the file's type (must use a Binary II header; there is no "ProDOS Ymodem").

Ymodem-g

Ymodem-g works like Ymodem except that the sender does not wait for an "ACK" acknowledgment before sending the next packet.

Pros: If you have a good connection and a very fast disk device (e.g. RAM Disk), it is faster than Zmodem (less packet overhead).

Cons: One bad packet aborts the transfer (because the sender isn't waiting for ACKs). This can happen through line noise, an interrupt while writing to disk, and so on.

CIS B+

CIS B+ (CompuServe B+) uses packets between 512-bytes and 1,024-bytes in size; at the start of a transfer there is an exchange of parameters to initiate the transfer.

If the "Packet Send Ahead" option is on in the File Transfer Settings dialog box, CIS B+ will send *two* packets when it begins sending a file. When the receiver ACKs the first packet, the sender transmits the third packet, and so on (no more than two packets are ever sent ahead). With a maximum network delay of around 1.5 seconds to most parts of the world, this gives an almost continuous transfer (which reduces the transfer time).

It supports the "Resume Transfers" option, which allows interrupted transfers to resume where they left off.

It supports the "Auto Receive" option, which allows files to be received automatically (you don't have to manually choose CIS B+ from the Receive File sub-menu).

Pros: Improved transfer speeds when the "Packet Send Ahead" option is on in the File Transfer dialog box.

Very good packet checksum (16-bit CRC).

The file's name is transmitted.

Files can be received automatically.

Good error recovery—partial transfers can be resumed.

Cons: Only supported by CompuServe.

CompuServe directs file sending *and* receiving—you cannot use CIS B+ protocol with another Spectrum user.

No ProDOS file type information is sent (just a “text” or “binary” indicator); must use a Binary II header.

The “auto receive” character is a simple Control-E; false file receives can be triggered by spurious Control-E characters.

Zmodem

Zmodem is the “Rolls Royce” of file transfer protocols. Zmodem uses “dynamic” packet sizes that vary from 128-bytes to 1,024-bytes in size. If too many bad packets are received, the packet size decreases until good packets are transmitted. When good packets are achieved the packet size increases.

There is an optional (though most hosts support it) 32-bit CRC checksum which provides nearly bulletproof protection against bad packets.

If the “Packet Send Ahead” option is on in the File Transfer Settings dialog box, Zmodem won’t wait for a “good packet” acknowledgment. Instead, it sends a continuous stream of packets until the receiver reports “bad packet.” If that occurs, the sender restarts with that packet and resumes sending a continuous stream of packets.

It supports the “resume transfers” option, which allows interrupted transfers to resume where they left off.

It supports the “Auto Receive” option, which allows files to be received automatically (you don’t have to manually choose Zmodem from the Receive File sub-menu).

Pros: Uses 16-bit or 32-bit CRC packet checksum, which provides “very good” to “near bulletproof” packet verification.

Good error recovery—partial transfers can be resumed.

Supports batch file transfers.

The file’s name is transmitted.

Files can be received automatically.

Cons: Not many hosts support it for sending *and* receiving files.

No ProDOS file type information is sent; must use a Binary II header.

Binary II Headers

When sending a file from one Apple II to another, the ProDOS Xmodem format works to preserve file information such as the file’s name, type, and so on. But what if you want to use a file transfer protocol other than Xmodem? To preserve file information in these situations, a special “header” can be added which describes the file.

Some compression programs (e.g. ShrinkIt-GS) have an option to add a “Binary II” header, and Spectrum also provides this option. In general, Spectrum’s “Binary II Up” option should be turned on. If a file doesn’t already have a Binary II header, one will be added as the file is sent.

When it receives a file, Spectrum can remove a Binary II header and use the information it contains to create a file with the proper name, type, etc. However, with “Binary II Down” turned on, file transfers cannot be resumed if they are interrupted. This, coupled with the fact that ShrinkIt-GS can automatically remove Binary II headers, suggests that the Binary II Down option should normally be turned off.

Other Information

This section covers various other information that is important or interesting, but that didn't fit anywhere else.

The Startup Process

The following things occur when Spectrum is launched (not necessarily in this order):







- Spectrum verifies all its required files are available (e.g. the Hierarchic INIT, the Spectrum.Port driver, etc.). If the Hierarchic INIT is not active (for example, if you Shift-booted the computer) then Spectrum will ask if you want to load it.
- Spectrum checks the port setting to verify it is valid. If it isn't (e.g. slot 2 was specified but there is no longer a serial card in slot 2) then the Port Settings dialog box appears so a valid port can be selected. You can click Cancel to quit Spectrum.
- At the conclusion of the startup process Spectrum checks the message center to see if there is a document to process (could occur if TransProg III, CoPilot, or some other application launched Spectrum). If so, the document is run as a script.

If there is no document, Spectrum attempts to run a script named "Spectrum.Start" (in the Spectrum.Script folder in the same folder as Spectrum). If no script is found then the startup process is finished.

If you want Spectrum to do certain things every time it starts (e.g. you want it to load a particular menu file then run a particular script) you can change the supplied Spectrum.Start as necessary. *TIP: When Spectrum is updated a new Spectrum.Start script might be provided. To avoid losing your changes it is recommended that you write a separate script that contains your startup procedures, and just include a "Run Script" statement within Spectrum.Start.*

General Keys

The following special keys are available while using Spectrum:

- Shift-3 Saves the screen image to a disk file in the folder that was last accessed. If a graphic screen is displayed then a standard picture file is created. If a text screen is displayed then a text file is created.
- Shift-4 If the Caps Lock key is up, prints a screen image of the active window.
If the Caps Lock key is down, prints a screen image of the entire screen.
-  Clear Resets the serial port. If incoming data stops flowing and the host seems to "hang," first try pressing Control-Q (not Q) because the host just might be waiting for an "Xon" character. If that doesn't work, press Clear (or -Control-X) to reset the serial port.
-

Using Twilight II

NOTE: It has been reported that using Twilight II causes character loss at high speeds. If you are using high speed connections and lose data, inactivate Twilight II and try again. If the problem persists, read the "Check Your System Extensions" section in this manual for more information (especially the "Warning About Interrupts" section).

Applications stop performing tasks when Twilight II blanks normally. In Spectrum, this can be a problem if you are transferring a file or reading messages unattended. To avoid this problem, Spectrum asks Twilight II to use "background blanking" whenever you are online, and whenever a script is running. This means that normal screen blanking occurs only if *all* the following conditions are met:

- "DCD is valid" is checked in the Port Settings dialog box,

-
- you have a properly-wired modem cable (see Appendix A),
 - the modem has been instructed to make the DCD signal valid,
 - you are not online, and
 - no script is running.

If any condition isn't met, background blanking will be used. *NOTE: If you move the mouse into a "blank now" corner, Twilight II v1.1 will do a normal blank because it is not honoring the background blanking request. If you have v1.1, contact DigiSoft Innovations to see if they have an update available to fix this problem (or just keep your mouse pointer away from any "blank now" corner).*

Using High Speed Modems

When running a typical IIgs configuration with various system extensions installed and active, the system overhead can be taxing to the point where data loss occurs at 57,600 baud, so we recommend using 38,400 baud or slower.

You might think that you must set the port speed to 57,600 or you won't get the maximum benefit from your high speed modem, but in most cases that is simply not true.

When two modems connect, they first negotiate the highest rate both modems can handle. On the high end there are two possible connect speeds: 9,600 (V.32 modem) or 14,400 (V.32bis modem).

After connecting at one of those rates (and if error correction and data compression are enabled) the error correction and data compression protocol is negotiated. The best protocols are V.42 (up to 2:1 compression) and V.42bis (up to 4:1 compression).

There is only *one* case where you might need to set the Port Setting's baud rate to 57,600:

- You have a V.32bis modem (not just V.32),
- the host you are calling has a V.32bis modem (not just V.32),
- both modems connect using V.42bis (not just V.42) protocol, and
- you transmit an "ideal" file that has not been compressed already with something like ShrinkIt-GS.

For all other situations 57,600 baud is simply not beneficial. If you have a situation where you want to use 57,600 baud, keep these points in mind:

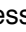
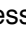
- *Sending* information from Spectrum is no problem for the IIgs (Spectrum cannot lose characters that are being sent).
- *Receiving* information might not go smoothly due to the IIgs system overhead (Spectrum's port driver might not be called often enough to see all of the incoming data, and the resulting character loss will cause errors).
- Receiving at 57,600 baud *does* work if you "Shift boot" the system (hold down the Shift key when you turn on the computer and no INITs/DAs will be loaded). Once you start adding system extensions that consume processor time—including things like AppleTalk or The Manager—incoming characters might be lost.
- The H'ware Handshake port setting must be checked, and you must have a properly-wired modem cable (see Appendix A for cabling information).
- A system accelerator (e.g. TransWarp or Zip GS) is highly recommended.
- Use a file transfer protocol that can recover from transmission errors (e.g. Zmodem).

Using The Manager

Spectrum requires The Manager version 1.1 or later.

Spectrum has already been configured to multi-task if The Manager is used (Spectrum's application setup says "Can Receive Null Events"). To let Spectrum operate in the background, you must be using an application that is set to "Can Release Null Events" *and* The Manager's preference must be set to "Allow background events."

With those settings Spectrum will be able to operate in the background. As long as you are using a "TM-compatible" online display, Spectrum can send and receive text, run scripts, and even perform file transfers in the background.

To activate another application, choose it from The Manager's menu. If you are using an online display that doesn't provide access to the menu bar, or the File Transfer dialog box is visible, hold down -Control and press Tab once or twice until the Finder or Mini Launcher appears. *NOTE: It might take a while before The Manager sees the -Control-Tab key, especially during a file transfer. If The Manager still doesn't see it after a few seconds, press the key combination again.*

When The Manager determines that you want to put Spectrum in the background, it informs Spectrum. If an online display is being used that is not compatible with The Manager, Spectrum closes the display and automatically opens the Spectrum SHR Normal display so data can continue to be processed while Spectrum is in the background. When Spectrum is reactivated, the original online display is reopened automatically.

NOTE: The Spectrum SHR Normal display is slower than the Spectrum SHR Fast display. This is partly because the display is "following the rules" for drawing to the screen, and partly caused by multi-tasking (when Spectrum is in the background it is not a priority, so it gets very little time from the system).

File Transfers

As noted above, Spectrum can perform file transfers while it is in the background. However, you must be aware that what you do in the foreground application *can* affect the file transfer.

For example, if you print something in the foreground, Spectrum is "put on hold" until printing is finished (or until spooling is finished if you are using Express). Unless you're printing an extremely small document, it is likely that the file transfer will "time out" and be aborted (especially at high baud rates).

Also, when Spectrum is in the background it will not be operating at full speed because it gets very little operating time from the system. Because of this, file transfers will take longer, and there is a much greater chance of transfer errors—especially if you have other system extensions using valuable processor time.

If you want to perform background file transfers, run the "Command.Tester" script and enter the following:

Set RelaxedXfers On

This command triples all the file transfer "timeout" values for this session (you must turn it on again the next time you start Spectrum). Note, however, that the system you are calling is not affected by this option; it might still time out if the transfer is interrupted.



Questions and Answers



Please contact spectrumdaddy@mac.com if this section doesn't answer your question!

Why is Spectrum losing characters?

Spectrum isn't *losing* characters—it is never receiving them in the first place. Spectrum's port driver is "interrupt-based" and in order to not lose characters, it relies on getting interrupts regularly.

If you are regularly missing characters, it's likely that you have one or more Control Panels (CDEVs), Desk Accessories (CDAs/NDAs), or System Setup files (INITs) that are also interrupt-based.

Because other interrupt-based extensions are also competing for interrupt time, the more of these extensions you have, the more likely it is that Spectrum will lose characters (especially at high baud rates). And if an interrupt-based extension takes too much time to do its job, even more characters will be lost.

Read the "Check Your System Extensions" section in this manual for more information (especially the "Warning About Interrupts" section).

Why do non-text file transfers have so many errors?

When an error occurs during file transfer it is an indication that the receiving end has detected an error in the information that was transmitted.

During non-text file transfers, "packets" of information are transmitted. Each packet contains 128 or more characters, and *every* character that is sent must be received *exactly* for no errors to be reported. If a single character is wrong (or missing) then an error is reported by the receiver.

If you cannot send or receive a file you probably have a bad or noisy phone connection. Log off then try placing the call again.

If you can send files with no problem but receiving files causes many errors, then it's likely that you have one or more interrupt-based Control Panels (CDEVs), Desk Accessories (CDAs/NDAs), or System Setup files (INITs). Read the "Check Your System Extensions" section in this manual for more information (especially the "Warning About Interrupts" section).

Also read the "General Tips" in the "Transferring Files" section for other file transfer tips.

Why does my modem get disconnected when I start a file transfer (and at other times it shouldn't)?

Your modem cable is not wired correctly to support hardware handshaking. Choose Port from the Settings menu, uncheck the "H'ware Handshake" option, click OK, then choose Save Settings from the Settings menu. See <<AL>>Appendix A for cabling information.

When I abort a file transfer the host keeps sending data; can I make it stop?

When Spectrum aborts a file transfer it sends appropriate codes to the host to attempt to cancel the transfer. If the transfer doesn't stop then the abort codes were either missed or not supported by the host.

To manually abort a transfer, try pressing Control-C and/or Control-X (not ⌘C or ⌘X) a few times. If the host still doesn't respond, try choosing Send Break from the Phone menu.

In the Port Settings dialog box, is there a reason to have both the “Xon/Xoff Flow” and “H’ware Handshake” options checked?

Yes. These two options control different things, and are used at different times.

“Xon/Xoff Flow” provides software flow control between Spectrum and the *host*, and normally should be checked.

“H’ware Handshake” provides hardware flow control between Spectrum and the *modem*, and should always be checked if your modem supports hardware handshaking and you have a properly-wired modem cable (see Appendix A for cabling information).

The Phone menu’s “Hangup” option is dim, but the modem is not hung up. How do I hang up?

Uncheck the “DCD Is Valid” option in the Port Settings dialog box, then try again.

Why does Spectrum say “modem not responding” when I dial a number?

The only time Spectrum checks for a modem response is just after sending the modem initialization sequence. If your modem is not responding at this point, turn the modem off, check the cables, the modem setup, and the port settings, then turn the modem back on.

If the modem still does not respond, perhaps you changed the modem initialization sequence. Choose Dial Number from the Phone menu, click the Set button, then click either the Standard or High Speed buttons to restore the correct modem initialization string.

Why is there a long pause when logging on to a system, where there was no pause with my previous telecommunications program?

Most likely the host you are connecting to has sent Spectrum a control-E “inquiry” character to try to determine what computer display is in use. Unfortunately, CompuServe B+ protocol also uses ^E to begin a file transfer. The long pause is caused because Spectrum is responding that it’s ready for a file transfer, which confuses some systems.

There are two solutions: First, some systems (e.g. CompuServe) let you turn off the initial “terminal type inquiry” option...once you set up your terminal type there is little need to change it, so changing the inquiry option is a good choice. Alternatively you can modify your logon script (assuming you’re using one) so that the “Auto Receive” file transfer option is temporarily turned off as you log in.

As soon as I type anything the screen begins filling with the letter I typed. Why?

The “Echo” option is probably checked in the Port Settings dialog box.

When you press a key, that character is sent out the port. Your modem (or the host you’re connected to) is sending that character back to Spectrum. The Echo option tells Spectrum to send every incoming character back out the port, so Spectrum does this (which starts the whole process over again).

Turn off the “Echo” option and this will stop. In general, Echo should be off unless you are running your own bulletin board or are connecting with a fellow Spectrum user (where one of you acts as the “host”). See “Echo” for more information.

Appendices

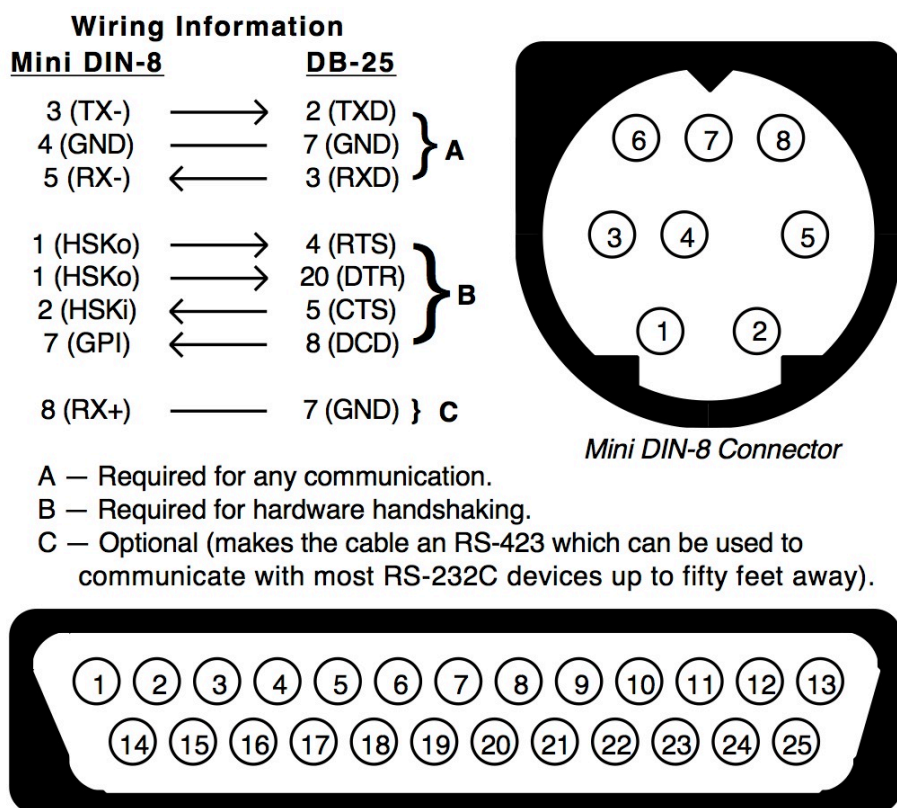
Appendix A Modem Cable Wiring

Although all “Ilgs to Modem” cables look alike (they all have a circular 8-pin connector on one end and a rectangular 25-pin connector on the other), the internal wiring can be quite different.

Spectrum can operate properly with as few as three wires connected (transmit data, receive data, and ground). Any modem cable (i.e. not a printer cable) will have these three connections, therefore any modem cable can be used with Spectrum as long as the “H’ware Handshake” option is off in the Port Settings dialog box.

However, to support “hardware handshaking” and other advanced features found in today’s high speed modems, you need a special cable that has several more wires connected. Naturally, those wires must connect the proper pins on each end of the cable or it will not function correctly.

Unfortunately there are several “standard” wiring designs for high speed cables. Spectrum supports the following cable standard for high speed telecommunications:



The high speed modem cable standard supported by Spectrum and other high-speed telecommunications programs for the Apple Ilgs

This “High-Speed Modem Cable” can be purchased from Morgan Davis Group for less than \$20. Have your credit card handy and call (619) 670-0563 or FAX (619) 670-9643.

This cable design provides data carrier detection so Spectrum can know when you are online. It also supports hardware handshaking by connecting the port’s two handshaking signals to the modem’s “clear to send” and “ready to send” signals. *NOTE: The modem must be set to ignore the DTR signal (see your modem’s manual; the typical command is &DØ).*

Another Option

There is another cable format that is similar to the cable above, except the mini DIN-8’s pins 2 and 7 are reversed. This alternate cable format is sometimes used with the GBBS software.

If you have such a cable you can try using an alternate port driver that is provided with Spectrum.

- ① Launch Finder (the program with a trash can icon).
- ② Open the Spectrum folder.
- ③ Open the Add.Ons folder.
- ④ Rename “Spectrum.Port” to be “SP.Port.Main”.
- ⑤ Rename “SP.Port.Alt” to be “Spectrum.Port”.
- ⑥ Launch Spectrum.

If you still cannot accomplish high speed transfers, read the “Check Your System Extensions” section in this manual. If the problems persist you should order the standard modem cable described in the previous section. Also, don’t forget to rename the port drivers to their original names (rename “Spectrum.Port” to be “SP.Port.Alt” then rename “SP.Port.Main” to be “Spectrum.Port”).

Appendix B

Common Hayes Commands

Spectrum works with Hayes-compatible modems, which use a common command language.

When you first turn on the modem it is in “command mode” (ready to accept commands). When you connect to another computer the modem switches to “data mode” (all characters are transferred to/from the modem without it trying to interpret the characters as commands).

To get back into “command mode” the modem must not receive data for a certain length of time, then it must receive three “modem escape codes,” then it must not receive data for a certain length of time (see Registers 2 and 12). When this occurs the modem will respond “OK” and will be ready to accept commands.

While in command mode, the modem ignores spaces (or any characters not defined as part of its command set). To be recognized as a command, the line must begin with AT. All commands must be typed in uppercase. Multiple modem commands can be included on the same line, provided the line does not exceed 40 characters. The modem does not act on the command until Return is pressed.

The following list only describes the most basic Hayes modem commands (there are many others available). Refer to your modem’s manual for more information about these and other modem commands.

Some commands require a number or some other parameter. These parameters are shown as lowercase, italic letters. For example, in the command *En*, *E* is the command, and *n* can be Ø or 1 (in actual use, *EØ* or *E1* would be used...not *En*).

Command	Parameters	Description
AT		Attention code; precedes all command lines
A		Answers call immediately (takes the modem “off hook” and attempts to connect)
Ds		Dials a telephone number. <i>s</i> can be one or more of the following characters:
	T	use touch tone dialing
	P	use pulse dialing
	,	pause for [Register 8] seconds
	;	stay in command mode after dialing
	Ø–9	numbers
	* and #	when using touch tone dialing, produces the same tones as the * and # buttons on the phone
En	<i>n</i> =Ø	do not echo characters while in command mode
	<i>n</i> =1	echo back all characters while in command mode
Fn	<i>n</i> =Ø	half duplex
	<i>n</i> =1	full duplex
Hn	<i>n</i> =Ø	on hook; hangup
	<i>n</i> =1	off hook
Mn	<i>n</i> =Ø	speaker off always
	<i>n</i> =1	speaker on until carrier detected

	$n=2$	speaker on always
O		Return to online state (data mode)
Qn	$n=\emptyset$	result codes sent
	$n=1$	result codes not sent
$Sn=x$	$n=\emptyset, 2-15$ $x=\emptyset-255$	sets Register n to value x
$Sn?$	$n=\emptyset-16$	modem sends value of Register n to Spectrum as a number from $\emptyset-255$
Vn	$n=\emptyset$	Hayes numeric result codes
	$n=1$	Hayes verbal result codes (OK, CONNECT, RING, NO CARRIER, ERROR)
Z		Causes a software reset and applies all default values (possibly as configured by switches on the modem)

The $Sn=x$ command is used to set the contents of a “Register” in the modem, and the $Sn?$ command can be used to read the current value of a particular Register. The following list describes only the most commonly-used Registers.

Register	Range Units	Default (means)	Description
\emptyset	$\emptyset-255$ rings	\emptyset or 1	number of rings to answer on (\emptyset =no automatic answer)
1	$\emptyset-255$ rings	\emptyset (\emptyset rings)	number of rings that have been detected (read only)
2	$\emptyset-127$ ASCII	43 (+)	character the modem recognizes as the escape code
3	$\emptyset-127$ ASCII	13 (return, ^M)	character the modem recognizes as carriage return
4	$\emptyset-127$ ASCII	1 \emptyset (down arrow, ^J)	character the modem recognizes as line feed
5	$\emptyset-32, 127$ ASCII	8 (left arrow, ^H)	character the modem recognizes as backspace
6	2–255 seconds	2 (2 seconds)	time to wait for a dial tone
7	1–255 seconds	3 \emptyset (3 \emptyset seconds)	after dialing or answering, time to wait for carrier detect
8	$\emptyset-255$ seconds	2 (2 seconds)	when dialing, pause this long for each comma
9	1–255 1/1 \emptyset seconds	6 (.6 seconds)	carrier detect response time
1 \emptyset	1–255 1/1 \emptyset seconds	7 (.7 seconds)	delay time between loss of carrier and hangup
11	5 $\emptyset-255$ 1/1 $\emptyset\emptyset$ seconds	7 \emptyset (.7 seconds)	duration and spacing of touch tones
12	2 $\emptyset-255$ 1/5 \emptyset seconds	5 \emptyset (1 second)	modem escape code guard time



Addendum



Spectrum Version 2.0 through 2.5.3

This document describes what's new in Spectrum versions 2.0 through 2.5.3. If you are upgrading from Spectrum v2.1 or later, refer to Spectrum's online !Help! topic "Changes in Spectrum v2.5.3" and "Changes in Scripting v2.5.3" to learn about all the bug fixes and program feature changes made in the v2.2 through v2.5.3 updates.

Significant changes to Spectrum's scripting language were made in the v1.0 to v2.0 update, and additions were made in the Spectrum v2.1, v2.2, v2 and v2.4 updates. Bug fixes were made in the 2.5.2 and 2.5.3 updates. Rather than listing those changes on disk and having three separate script references, the changes have been repeated in this addendum. This also gives us an opportunity to correct an oversight in the v2.0 addendum...this addendum includes an index!

Spectrum is no longer distributed by My eSource, formerly Seven Hills Software. All sales were handled by Syndicomm™. The references to Seven Hills in the 'Getting Started' and 'Scripting' manuals have been retained, as these reflect the status of Spectrum when those two manuals were first printed.

Spectrum is now Freeware, and can be downloaded from: <http://www.wannop.info/speccie>

Credits

Spectrum version 2 was a team effort that would not have been possible without all of *our* beta testers, so we thank all of them for their efforts to make Spectrum as bug free as possible.

We'd especially like to thank Ken Lucke for alpha testing Spectrum many months before it went into beta (his diligence in testing and retesting each incremental update resulted in a very smooth beta testing period). Thanks also for writing and maintaining Help files, for all the scripting suggestions, and for writing scripts that actually *used* those new commands! Finally, thanks for the general support and encouragement, it has been appreciated.

And the greatest appreciation must go to Ewen Wannop who spent too many evenings and weekends writing version 2 instead of gardening! If it wasn't for his incredible patience in adding new scripting features at every turn, Spectrum wouldn't be what it is today.

Notes

To learn about most of Spectrum, read the Getting Started and Reference manual. Once you are familiar with the original Spectrum features you can then read the "New or Changed Program Features" section below to find out what's new in version 2.0 or later. Likewise, when you begin writing scripts you should read the Scripting manual to learn about the original Spectrum features, then read the "Script Language Changes" section below to learn what's new in version 2.0 onwards.

Installation Instructions

If you are a new owner of Spectrum: Follow all the installation instructions in the Getting Started and Reference manual. If you install Spectrum sounds you should also run the “SoundPatch” utility to add some new sound events into the Sound CDEV.

If you purchased the floppy disk version of Spectrum v2.2, you will need to download the Spectrum v2.5.3 Updater:

[<http://www.wannop.info/speccie>](http://www.wannop.info/speccie)

If you purchased Spectrum version 2.2 on floppy disk:

- ✱ Insert the original Spectrum Install disk.
- ① Run the Installer, and when you are asked to do so, type your full name then click the OK button.
When personalization is complete, Apple’s Installer is launched automatically.
- ② After installation, locate the Spectrum 2.5.3 updater archive, and run the Install script to update from Spectrum v2.2 to Spectrum v2.5.3.

If you purchased Spectrum version 2.5.3 on floppy disk:

- ✱ Insert the original Spectrum Install disk.
- ① Run the Installer, and when you are asked to do so, type your full name then click the OK button.
When personalization is complete, Apple’s Installer is launched automatically.

If you purchased the CD version of Spectrum version 2.5.3:

- ✱ Drag the Spectrum folder to your hard drive to make the ‘Spectrum.2.5.3’ folder.
- ① Run the Installer, and when you are asked to do so, type your full name then click the OK button.
When personalization is complete, Apple’s Installer is launched automatically.

If you will use Spectrum on a hard disk drive:

Skip to the next page if you use Spectrum with 3.5" disks.

- ③ Select the “Spectrum 2.5.3” script and click the Install button. Outdated files will be removed, and Spectrum v2.5.3 will be copied to the disk that was used to start up the computer. NOTE: If you want to install Spectrum to some other disk, click the Disk button until the disk is displayed.
- ④ After the update is installed, click the Quit button.
- ⑤ Launch the “SoundPatch” application and follow the on-screen prompts to update your Sound Control Panel (CDEV) so it lists all the currently defined “sound events.”
- ⑥ Choose Control Panels from the ⌘ (Apple) menu, then open the “Sound” CDEV.
- ⑦ Assign the sounds you want by selecting an event from the Event popup menu, then choosing the sound to be associated with that event from the Sound popup menu. For example:

Event	Suggested Sound
File Transfer Complete	Send/Receive-Good or Ahh or Trumpets
File Transfer Failed/Abort	Send/Receive-Bad
Grabbing Screen	Saving Screen
Key Click	Key-Any
Modem Connected	Phone-Connected
Modem Hanging Up	Phone-Hangup
Modem No Carrier	Phone-No Connection
RealTime Message	Phone-Connected or Trumpets
Return Key	Key-Return
Space Key	Key-Spacebar
You Have Mail	You Have Mail or You Have Mail (HAL)

-
- ⑧ If you experimented in step ⑦ by choosing several sounds to hear what they sound like, choose Shut Down from the Special menu, then select the Restart option and click OK to restart the computer. The reason for restarting is that the Sound CDEV is now probably using a lot more memory than it needs to be, and restarting will fix that.
 - ⑨ Now launch Spectrum version 2.5.3!

To install the !Help! NDA System and documentation for Spectrum:

- ① Select the 'Spectrum Help System' script and click the Install button. The !Help! NDA and related documentation will be copied to the 'System:Desk.Accs' folder on your boot drive.
- ② Reboot your hard drive to install the !Help! NDA into the Apple Menu.

If you use Spectrum with 3.5" disks:

See the previous section if you will use Spectrum with a hard disk drive.

- ③ Choose Quit from the File menu and the Finder reappears.
- ④ Make a backup copy of the Spectrum update disk.
- ⑤ Drag the original Spectrum update disk icon into the Trash to eject the disk and remove its icon from the desktop.
- ⑥ Insert the backup copy of the Spectrum update disk.
- ⑦ Rename the backup disk to be "Spectrum".
- ⑧ Drag the following items into the Trash:
 - ☐ Prefs.Convert
 - ☐ Install
 - ☐ Misc.
- ⑨ Choose Shut Down from the Special menu then click OK to shut down (turn off system power). You can now start using Spectrum v2.5.3 just as you have been using Spectrum v1.0 or later.



Feature Changes



This section describes the program feature changes made in all versions of Spectrum from Spectrum v2.0 through v2.5.3. Refer to Spectrum's online !Help! topic "Changes in Spectrum 2.5.3" to learn about the recent bug fixes and program feature changes made in the v2.2, v2.3, v2.4, v2.5.2 and 2.5.3 updates.

You will immediately see some changes with the Spectrum™ v2.5.3 menus. These are mainly to include the integrated support of Marinetti™ 2.0 and its TCP/IP environment.. This has led to a number of additional script commands to support TCP/IP through scripting. There are also a few other new menu items that have been added since Spectrum™ 2.1.

Underneath the surface there have been many changes, bug fixes, and new script commands added. Most of the additional script commands have been designed to enhance and improve script functionality, and many are a result of limitations found while developing both "Spectrum Internet Suite™" and other script sets. Some of the XCMDs have been expanded since the release of Spectrum v2.1. Some of these XCMD updates have already been issued with the various script sets, but the latest versions of all the current XCMDs are included with this release of Spectrum, and should be used in place of existing versions. Some existing XCMDs that are no longer required will be removed by the Installer.

The Spectrum™ 2.5.3 update did not introduce any major feature changes from Spectrum™ 2.2. A small number of script commands have been added however, and a number of minor bugs have been fixed.

General Changes & Bug Fixes

NOTE: The version 2.2 to 2.5.3 Preference file format has been extended to support new features. Version 2.x preference files are converted automatically to the new format. The new format cannot be used with older Spectrum Pref files.

- In v2.2, the code was significantly reorganized to make room for more features. The protocol transfer code and some of the dialog code have been put into two dynamic segments to be more memory friendly.
- The Spectrum Port driver wasn't forcing unused high-bits off (i.e., when a 7-bit data format was selected it was possible for the 8th bit to be set). Fixed.
- The Spectrum Port driver stopped liking DataLink modems, especially on ROM01 machines. Fixed.
- Made more refinements to try to reduce data loss:

Removed a _TickCount call from the timer routine.

Now waits for VBL to cycle when changing hardware handshake status.

Added support for "Il Not Disturb" to automatically turn "Master Time Keeping" on and off whenever Spectrum is started and quit.

- ^G (SysBeep) has been reworked so the correct Sound CDev sound should be played. Now the interrupt-friendly (raspy) beep will play only if Hardware Handshake is not checked and a carrier is detected.
- If an XCMD or Online Display is not loaded successfully, now a beep is sounded and the item's name is displayed for one second in the "Loading" status area.
- We added the capability for XCMDs to add custom menu items into Spectrum's menus. Several supplied XCMDs take advantage of this feature, including HodgePodge and Kermit.
- A new "🍏" (solid black apple) menu has been added to the right of the Settings menu. The new menu is shown only when an XCMD has added an item to it.

-
- Fixed a problem where the menu bar clock would not change to “am” at midnight or “pm” at midday unless the clock was fully updated (e.g., by a window closing or other similar event).
 - Alerts now use “the latest cool button layout.”
 - From Spectrum™ v2.2 onwards:
 - Spectrum™ now requires System 6.0.1. A hard disk is recommended.
 - Improved script execution speed through a reorganization of the matching algorithm.
 - Scripts can be compiled to optimise their execution speed.
 - Spectrum™ and the XCMDs are now Y2K compliant, where appropriate, additional script commands have been added..
 - Spectrum™ now features integrated support for Marinetti™ 2.0 TCP/IP.
 - HTML files can be viewed directly from within Spectrum™.
 - Internal support for the Babelfish™ Import and Export. Engine.
 - New internal “Preferences” folder.
 - Spectrum™ now looks first for the “Spectrum2.Prefs” file in the internal Preferences folder, before it looks in the System folder. This allows multiple copies of Spectrum to run smoothly.
 - Conversion of old preference files no longer causes problems.
 - Spectrum™ now supports the Control Panel version of Hierarchic. If not already active, Hierarchic will auto-load if the CDev is present in the CDevs folder.
 - The Spectrum™ Port driver has been updated.
 - Support for ‘finderSaysBeforeOpen’ calls to open Text files automatically.
 - From Spectrum™ v2.3 onwards:
 - An X/Y/Zmodem bug that slowed transfers and caused increased checksum errors has been fixed.
 - A workaround has been made for a bug in the Marinetti 2.0 TCP/IP stack. This could cause Spectrum to crash if a socket closed when more than 4K of data was returned.
 - The RESUMENEXT script command now works correctly.
 - Fixed a problem in the “Search File” script command that caused an endless loop under certain circumstances.
 - Fixed a problem with sending Text files showing the wrong size in the Status dialog.
 - Fixed some interaction problems with Hierarchic and custom menus.
 - Fixed a Hangup problem when DCD and Hardware Handshake were not checked.
 - Fixed the reversed paths for “Set SendPath” and “Set ReceivePath”.
 - Improved the renaming algorithm when receiving duplicate files.
 - Fixed a problem that would cause endless looping if the receive filepath was not found.
 - Fixed a problem that could cause hanging if the Capture Buffer filled during batch downloading.
 - Fixed a problem that could cause overwriting on the Text screen during downloads.
 - Improved the handling of the WindowMgr Menubar switching.
 - Fixed a bug in Evaluate where a number to the power of ‘0’ was returning an incorrect value.
 - OA-G no longer clears the Text or VT100 screen display if they are already open.
 - Improved recovery from cancelled X/Ymodem transfers.
 - Fixed an intermittent lock up on printing.
 - AppleWorks 5.0 documents include Inverse and MouseText characters. These will now display correctly within the Editor, though the Inverse attributes will be stripped. These characters will also be sent correctly if you send an AppleWorks file as text.
 - There is a bug in the original GSPlus™ XCMD that can cause it to interfere with the messages being sent to other XCMDs. If you have been using this XCMD, you will find a new version supplied with Spectrum™ 2.5.3 that cures these problems.
 - Version 2.5.3 fixed some problems with the TCP/IP data interface.

🍏 (Apple) Menu

- Removed Spectrum's built-in help in favor of the !Help! NDA (which is included with Spectrum). If you don't want any help you can inactivate the Help.NDA desk accessory (located in the System:Desk.Accs: folder).

If you want help only while Spectrum is being used (even if you have Shift-booted the computer) you can move the Help.NDA into the same folder as the Spectrum application. If Spectrum loads the NDA, it is unloaded when Spectrum quits.

Regardless of where the Help.NDA is located, the NDA always looks for its files in the Desk.Accs:Help.Files: folder.

- Added "Menu Item Help" that dims every menu item except those owned by Spectrum, and changes the mouse pointer to a "menu item help" pointer. When a menu item is selected, Spectrum asks the !Help! NDA to display the appropriate help information.

NOTE: Spectrum cannot dim the TransProg III menu (if present). If you select an item from the TPIII menu, the help request is transmitted to !Help! but then TPIII will attempt to launch the item you selected.

File Menu

Open

- Option-opening a file of type \$50 could cause a crash because Spectrum was interpreting all filetype \$50 files as Teach files. Fixed.
- Loading an empty file into the Editor changed the name of the Editor window to the empty file's name, even though the Editor contents were untouched after an error message was shown. Fixed.
- Holding the Option key down now allows the data or the resource fork (if present) of a file to be opened.
- If a file with the suffix '.HTM' or '.HTML' is opened, and the optional 'HTML.Engine' is present in the 'Add.Ons:Drivers' folder, you will be asked if you want to view the file as HTML. You will still see the file in its raw text form in the Editor after you have finished viewing the HTML display.

Save

- The correct filetype is now set on "saved as" files.
- With an autosave file set up, Save As will allow saving of the current buffer independently from the Save command.
- Added a clarification message when autosaving a buffer to a full disk.
- If you opened an AppleWorks file into the Editor, then File/Saved it, the file is saved as Text instead of AppleWorks. Fixed. (Use Save As to save as a different file type.)

Babelfish™

- Babelfish™ Import and Export is now supported. This requires Babelfish™ to be installed, and Text filters to be available. See the Babelfish™ documentation for further details.

Send/Receive

- Added the ability to transfer files that have a resource fork, by using a MacBinary header. Because the receiver must be capable of receiving and processing a MacBinary file, the default file transfer preferences are set so files with a resource fork cannot be transmitted. If you decide to change this preference, be sure the recipient is able to handle the file.
- If you received a file via Zmodem to a P8 volume, and the file had a period as the first character, Spectrum was doing strange things and reporting non-existent errors. This was caused by a bad JudgeName call. We also found that if you received a file by Zmodem that required JudgeName, the transfer did not complete properly. Both items have been fixed.

-
- A “Make this folder default” checkbox has been added to the file selection dialog boxes for all built-in file transfer protocols. When checked (and you accept a file to transfer) the folder that contains the file is stored as the default send or receive file transfer path. The choice is not written to the preferences file unless the settings are saved.
 - When sending a text file, Macintosh text files would not be selectable. Fixed.
 - When sending Xmodem ProDOS, the received file would be truncated. Fixed.
 - Fixed a Zmodem escape character problem that showed on some host systems.
 - The Freezer XCMD is no longer necessary, as its functionality has been incorporated directly into Spectrum.
 - Spectrum was forcing filenames to lowercase for Zmodem and Ymodem receives. Fixed.
 - If an incoming Zmodem file happened to have a colon or slash in its embedded filename, a “file not found” error would occur and the transfer would abort. Most Zmodem implementations do not pass these characters, but some do, so Spectrum now replaces those path separators with periods.
 - Spectrum does not attempt to extract files from a Binary II wrapper if there are multiple files enclosed because it would be nearly impossible to resume a transfer. To help alert the user that he needs to use some other program (like ShrinkIt) to extract the multiple files, a message is now added to the capture buffer that says “WARNING: A Binary II header holding multiple files was not unpacked.”
 - Removed the code to resume CIS B+ uploads because CompuServe has never implemented that capability.
 - The file transfer status dialog box now shows whether a Binary II or MacBinary header is present on the incoming/outgoing file.
 - When using CIS B+, if you typed only a filename to send or receive, the correct file transfer folder was not always set properly. Fixed.

Launch

- Fixed a problem that would not let the Hangup checkbox be unchecked.

Quit

- If you opened the SHR screen, then the Editor, then opened the VT100 display, then go back to the Editor and File/Quit, lots of windows would appear, disappear, reappear, etc. as the windows were closed in a fixed order. The windows are now closed in the order in which they are layered.

Edit Menu

Paste

- If text had been copied into the Clipboard, Paste was not highlighted when the Editor was first opened. Fixed.
- ⌘V did not work in VT100 if the chat line had been open in the Spectrum Text screen. Fixed.

Paste As Reply

- This feature didn’t work right if the selected text was greater than 76 characters. Fixed.

Find/Replace

- Pasting into the Find box now activates the Find button.
- The “apply/replace” script command was changing some choices in the dialog box. Fixed.

Signature

- If a Signature has been defined by the ‘Set Signature’ script command, this will insert that Signature into any open TextEdit window.

Show Menu

Online Display

- ⌘J did not work from some online displays; you had to press ⌘-Shift-J. Fixed so it is no longer case sensitive.
- When displaying echoed information, characters were routed to the script screen vector instead of the normal screen vector, which caused some information to be lost. Fixed.

Editor

- Added more support for extended keyboards (the small “forward delete” key, Home, End, Page Up, Page Down).
- If an NDA or other concurrent application sends a ‘finderSaysBeforeOpen’ call, and Spectrum™ gets the call first, the filetype will be checked to see if it is a Text, Teach or classic AppleWorks file. If so, it will be opened into the Editor. An example is double-clicking a Text file displayed in a Disk Access II™ catalog, when Spectrum will open the file before Disk Access II™ opens its default window.

Clipboard

- The clipboard window can now be printed. The window is also now “editable” in that you can highlight some text in the Clipboard window and Edit/Copy it...which deletes all of the clipboard contents and replaces it with the text you had highlighted.

Chatline

- If you press the down arrow in the first or second line when the cursor is to the right of the end of the next line, the cursor jumps to the end of the next line instead of sticking, and not moving as expected.
- If the chatline was full, pressing the Arrow keys would cause a beep. Now it beeps only when attempting to add a character.
- If you are using the SHR display, you can now move around the Chat Line by clicking with the mouse.

Phone Menu – TCP/IP Menu

Please refer to the documentation that comes with Marinetti™ for full details on how to setup and activate TCP/IP through the TCP/IP Control Panel.

Dial Number - Services

- Spectrum no longer auto-dials the next phone number if the current phone number fails to connect.
- Linking a script to a dialing entry no longer corrupts the first character of the filename.
- From Spectrum™ v2.3, Dial Number still operates as before, but if the optional TCP/IP Menu is selected instead, this item will be renamed to Services.
- The Modem Init dialog has been changed to show a “popup” menu of modem types instead of the original “Normal” and “High Speed” strings. The file that is used to build this menu is held in the new “Preferences” folder and so can be edited if you wish.
- “Services” leads to a similar dialog to the “Dial Number” dialog. You can create and edit a service list of your most used services. You can also connect directly to a system by entering an “IP name” or “dotted address” into the Connect box.
- “Telnet” mode can be optionally selected. In Telnet mode, the setting of the Half Duplex flag is ignored, and echoing to screen will be controlled by the host you are currently connected to.

Hangup - Connect - Disconnect

- In Serial mode, the 'Hangup' menu item is dimmed if offline.
- In TCP/IP mode, the 'Hangup' menu item is renamed to either 'Connect' or 'Disconnect'. 'Connect' will make a connection to your ISP. 'Disconnect' will warn if you have any active connections, and then Disconnect you from your ISP.

Switch to TCP/IP - Switch to Serial

- Controls the switching between the two operating environments. When in Serial mode, the menu items are named as before, but when in TCP/IP mode, some menu items now have new names and functions:

Answer Back - Logout

- Answer Back operates as before.
- Logout logs you out from the currently active connection.

Service Items

- When you have logged in to a service, the connection or socket names will be entered at the foot of the TCP/IP menu. Each menu item is numbered, and you can then switch between active connections by selecting from this menu. You can also link these items to FKeys, by running the 'TCPIP.FKeys' script.

Script Menu

See the "Script Language Changes" section for the list of changes that affect scripts.

Learn a Script

- This will now record any pause from the last character being received, and a string being transmitted. This should help produce improved scripts where time sensitive actions are important. You should always subsequently edit generated scripts so they are optimised for best results.

Menu Files

- These files can now have optional pathnames that will be used instead of a linked "Letter" key. A space can also now be used instead of a "Letter" key. To build the file, 'tabs' are used to space any pathname that is given from the menu name. This now means that a Menu file might look like this:

A	First Script
B	Second Script with path<tab>:hard.disk:folder:filename
	Third Script with path<tab>:hard2.disk:folder:filename

Settings Menu

Online Display

- The "Spectrum SHR Fast" and "Spectrum SHR Normal" displays have been combined into a single "Spectrum SHR" display that automatically switches between the fast and normal display modes as necessary.
- If Delete=Backspace is checked, character \$08 is sent out the port when the Delete key is pressed, rather than whatever key sequence is associated with the left arrow key.

ANSI

- There was a slight possibility that commands with multiple parameters (e.g., ESC[31;47m) could be trashed. This has been fixed.
- The underline character attribute is now supported.
- Supports the direct actions **Debug On** and **Debug Off** to control whether unknown/unsupported Escape codes are displayed in the Status Line. For example:

DirectAction "Debug ON" 0

DirectDisplay "^[[8a"

- Escape sequences which do not have commands are ignored (or reported as invalid if display debugging is on).
- Invalid SM and RM commands are tolerated better.
- Supports Insert and Replace Mode (IRM) using the SM and RM commands with a parameter of 4 (e.g. ESC[4h) sets the mode so characters are inserted instead of replaced.
- Supports Horizontal Editing Mode (HEM) using the SM and RM commands with a parameter of 10 (e.g. ESC[10h) sets the mode so editing commands (insert/delete) go left instead of right.
- Supports the Insert CHaracter (ICH) command to insert a specified number of blank characters at the current location (respecting the HEM mode). For example, ESC[3@ inserts 3 blank spaces.
- Includes custom support for Genie's Internet services.

Options

- The old "File Transfer Settings" submenu has been renamed. This better reflects its use by many of the XCMDs. For details of any additional Menu items, refer to the 'Spectrum Extras' subject, and the relevant sub-topic of the !Help! NDA.

The Options menu item now presents a sub-menu with Receiving Options and Sending Options and other Options items inserted by XCMDs. Most of the options existed in Spectrum v2.0; the new or changed items are as follows:

- SendAhead is relevant for both sending and receiving, but different protocols handle SendAhead differently. Because there is really only a single SendAhead option, if you change the setting in the Sending Options dialog box, it will also change in the Receiving Options dialog box (and vice-versa).
- The Sending Options dialog lets you specify the location of the files to be sent. The Receiving Options dialog lets you specify the default location for storing received files. In each case you can choose no default location, and files will be sent from/received into the most-recently used folder.
- The Receive Options dialog lets you specify the filetype and auxtype to be assigned when the received filetype/auxtype is unknown.
- MacBinary is now supported so files with a resource fork can be transmitted to other Spectrum v2.4 owners, to Macintosh computers, or to others who can process a MacBinary header.

External Commands (XCMDs)

The "Spectrum Extras" subject and sub-topics in the !Help! NDA contain complete documentation on the new and updated XCMDs provided with Spectrum v2.4.

NOTE: The Freezer XCMD is no longer necessary because its automatic features are included directly in Spectrum v2.1. It can still be used if your scripts want to freeze the mouse manually.

The following XCMD-related changes were made to Spectrum itself:

- Unclaimed control hits might not have been seen by XCMDs correctly. Fixed.
- The version number in Spectrum's _AcceptMessage call has been changed to 2.1.
- The BinHQX XCMD has been expanded since Spectrum™ 2.1, to include Base 64 and UUencode functions.

-
- NOTE: The TopCat, BatchXfer and Freezer XCMDs are no longer necessary because their features have been incorporated directly into Spectrum™ v2.4.
 - The ResEdit XCMD has been replaced by the WorkBench XCMD .
-

TCP/IP

Spectrum now has two modes of working. The original Serial connection mode and a new TCP/IP mode. You must have the Marinetti™ TCP/IP Cdev installed and configured to use the TCP/IP mode.

If you regularly use any other communications programs, you may wish to use Serial mode as your default setting when Spectrum first starts up. If TCP/IP has made an active connection by another application before Spectrum is started, TCP/IP mode will be forced, regardless of your default settings. If you wish to continue with a serial connection, you must first Disconnect TCP/IP by either selecting Switch to Serial on the TCP/IP menu, or by calling the Set Serial script command.

If the TCP/IP CDev or another application makes the connection, Spectrum will be forced into TCP/IP mode when it starts. You will see an Alert box warning you of this.

When you Quit Spectrum, if TCP/IP is still Connected, any open sockets will be closed automatically whether TCP/IP is disconnected or not.

TCP/IP Menu

Services

Choose *Services* to *Connect* to a host or to create Service entries for the systems you call.

Services Entries

Click *New* to create a new Service entry; to edit an existing entry highlight it and click *Edit*.

Up to 32 Service entries can be created within the list. Each Service entry remembers the dotted address or system name that you enter, an optional linked script, and the required display. If you choose '*Default Display*', then the current display will be used. Unlike the phonebook entries, a Service entry does not remember other settings, as these are not directly relevant to a TCP/IP connection. The Service list is stored as a text file in the '@:Spectrum:Add.Ons:Preferences:' folder. This file can be manually edited if you wish. The 'Tab' separated fields for each line are: *Entry Name, Address, Script and Online Display*.

Login

Double click an entry from the list, or enter the dotted address or host name into the Connect box. If you are not already online you will automatically be connected.

Telnet

The Telnet mode is the default mode used for most services. It will be automatically set whenever you open the Services dialog. If you do not wish to connect in Telnet mode, then uncheck the 'Telnet' box before logging in. Note that the setting of *TCPEOLTranslation*, *TCPFlushChar* and *TCPFlushFrequency* will all affect the keyboard responses if Telnet mode is turned off.

TIP: If the connection fails, and you cannot Disconnect normally, you may find that the modem is still online. Quickly switch to Serial mode, select the same baud rate that TCP/IP was using, and select Hangup to drop the line.

TIP: If you do not want to see messages while you connect, or do not want the Capture buffer and screen to record a switch of services. uncheck the respective checkboxes.

Connect - Disconnect

If you are not yet connected to your ISP, the menu will show Connect, and will connect you to your ISP. Choose Disconnect to logout ALL active Connections and Disconnect from the host. If there are Connections active, you will be warned and have the option to Cancel.

Once connected, you will still need to login in to a service from the Services dialog.

Send Break

This menu item will be dimmed while TCP/IP is active.

Switch to Serial

This menu item will switch to the Serial mode from TCP/IP mode.

Close Connection

Choose *Logout* to logout from the currently selected *Connection* shown by the ✓ marker. If there are other active Connections, then the first of these will then be selected as the new active Connection.

Connections:

Each connection you open will add an entry to the end of the TCP/IP menu. If the chosen Connection was opened from an item in the Service List, or the optional MenuName was used in the *Open TCPSocket* script command, then that name will be used for the Menu item. Otherwise the domain name or dotted address will be used. Each entry is numbered to show the logical Connection.

You can change active connection by selecting a new one from those shown. A ✓ will show against the current active *Connection*.

When you switch *Connections*, the current display type, screen contents, and up to 32K of the *Scrollbar* Buffer will be preserved. If you then switch back to this *Connection* later, the display will be restored as it was when you last viewed it. If a script has set the 'Set Screenbypass ON' flag, then the displays will not be reopened automatically. Note that with a large number of sockets open, you could eventually run out of memory if all the *Scrollbar* Buffers were full. It is advised to size the *Scrollbar* Buffer to suit the number of Connections you might expect to use.

When you switch *Connections*, a marker line will be added to the *Capture* buffer, to show a new *Connection* has been selected.

Tip: Define your FKey Menu items for the first ten connections. You then be able to quickly switch these by using the OA-# equivalent.

Index

This index attempts to reference all the topics you might look up.

1K Xmodem	22, 24	Check Startup Device	11, 16
4K Xmodem	22, 24	Check Your System Extensions	17
A			
About Spectrum	4	Choose Font	28
Add Line Feeds	30	Choose Printer	25
AE DataLink Modem	42	CIS B+	22, 24, 51
All Lower Case (Text Format)	30	Classic Desk Accessories	20, 21
All Proper Names (Text Format)	30	Clear	27
All Upper Case (Text Format)	30	Clear Capture Buffer	25
Answer Back	36	Clear Menu File	39
Answers to Common Questions	56	Clear Timer	60
Append Selection To Editor	28	Click (mouse)	11
Apple (🍏) Menu		Clicks	43
Desk Accessories	67	Clipboard	32
Help	21	Clock	43, <i>See also</i> Timer
Apple Menu		Close	22
About Spectrum	21	Command Keys	19
Auto Buffer Control	43	⌘ (Paste as Reply)	27
Auto Receive	45	⌘*(Rerun Script In Memory)	38
B			
Babelfish™	67	⌘, (Start Timer)	36
Baud Rate	40	⌘, (Stop Timer)	36
Binary II Down	46	⌘-Control-Esc	30
Binary II Up	46	⌘, (Append Selection To Editor)	28
Buffer Size		⌘= (Capture Off)	24
Capture Buffer	31	⌘= (Capture On)	24
Port Buffer	40	⌘\ (Show Scrollback)	32
Scrollback Buffer	42	⌘` (Show Chat Line)	32
C			
Capitalize Sentences (Text Format)	30	⌘- (Run Editor As Script)	38
Capture	24	⌘A (Select All)	27
Capture Buffer	31, 42	⌘B (Send Break)	35
Capture To File	25	⌘C (Copy)	27
CDAs	17, 21	⌘D (Dial Number)	33
CDEVs	17	⌘E (Show Editor)	31
Change LFs Into CRs	30	⌘F (Find/Replace)	30
Character Delay	41	⌘G (Online Display)	31
Character Filter Settings	44	⌘H (Hangup)	35
Chat Line	32	⌘I (Send Text File)	23
		⌘J (Send Editor Text)	23
		⌘K (Format Text)	29
		⌘L (Learn A Script)	37
		⌘M (Send Clipboard To Modem)	28

⌘M (Send Selection To Modem)	28	Editor	31
⌘N (New)	22	Editor Text	23
⌘O (Open)	22	External Commands (XCMDs) (v2.5.3)	71
⌘P (Print)	25	Extensions	17
⌘Q (Quit)	26		
⌘R (Run A Script/Stop Script)	38	F	
⌘S (Save)	22	Feature Changes (v2.5.3)	65
⌘Spacebar (Show Status Line)	32	File Menu	22
⌘V (Paste)	27	Capture	24
⌘W (Close)	22	Capture To File	25
⌘X (Cut)	27	Clear Capture Buffer	25
⌘Y (Choose Font)	28	Close	22
⌘Z (Undo)	27	Launch	26
Control Panel	21	New	22
Control Panel Devices	17	Open	22
Convert To Low ASCII	29, 43	Page Setup	25
Convert Viewdata To Text (Text Format)	30	Print	25
Copy	27	Quit	26
Copying Disks	13	Receive File	24
Creating Phonebook Entries	33	Save	22
CRs Into Spaces	30	Save As	22
Cut	27	Send File	22
		File Menu (v2.5.3)	67
		File Transfer Settings	45
		Find/Replace	30
		Finder	12
		Format Text	29, 30
		Full Duplex	41
D		G	
Data Format	40	General Changes & Bug Fixes (v2.5.3)	65
DataLink Modem	42	Getting Started	10
DC Printer	21	Guided Tour	16
Delete Key = Backspace	43		
Desk Accessories	21	H	
Dial Number	33, 36	Half Duplex	40
Double-Click (mouse)	11	Hangup	35
Drag (mouse)	11	Help	21
Duplex	40		
E		I	
Echo	41	Initialize Modem Before Dialing	34
Edit Menu	27	Initializing Disks	12
Append Selection To Editor	28	INITs	17
Choose Font	28	Installer Program	12, 14
Clear	27	Installing (v2.5.3)	63
Copy	27	Introducing Spectrum	17
Cut	27		
Find/Replace	30	K	
Format Text	29	Keyboard	10
Paste	27	Keys	10
Paste as Reply	27		
Select All	27	L	
Send Clipboard To Modem	28	Launch	26
Send Selection To Modem	28	Learn A Script	37
Text Color	29	LFs	41
Undo	27		
Edit Menu (v2.5.3)	68		
Editing Phonebook Entries	33		

Line Delay	41	Port Settings	40
Line Feeds (LFs)	41	Press (mouse)	11
Lines Into Paragraphs	23	Print	25
Load Menu File	34	Printer Port	42
Load Settings	46	ProDOS Xmodem	46
Logon Script	34		
	M	Q	
Menu File	39	Questions and Answers	56
Format	39	Quick Keys	<i>See Command Keys</i>
Menus	19	Quit	26
Edit	27		
File	22	R	
Phone	33	Receive	24
Script	37	1K Xmodem	24
Settings	40	4K Xmodem	24
Show	31	CIS B+	24
🍏 (Apple)	21	Xmodem	24
Modem Initialization	34	Ymodem Batch	24
Modem Not Responding	35	Ymodem-g	24
Modem Port	42	Zmodem	24
More Display Options	44	Recognize 🍏 Script Keys	43
Mouse	11	Reference Section	19
	N	Remove All Unnecessary Control Characters	30
NDA's	21	Remove Extra Spaces	30
New	22	Requirements	10
New Desk Accessories	17, 21	Rerun Script In Memory	38
New Phonebook Entry	33	Resume Transfers	45
	O	Run A Script	38
Online Display	31	Run Editor As Script	38
Online Display Settings	42		
Open	22	S	
Open-Apple Keys	<i>See Command Keys</i>	Save	22
	P	Save As	22
Packet Send Ahead	46	Save Settings	46
Pad Empty Lines	46	Script Menu	37
Page Setup	25	Clear Menu File	39
Paragraphs into Lines	23	Learn A Script	37
Paste	27	Load Menu File	38
Paste as Reply	27	Rerun Script In Memory	38
Permanent INITs	17	Run A Script	38
Phone Menu	33	Run Editor As Script	38
Answer Back	36	Stop Script	38
Clear Timer	36	Script Menu (v2.5.3)	70
Dial Number	33	Scrollbar	32
Hangup	35	Scrollbar Buffer	42
Send Break	35	Select All	27
Start Timer	36	Send	22
Stop Timer	36	1K Xmodem	22
Phonebook Entries	33	4K Xmodem	22
Port Buffer Size	40	CIS B+	22
		Editor Text	23
		Text File	23
		Xmodem	22
		Ymodem Batch	23
		Ymodem-g	23

Zmodem	23	Status Line	32
Send Break	35	Steps	10
Send Clipboard To Modem	28	Stop Script	38
Send LFs	41	Stop Timer	36
Send Selection To Modem	28	Super Serial Card	42
Send Text Prompt	46	System.Setup	17
Settings Menu	40		
Character Filter	44	T	
File Transfer	45	TCP/IP (v2.5.3)	72
Loading	46	TCP/IP Menu (v2.5.3)	72
More Display Options	44	Temporary INITs	17
Online Display	42	Text Color	29
Port	40	Text File	23
Saving	46	Timer	36, <i>See also Clock</i>
Status	47		
Settings Menu (v2.5.3)	70	U	
Shift Boot	17	Undo	27
Shortcuts	<i>See Command Keys</i>	Use Online Display's Editor	43
Show Menu	31		
Capture Buffer	31	W	
Chat Line	32	Word Format	30
Clipboard	32		
Editor	31	X	
Online Display	31	Xmodem	22, 24
Scrollback	32	Xon/Xoff Flow	41
Status Line	32		
Show Menu (v2.5.3)	69	Y	
Slot Number	42	Ymodem Batch	24, 51
Sounds	43	Ymodem-g	24, 51
Special Text Formatting	29		
Spectrum	17	Z	
Start Timer	36	Zmodem	24, 52
Starting Spectrum	16	🍏 (Apple) Menu	21
Startup Device	11, 16	About Spectrum	21
Status	47	Desk Accessories	21
		Help	21





Extras



Problems

Hopefully you will have none, but if you do, and they cannot be answered by reading these notes, please contact me on:

spectrumdaddy@me.com

Other information

Check for the latest version of Marinetti:

<http://www.apple2.org/marinetti/>

If you do not already know about my other software, please drop by my home pages and read more. Amongst other titles there you will find SAM2 an email client, SAFE2 an FTP client, and SNAP a Usenet news reader..

You will also find on my web site regular updates to my own programs, PDF manual versions to many of them, as well as many other files that you might find useful:

<http://www.wannop.info/speccie/>

Someone once said to me, 'Spectrum™ does everything!'

Spectrum™ © 1991-2012 Ewen Wannop