

The Desktop Manager™

Disk Manager

by ON THREE, Inc.

User's Guide

Notice

ON THREE reserves the right to make improvements in the product described in this guide at any time and without notice.

Customer Satisfaction

If you discover physical defects in the media on which a software product is distributed, **ON THREE** will replace the media at no charge to you during the 90-day period after which you purchased the product.

In addition, if **ON THREE** releases a corrective update to the software described in this guide during the 90-day period after you purchased this package, **ON THREE** will replace the applicable diskette and documentation with the revised version at no cost to you during the six months after the date of purchase. A nominal charge will apply towards product enhancements.

Limitations on Warranties and Liability

Even though **ON THREE** has tested the software described in this guide and reviewed its contents, neither **ON THREE** nor its software suppliers make any warranty or representation, either express or implied, with respect to this guide or to the software described in this guide, their quality, performance, merchantability, or fitness for any particular purpose. As a result, this software and guide are sold "as is", and you the purchaser are assuming the entire risk as to their quality and performance. In no event will **ON THREE** or its software suppliers be liable for direct, indirect, incidental, or consequential damages resulting from any defect in the software or guide, even if they have been advised of the possibility of such damages. In particular, they shall have no liability for any programs or data stored in or used with **ON THREE** products, including the costs of recovering or reproducing these programs or data. Some states do not allow the exclusion or limitation of implied warranties or liability for incidental or consequential damages, so the above limitation or exclusion may not apply to you.

Copyright

This guide and the software described in it are copyrighted by **ON THREE** or by **ON THREE**'s software suppliers, with all rights reserved. Under the copyright laws, this guide or the software may not be copied, in whole or part, without the prior written consent of **ON THREE**, except in the normal use of the software. This exception does not allow copies to be made, whether or not sold, but all of the material purchased may be sold, given or loaned to another person. Under law, copying includes translating into another language.

You may use the software on any computer owned by you but extra copies cannot be made for this purpose. A multi-use license may be purchased to allow the software to be used on more than one computer owned by the purchaser, including a shared-disk system. Contact **ON THREE** for further information.

Lawful users of this program are hereby licensed only to read the program from its medium into memory of the specified computer solely for the purpose of executing the program. Copying, duplicating, selling or otherwise distributing this product is a violation of the law.

Willful violations of the Copyright Law of the United States can result in civil damages of up to \$50,000 in addition to actual damages, plus criminal penalties of up to one year imprisonment and/or a \$10,000 fine.

Product Revisions

=====

ON THREE cannot guarantee that you will receive notice of a revision to the software described in this manual. You should periodically check with **ON THREE** or your authorized **ON THREE** dealer.

© **ON THREE** 1985, 1986
4478 Market Street, Suite 701-702
Ventura, California 93003
(805) 644-3514

The Desktop Manager, **ON THREE** and the **ON THREE** logo are registered trademarks of **ON THREE**.

The Desktop Manager Disk Manager is a trademark of **ON THREE, Inc.**

Apple, Apple /// and ProFile are registered trademarks of Apple Computer, Inc.

The Desktop Manager Disk Manager is copyrighted © (1986) by **ON THREE, Inc.**

The User's Guide was written by *Bob Consorti*.

The Desktop Manager Disk Manager was written by *Rob Turner*.

Overview

The **Desktop Manager Disk Manager** from **ON THREE, Inc.** is a module for the Desktop Manager that has most of the features of the System Utilities program. Listing Files, Formatting Disks, Copying Files and more are all available, at the touch of a button. Never again will you have to quit your program and go to the System Utilities to list files on a disk because you couldn't remember a file's name. Nor will you ever have to leave your program and lose data after finding that you don't have a formatted disk.

With the Disk Manager module, most all of the things you used the System Utilities for can now be done from within every Apple /// program. This guide will show you how to operate the Disk Manager.

The very first thing you should do is to make a copy of the Desktop Manager Disk Manager disk. Use the System Utilities program for this. After making the copy return here.

To install the Disk Manager into your Desktop Manager, simply use the System Utilities program to copy the files from the Disk Manager disk to the subdirectory on the disk where you installed the Desktop Manager. This will normally be **.PROFILE/DESKTOP**. In the instructions below, substitute your disk device name for **.PROFILE**. If you are using the Desktop Manager on an Apple /// with a single 140K external disk drive, please follow the instructions below titled **Disk Manager - 140K Drive Installation**.

Adding The Desktop Manager Disk Manager

- 1) Startup the System Utilities program. In a minute or so the Main Menu will appear.
- 2) Press **F** to go into the **File handling commands**.
- 3) Press **C** to **Copy files**.
- 4) Put the Desktop Manager Disk Manager disk into the internal disk drive.
- 5) Type in **.D1/=** and press **RETURN**.
- 6) Type in **.PROFILE/DESKTOP/=** and press **RETURN**.

In a minute or so, the Disk Manager module will be added into the Desktop Manager subdirectory. When finished, re-boot your startup disk. After re-booting, the Desktop Manager will recognize the Disk Manager module and you will be able to select and use it. If the Utilities asks if you want to delete the old

.PROFILE/DESKTOP/OPTIONE, list the files in the **DESKTOP** subdirectory and find a free **OPTIONx** that is not used. Copy the **OPTIONE** from the Disk Utilities disk to the **DESKTOP** subdirectory with the new name.

Using The Disk Manager

You can select the Disk Manager just as all other Desktop Manager modules. Press **SOLID-APPLE ESCAPE** to display the Desktop Manager Menu, then use the **UP** or **DOWN ARROW** keys to highlight the Disk Manager module. Press **RETURN** to select it, or press **ESCAPE** to return to your applications program.

Using the Disk Manager is very easy. The main screen (shown below) allows you to select the various options available. Please remember that to leave the Disk Manager, simply press **ESCAPE**. This will return you to the Desktop Manager Menu where you can select another option, or press **ESCAPE** again to return to your applications program.

STATUS U3.2X 15:01

Recording is OFF. The FILTER is ON.

Le	Disk Manager	
Th	File Commands	Device Commands
Th	List Directories	List All Devices
Pr	Copy File	Copy Volume
	Delete File	Format Disk
	Rename File	Rename Volume
	Lock/Unlock File	Verify Volume
The	d? = Help	

Use Arrow Keys to Select, Press RETURN to Run

d-b transmits a short break, d-shift-B transmits a long break.
d-d toggles the left arrow key between a cursor key and the delete key.
d-f toggles the recording filter on and off.
d-q quits terminal mode and completely exits ACCESS ///.
d-r toggles recording on and off.
d-s displays the set up menu, pressed again displays status.
d-spacebar always transmits a rubout character.

Figure 1. Disk Manager Within Access ///

In the above picture, the Disk Manager is shown running withing the Access /// program. It doesn't have to be Access ///, as with all of the other Desktop Manager Modules, the Disk Manager works within all Apple /// programs.

There are ten options on the Disk Manager menu. They are grouped under two separate headings. There are the **File Commands** and the **Device Commands**. The File Commands will operate on files while the Device Commands operate on entire devices (disks) at once.

To select any one of the options, you must first **highlight** it. To do this, simply press any one of the arrow keys. The highlight will move according to the arrow key you press. After highlighting the option you want, press **RETURN**. In a second or so the desired option will be shown on the screen.

File Commands

The five items on the File Commands section of the Disk Manager, will let you List files, Copy files, Delete files, Rename files and Lock or Unlock files from within all Apple /// programs. Sophisticated options make these sections of the Disk Manager powerful yet very easy to use.

List Directory

If you have ever been stuck in a certain part of a program and forget the pathname you are supposed to load or save, the List Directory option allows you to list the files on any disk. After selecting this option, the following screen will appear.

```

TUS  V3.2X                                15:01
List Directory
To list a directory enter the name and press RETURN or press <Space> <CR>
to list the Prefix. To Exit, Press ESCAPE or Press RETURN with the line blank.
Enter the file name -> █
d? = Help

List Directory Written by Bob Turner
d-spacebar always transmits a rubout character.
```

Figure 2. List Directory Option

As the prompt says, simply type in the directory you want to list and press **RETURN**. You may type in either a device name such as **.D1** or **.PROFILE**, or a volume name like **/PROFILE** or **/DATA.DISK.01**.

To exit back to the Disk Manager Main Menu, simply press **ESCAPE**.

When entering the directory name, the standard Desktop Manager editing commands are available. These can be found by asking for help. Simply press **OPEN-APPLE ?** and the following screen will appear.

```

TUS V3.2X 15:01
List Directory
To list a directory enter the name and press RETURN or press <Space> <CR>
to list the Prefix. To Exit, Press ESC or Press ESC with the line blank.
Enter the file name ->
d? = Help

Editing Commands
dE -> Edit Mode      dC -> Copy String
dP -> Paste String   dD -> Delete Line
d<- -> Delete Left    d- -> Delete Right
dY -> Delete To EOL  d< -> Jump Beginning
d> -> Jump End       dEsc -> Restores String
dTAB -> Tab Backward TAB -> Tab Forward

Press ESC to Exit Help or ESC with the line blank.
File Operations Written by Pat Turner
d-spacebar always transmits a rubout character.
  
```

Figure 3. Editing Help

If you press **RETURN** you will be shown the various commands that are available when listing files with this option. You can list deleted files, directories, files, files of a distinct type and files containing certain characters.

```

TUS V3.2X 15:01
List Directory
To list a directory enter the name and press RETURN or press <Space> <CR>
to list the Prefix. To Exit, Press ESC or Press ESC with the line blank.
Enter the file name ->
d? = Help

Editing Commands
Listing Commands
<Path>          = List All Files In Directory
<Path> -R       = List Removed (Deleted) Files
<Path> -D       = List Directories Only
<Path> -F       = List Files Only
<Path> "Text"    = List By File Type
<Path> /$xxx    = List All Files Containing Substring xxx

Press ESC to Exit Help or ESC with the line blank.
File Operations Written by Pat Turner
dH = Hard Copy of Current Window
  
```

Figure 4. Listing Options

You can use more than one listing commands at a time. For example, you could list all the /// E-Z Pieces Database files whose names contain the characters **IST** with the following command:

.PROFILE/THREE.EP/*IST "DATABASE"

The pathname above assumes you are listing the files in the **.PROFILE/THREE.EP** sub-directory.

If you entered **.D1** and listed the Desktop Manager Install Files disk, the following screen would appear.

TUS U3.2X 15:01

List Directory							
/DESKTOP.FILES							
File Name	Blocks	Modified	Time	File Type	Created	Time	EOF
DESKTOP.MANAGER	11	24-Apr-86	15:13	DesktopMgr	24-Apr-86	15:12	4835
OPTIONA	38	10-Apr-86	10:15	DesktopOpt	26-Mar-86	20:10	18811
OPTIONB	43	23-Apr-86	13:17	DesktopOpt	23-Apr-86	13:09	21232
OPTIONC	43	23-Apr-86	11:48	DesktopOpt	23-Apr-86	11:47	21248
OPTIOND	6	10-Apr-86	10:15	DesktopOpt	26-Mar-86	9:35	2318
OPTIONT	34	23-Apr-86	13:32	DesktopOpt	23-Apr-86	13:31	16840
NOTE.PAD	29	10-Apr-86	10:16	NotePadFile	26-Mar-86	9:35	14336
NOTE.FIND	4	10-Apr-86	10:16	SubLoadFile	27-Mar-86	15:24	1436
NOTE.HELP	7	10-Apr-86	10:16	SubLoadFile	26-Mar-86	20:11	2918
NOTE.PRINT	6	10-Apr-86	10:16	SubLoadFile	26-Mar-86	20:11	2322
Listing Completed, Press Any Key to Continue							

Figure 5. Desktop Manager Install Files Disk List

Shown directly under the List Directory tab, the volume name on this disk is **/DESKTOP.FILES**. There were ten files listed, 280 total blocks on the disk, 228 used and 52 blocks free. For each file that is listed the number of blocks that the file uses, the last time the file was modified, the file type, the time the file was created, and the number of bytes (EOF) in the file is listed.

You could list all the sub-directory files on your ProFile hard disk with the command **.PROFILE -D**. Please note the space between the device name and the dash. Likewise, you could list all of the files (no sub-directories) with the command **.PROFILE -F**.

If there are more files being listed than can be shown on one screen, you will be prompted to **Press Any Key to Continue or Escape to Exit**. If you press **ESCAPE**, you will be returned to the listing menu. Any other key will continue the listing.

The List Directory option allows you to list files on any Apple /// SOS disk. You may at times get an error message such as **Volume Not Found**. If this error occurs, you may be attempting to list an Apple // DOS - Pascal or CP/M disk.

Printing A File Listing

You can print a copy of the current window (including the listed files) by pressing **OPEN-APPLE H**. This will send the List Directory window to the default printing device. Please note that this option will only print one screen at a time to the printer. If you have more than one screen of files, you will have to print each successive screen. Complete information on the default printer can be found in chapter 7 of the Desktop Manager User's Guide.

Copy File

The Copy File option allows you to copy any file on any disk to any other disk. You can also use this command to send a copy of your file to a printer. After selecting this option, the following menu will appear. Pressing **ESCAPE** will return you to the Disk Manager Main Menu.

STATUS V3.2X

15:01

```

Recording is OFF.                               The FILTER is ON.

Le  _____ Disk Manager _____
Th  |_____ Copy File _____|
Th  |
Pr  |   Use this option to copy files.  At the first prompt, type
    |   the name of the file you wish to copy, then press RETURN.
    |   At the second prompt, type in the name of the destination
    |   file, then press RETURN.
    |
    | Source file [ .PROFILE/BIG.DAT ]
    | [ ] Destination [
The  |
d-b tr press CTRL-C to exit Written by RDS (UNDEF) 01
d-d to
d-f toggles the recording filter on and off.
d-q quits terminal mode and completely exits ACCESS ///.
d-r toggles recording on and off.
d-s displays the set up menu, pressed again displays status.

```

Figure 6. Copy File Option

As the menu says, simply type in the name of the file you want to copy, and then type in the destination. The Disk Manager will copy the file for you. The destination may be a printer device. You can't print to the console or to the grafix driver. Any printer driver will do.

The Copy File option will only copy **SOS ASCII**, **TEXT** and **DATA** files to a printer. The **ASCII** file format that is most commonly used by word processors. The **TEXT** file format is used by Pascal text files. **DATA** files are created by most programs.

The Copy File option correctly handles SDS SPARSE files, something System Utilities version 1.1 does not. System Utilities version 1.2 also handles sparse files correctly.

The Copy File option (as with all other Disk Manager options) allows you to refer to a file with a device or volume name. For example, if the file **BIG.DATA** is on the device **.PROFILE** whose volume name is **/PRO**, you could refer to the file with either:

```

.PROFILE/BIG.DATA      or      /PRO/BIG.DATA

```

Delete File

The Delete File option allows you to delete any file. After selecting this option, the following menu will appear. Pressing **ESCAPE** will return you to the Disk Manager Main Menu.

```

Recording is OFF.                                The FILTER is ON.
Le |-----|
Th |
Th |
Pr |
The |
d-b |
d-d |
d-f |
d-q |
d-r |
d-s |

Disk Manager

Delete File

Use this option to delete a file from disk. Remember that
once a file is deleted only a utility such as Lazarus ///
can recover it. At the prompt below, type in the name of
the file you want to delete and press RETURN.

File? C:\PROFILE\BIG.DAT

d? = Help
Press ESCAPE to return to Disk Manager Main Menu
Written by RUS 10-11-88

d-b toggles the recording filter on and off.
d-d quits terminal mode and completely exits ACCESS ///.
d-f toggles recording on and off.
d-r displays the set up menu, pressed again displays status.

```

Figure 7. Delete File Option

Simply type in the name of the file that you want to delete and press **RETURN**. In a moment, you will be asked if you are sure you want to delete the file. Press **RETURN** or **Y** (for yes) and the file will be deleted. If the file is locked (protected), the prompt will say so. Since the Delete File option allows you to delete a locked file, please be sure this is what you want to do. After it is deleted, only **Lazarus ///** or similar programs will restore it.

Rename File

The Rename File option allows you to rename any file. After selecting this option, the following menu will appear. Pressing **ESCAPE** will return you to the Disk Manager Main Menu.

```

Recording is OFF.                                The FILTER is ON.
Le |-----|
Th |
Th |
Pr |
The |
d-b |
d-d |
d-f |
d-q |
d-r |
d-s |

Disk Manager

Rename File

Use this option to rename a disk file. At the first prompt,
type in the name of the file you want to rename, then press
RETURN. At the second prompt, type in the new name for the
file and press RETURN.

Original C:\PROFILE\BIG.DAT
New Name

d? = Help
Press ESCAPE to return to Disk Manager Main Menu
Written by RUS 10-11-88

d-b toggles the recording filter on and off.
d-d quits terminal mode and completely exits ACCESS ///.
d-f toggles recording on and off.
d-r displays the set up menu, pressed again displays status.

```

Figure 8. Rename File Option

Simply type in the original name of the file that you want to rename and press **RETURN**. Next, type in the new name of the file and press **RETURN**.

Device Commands

The five items on the Device Commands section of the Disk Manager, will let you List all the devices in your system, Copy disks, Format disks, Rename disks and Verify disks from within all Apple /// programs. Sophisticated options make these sections of the Disk Manager powerful yet very easy to use.

List All Devices

If you have ever wondered just what devices are configured into your system, the List All Devices command will show you. Every device driver that is configured into your **SOS.DRIVER** file will be displayed.

Along with the device name, the option will display each devices Manufacturer ID, Version Number, Device Type and Sub-Type, the Slot Number (if used) and the Unit Number of the driver. If the driver is a block device (disk drive), the option will display the number of Total Blocks on the disk, the number of Free Blocks left on the disk and the Volume Name on the disk.

If there are more than one screen of devices, you will be asked to press **RETURN** for more. After doing so, the other devices will be displayed. Shown below is a sample of just what the menu can look like.

TUS U3.2X 15:24

Device Name	Man. ID	Ver. Num	Dev. Type	Sub-Type	Slot Num	Unit Num	Total Blks	Free Blks	Volume Name	Written by
D1	0001	1.1	E1	01	---	00	280	47	/BLANK.DISK	
CONSOLE	3333	1.3	01	01	---	00	---	---	---	
PROFILE	3333	1.3	D1	05	4	00	32766	5221	/P	
U2	3333	1.3	D1	05	4	01	1600	1493	/DATA	
DESKTOP	3333	1.3	D1	05	4	02	1600	503	/DESKTOP	
CALCNOTE	3333	1.3	D1	05	4	03	1600	587	/CALC.NOTE	
DISKMANAGER	3333	1.3	D1	05	4	04	1600	254	/DISK.MANAGER	
CALENDAR	3333	1.3	D1	05	4	05	1600	654	/CALENDAR.1.2	
D2	3333	1.3	D1	05	4	06	280	66	/D2	
D3	3333	1.3	D1	05	4	07	280	273	/D3	
D4	3333	1.3	D1	05	4	08	280	273	/D4	
U1	3333	1.1	F1	01	3	00	1600	1593	/UD.002	
MOUSE	3333	1.1	68	01	2	00	---	---	---	
PKASO	4953	3.2	40	01	1	00	---	---	---	
FMTD1	0001	1.3	11	01	---	00	---	---	---	

Press RETURN for more

Figure 11. List All Devices Option

Printing A Device Listing

You can print a copy of the current window (including the device list) by pressing **OPEN-APPLE H**. This will send the List All Devices window to the default printing device. Complete information on the default printer can be found in chapter 7 of the Desktop Manager User's Guide.

Pressing **ESCAPE** or **RETURN** will bring you back to the Disk Manager Main Menu.

Copy Volume

The Copy Volume option allows you to copy any disk device onto a similar sized disk. After selecting it, the following menu will appear. Pressing **ESCAPE** will return you to the Disk Manager Main Menu.

STATUS U3.2X 15:24


```

Recording is OFF.           The FILTER is ON.
Le  ┌─── Disk Manager ───┐
Th  │                     │
Th  │   Copy Volume       │
Pr  │   Use this option to copy one disk to another.  When using
    │   this option ALL the information on the destination disk
    │   will be lost.
    │   Enter Source Device Name? [ C.D2              ]
    │   Enter Destination Device? [ D01                ]
The │   ┌───┴───┐
    │   │       │
d-b  │   Press ESCAPE to EXIT.  Written to file Manager.M18
d-d  │   └───┴───┘
d-f  │   toggles the recording filter on and off.
d-q  │   quits terminal mode and completely exits ACCESS ///.
d-r  │   toggles recording on and off.
d-s  │   displays the set up menu, pressed again displays status.
    │   └───┴───┘
    │   d? = Help
    └───┴───┘
  
```

Figure 12 Copy Volume Option

Simply type in the device or volume name of the disk you want to copy and press **RETURN**. If there is a similar sized disk drive configured into your system, the destination device prompt will show a similar sized device. If the default is not where you want to copy, simply type in the new device and press **RETURN**.

If there is not a similar sized disk configured into your system, a message will appear saying that you can't make a copy. Otherwise, the Copy Volume command will ask if you want to destroy the contents of the destination disk. If you accidentally selected the Copy Volume command, press **ESCAPE** here, otherwise press **RETURN** to make the desired copy. Remember that this command copies entire disks at a time. If you just wanted to copy one or more files, use the Copy File command.

The Copy Volume option will spend a minute or so copying and then return to the Copy Volume menu. If you want to copy additional disks, continue. Otherwise, press **ESCAPE** to return to the Disk Manager Main Menu.

If the disk you are trying to copy from or onto is not an Apple /// SOS volume, the Copy Volume command will respond with the appropriate error. The Disk Manager Copy Volume will copy Apple /// volumes only.

Format Disk

The Format Disk option allows you to format any disk drive that you have configured into your system. If you have ever been stuck in an applications program and find you do not have a blank disk to save the file you have been working on, this option will save the day. After selecting it, the following menu will appear. Pressing **ESCAPE** will return you to the Disk Manager Main Menu.

STATUS V3.2X

15:24

```

Recording is OFF.                               The FILTER is ON.
Le |-----| Disk Manager |-----|
Th |-----| Format Disk |-----|
Th |-----| Use this option to format a disk. At the first prompt, type
Pr |-----| in the name of the device that contains the disk you want
The |-----| to format and press RETURN. At the second prompt, type in
    |-----| the name you want to give the disk and press RETURN.
    |-----|
    |-----| Format Which Device? [C.D1] ]
    |-----| Enter Name for Disk [BLANK.DISK] ]
    |-----|
    |-----| Press ESCAPE to Exit                               d? = Help
d-b |-----|
d-d |-----|
d-f |-----| toggles the recording filter on and off.
d-g |-----| quits terminal mode and completely exits ACCESS ///.
d-r |-----| toggles recording on and off.
d-s |-----| displays the set up menu, pressed again displays status.
    
```

Figure 13. Format Disk Option

Simply type in the device name of the disk you want to format and press **RETURN**. Next, type in the volume name you want to give the disk you are formatting and press **RETURN**. If the appropriate drivers are in your system, the disk you specified will be formatted.

If the disk you want to format is already formatted, a message asking if you want to destroy the old volume will appear. If you get this message it's a good idea to use the List Directory option to see if there is any important data on the disk you are about to format. If you really want to format the disk, press **Y** (for **YES**), or use the arrow keys to highlight the **Yes** option and press **RETURN**. In a minute or so the disk will be formatted and you can continue your work with a fresh, blank disk.

If an error occurs during the formatting, you will be notified with a small window in the middle of the screen. You may have tried formatting a disk with a write-protect tab on, or possibly the disk has a bad block (section) on it. This error will also indicate if your drive speed is too slow or too fast. In this case, you will have to get the disk drive in question serviced.

After formatting a disk, it's a good idea to use the Verify Volume option to make sure the entire disk is free of bad blocks. The Verify Volume option is explained a bit later.

Verify Volume

The Verify Volume option allows you to verify the contents of any disk drive that you have configured into your system. If you have questions about the integrity of a data disk, use this option to check and see if it's alright. After selecting it, the following menu will appear. Pressing **ESCAPE** will return you to the Disk Manager Main Menu.

STATUS U3.2X

15:24

```

Recording is OFF.                      The FILTER is ON.
Le |-----|
Th |-----|
Th |-----|
Pr |-----|
The |-----|
d-b |-----|
d-d |-----|
d-f |-----|
d-q |-----|
d-r |-----|
d-s |-----|

```

Use this option to verify that there are no bad blocks on a disk volume. The default number of blocks to scan will be the total number of blocks on the volume.

Device to Verify? [D1]]

Number of blocks to scan? [280]]

Turn on the block counter? [Yes/No]]

d? = Help

d-b toggles the recording filter on and off.

d-d toggles the recording filter on and off.

d-q quits terminal mode and completely exits ACCESS ///.

d-r toggles recording on and off.

d-s displays the set up menu, pressed again displays status.

Figure 15. Verify Volume Option

Simply type in the device or volume name of the disk you want to verify and press **RETURN**. On the next line, the number of blocks on the disk you want to verify will be displayed. Simply press **RETURN** if you want to verify the entire disk, or type in the number of blocks that you want to verify and press **RETURN**.

The Verify Volume option will now ask if you want the block counter on or off. The block counter will show you the number of each block as it is being verified. It takes a little longer to verify a disk with the block counter on, but it will show you exactly how far along in the verification the utility is.

If you want to view the block counter, simply press **RETURN**, type **Y** (for Yes) or move the highlight to **Yes** and press **RETURN**. If you do not want to display the block counter, type **N** (for No) or move the highlight to **No** and press **RETURN**.

If there are any bad blocks on the disk, they will be displayed. If there are more than 36 bad blocks, the Verify Volume option will stop with an error message indicating too many bad blocks. Otherwise, the option will show you any bad blocks on the disk during the verification process.

Disk Manager - 140K Drive Installation

The Disk Manager (as with all Desktop Manager Modules) is designed to be used with a large capacity disk drive. If you are using the Desktop Manager on a single external 140K drive system, you can still use the Disk Manager. You will however, install it in a different manner.

Use the System Utilities to copy the file **OPTIONE** from the Desktop Manager Disk Manager disk to the file **.D2/DESKTOP/OPTIONE** on your normal Desktop Manager work disk. If the Utilities asks if you want to delete the old **.D2/DESKTOP/OPTIONE**, list the files in the **DESKTOP** subdirectory and find a free **OPTIONx** that is not used. Copy the **OPTIONE** from the Disk Utilities disk to the **DESKTOP** subdirectory with the new name. Next, format a blank disk. Make a subdirectory called **DESKTOP**. Copy the entire contents of the Disk Manager disk into the subdirectory **DESKTOP** on this freshly formatted disk.

When you start-up your application programs, keep your normal Desktop Manager work disk in the second disk drive. When you want to use the Disk Manager, put the copy of the Disk Manager disk into the second disk drive and press **SOLID-APPLE ESCAPE** to display the Desktop Manager Menu, then use the **UP** or **DOWN ARROW** keys to highlight the Disk Manager module. Press **RETURN** to select it, or press **ESCAPE** to return to your applications program.

When you want to use a different Desktop Manager option, put your regular Desktop Manager disk back into the second disk drive.

The above instructions assume that you have installed the Desktop Manager on drive 2 (**.D2**). If you have installed it on a different floppy device, substitute its device name for **.D2** in the instructions just above.

Disk Manager Technical Notes

The Disk Manager program is divided into 11 sections. The main section is **OPTIONE** (see note below) in the **DESKTOP** subdirectory. This is the main Desktop Manager Module and it controls running the other 10 sections. Each of the other sections: **LIST.DIRECTORY**, **LIST.DEVICES**, **COPY.FILE**, **COPY.VOLUME**, **DELETE.FILE**, **FORMAT.DISK**, **RENAME.FILE**, **RENAME.VOLUME**, **LOCK.UNLOCK** and **VERIFY.VOLUME** are located in the **DISK.MANAGER** subdirectory in the **DESKTOP** subdirectory.

As the file names imply, each one is a separate section. If you ever accidentally delete one or more of the files in the **DISK.MANAGER** subdirectory, you will get an error message indicating the Disk Manager can't use one of the sections. In this case, simply copy the missing file into the **DISK.MANAGER** subdirectory.

If you have a better file copying or listing routine (or any other Disk Manager module) you can replace the **COPY.FILE** or **LIST.DIRECTORY**, etc. files on disk with your own. Your programs should be **ORGed** to start at **\$4600**. The first instruction should be a **JMP** to the beginning of your code. The main Disk Manager section controls loading the various sections in. When you exit your section, return control to the main Disk Manager with a simple **LDA #00 - RTS**.

If you wish to write your own Desktop Manager Module, please call or write **ON THREE, Inc.** for the **Desktop Manager Programmers Toolkit**. It provides the code to pop-up multiple folders on the screen and the line input routine. The exact same code is used in our modules, they make programming a world easier.

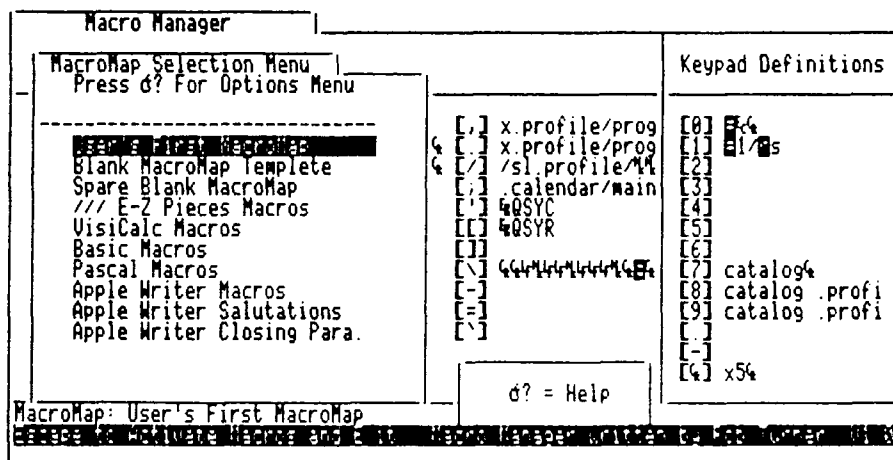
OPTIONx Names in the Desktop Manager

The standard name for the Disk Manager option of the Desktop Manager is **OPTIONE**. If you have installed other modules into your Desktop Manager, it is possible that you may already have one named **OPTIONE**. If this is the case, you can name the Disk Manager option any free **OPTIONx**, where **x** is **A - I**.

As with most Desktop Manager options, the Disk Manager can have any name.

Other Desktop Manager Modules Available Now Or Coming Soon:

Macro Manager - Allows you to define a single keypress to be a series of keys. The Macro Manager will play them back on your command. Features a record macro mode that can record a series of keystrokes (up to some 2,000) - while you are typing them into your program, and later assign them to a single keypress. Up to 50 different keys can contain macro assignments. These sets of macros are called MacroMaps™ and over 200 different MacroMaps that you can add to delete from, etc. can be selected from an easy to use menu. The Macro Manager module allows you to copy macros from one key to another and exchange macros between keys. All this and more for only **\$44.95**.



Macro Manager

Ascii Chart - Lists in a an easy to understand form, the decimal and hexadecimal values for all the ASCII characters. Features a keypress table that shows you just what keys to press to get a certain ASCII code. The keypress table is useful in sending commands to a printer to go to bold, italic, compressed print, etc. Only \$9.95 - Includes source code!

Mr. SandMan - A full-color arcade game (just like PacMan™) that you can play at any time. Eat up those nasty JOBS's in this challenging and amusing game. Only \$29.95. Includes the Desktop Manager and stand-alone version.

Grafix Manager - Allows you to send graphics images to your printer from within any program. You can combine text and graphics images on the same piece of paper. In the middle of your word processing document you can insert a picture. Features automatic rotation, and enlarging and/or shrinking of images. Medical image processing techniques allow scaling changes without loss of clarity in the image. Supports Apple DMP-ImageWriter, Epson, IDS, OkiData, Pkaso, Pkaso/U & more. Available July 1, 1986.

A New ON THREE Service!

To order a new **Desktop Manager Module** or any other **ON THREE** product, use our **TOLL FREE Order Line** - (800) 443-8877. In California call (805) 644-3514. We must restrict this line to orders only. It has been established to offer a new convenience and a faster turnaround for our customers.

Calls for technical support and all other matters should be directed to (805) 644-3514. Thanks for your understanding and cooperation.

If you have problems with our products or anyone elses, please do write the question in the form of a letter to the editor. In this way, ourselves or other Apple /// users may be able to help you - And everyone who reads ON THREE Magazine can see in print the answers to potential problems.

Please call or write with what you want your Apple /// to do. Do you want a sideways printing module that will take your large spreadsheet and print it sideways down the paper? Would you like a printer controller module that sets up your printer for underlining, bold, italic, etc.?

If you tell us what you would like, we just may be able to do it for you!