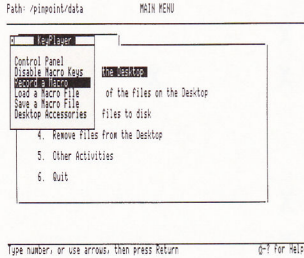


KeyPlayer™



DESCRIPTION

KeyPlayer is a "pop-up" macro key program that replaces complex, repetitive command sequences with single keystrokes. KeyPlayer installs as a Pinpoint Desktop accessory and is the **ONLY** macro program that works with AppleWorks and Pinpoint Desktop Accessories at the same time.

USES

KeyPlayer greatly reduces non productive computer time by combining multiple keystrokes into one single keystroke. An example of a macro might be loading several word processing documents onto the AppleWorks desktop and printing them - all in one keystroke. Another one would be to GOTO the main menu from anywhere in the program; again, only one keystroke.

Or KeyPlayer automatically formats letters complete with date, margins, printer setup, and your name at the bottom. With screen highlighting, pop-up menus and conditional branching KeyPlayer creates turn-key AppleWorks courseware or interactive, self-running demonstrations.

SUGGESTED RETAIL PRICE
\$49.00

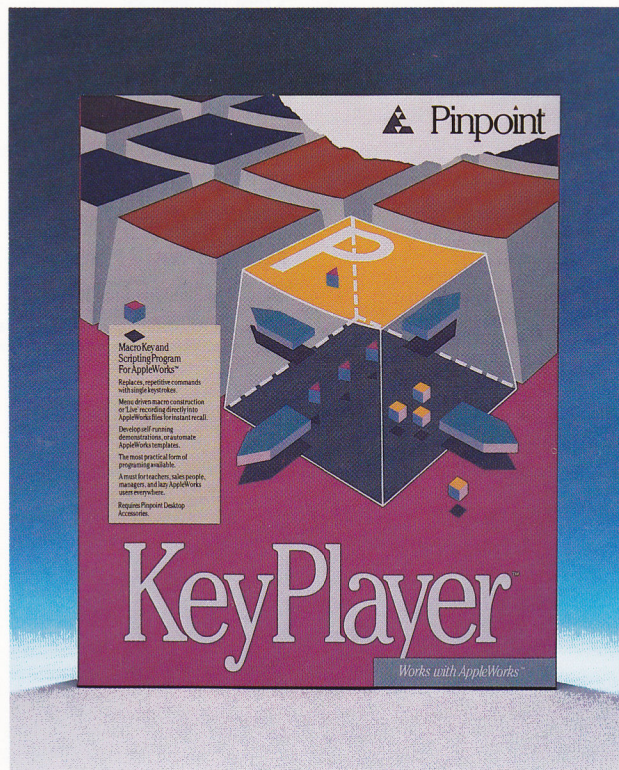
SYSTEM REQUIREMENTS

Requires 128K; Apple IIc, Enhanced IIe, IIGS, or 100% compatibles, or Apple IIe with Pinpoint's IIe Upgrade Kit.

- **ONLY pop-up macro key program that works with AppleWorks and Pinpoint Desktop Accessories.**
- **Replace up to 3000 keystrokes with just 1, automating any AppleWorks function.**
- **Menu-driven or 'live' macro construction.**
- **Macros stored in an AppleWorks WP file for quick review and easy editing.**

Apple II Forever.
Apple IIc, Enhanced IIe
and hot new Apple IIGS.

Power Tools

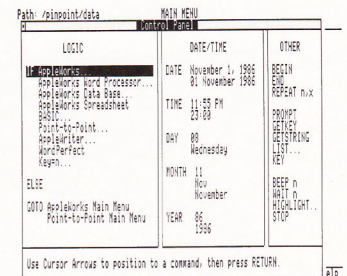


SOFTWARE REQUIREMENTS

Pinpoint Desktop Accessories, and AppleWorks (1.3 or later recommended) are required.

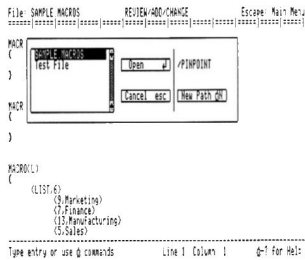
FEATURES/PERFORMANCE

- Replaces complex, repetitive command sequences with one simple keystroke.
- Menu-driven and/or "live" macro construction of up to 3000 keystrokes per single macro. Or records up to 70 macros.
- Macros are stored as AppleWorks files for quick review and easy editing.
- Allows up to 16 nested levels of macro addressing; recursive macros supported.
- Fully programmable with IF... THEN...ELSE capabilities for conditional branching.
- Features advanced error trapping that prevents you from accidentally calling up the wrong macro inside the wrong program.
- Assign one macro key to perform the same function inside different applications so every application can have the same SAVE THEN PRINT or DELETE WORD function.



- "Pops-up" with Pinpoint's other desktop accessories so you never have to leave AppleWorks.

- Open-architecture design delivers unmatched compatibility with Pinpoint and AppleWorks.
- Features pull-down menu window for selecting functions such as Boolean operations, GOTO functions and conditional branching.
- Keyboard macros are stored as AppleWorks files for convenient writing and editing.



- Uses a list function to automatically insert frequently used terms and a string function for keyboard input.
- Keyboard macros are stored as AppleWorks files for convenient writing and editing.

PERFORMANCE BOOSTING HARDWARE OPTIONS

Any standard ProDOS storage device, including UniDisk 3.5, Apple 3.5 Drive, RAM Expansion Card and/or Hard Disk Drive.

PERFORMANCE BOOSTING SOFTWARE OPTIONS

"Pop-up" software (installed as a Pinpoint Desktop accessory):

- Pinpoint Toolkit *add-on desktop accessories*

Stand-alone software:

- Pinpoint RunRun *ProDOS disk manager*
- Pinpoint RAM Enhancement Kit *RAM partitioning software*

POINT BY POINT COMPARISON CHART

	KeyPlayer	MacroWorks	AutoWorks
Pinpoint Desktop Accessories compatibility	X		
Supports macros for AppleWorks	X	X	X
Comprehensive support for courseware development, interactive demonstrations and turn-key application development	X		
Menu driven macro recording	X		
'Live' macro recording	X		X
Access all functions while recording	X		
Number of 'live' macros recorded	70	0	7
Number of keystrokes per macro	3,000+	216	5,000+
Total number of keystrokes per macro file	3,000+	216	5,000+
Multiple macro files supported	X	X	X
Desktop macro file library manager independent of AppleWorks	X		
Stores macros in AppleWorks files	X	X	X
Indented text with heirarchical macro structure automatically created for quick review and easy editing	X		
Time, day and date functions automatically inserted into application	X		
Real-time clock support	X		
Screen highlighting	X		
User defined screen prompts	X		
Pop-up menus and list functions	X		
'IF' conditional logic in macros	X	X	X
'IF...ELSE' conditional logic in macros	X		
'GET KEY' function	X	X	X
'GET STRING' function	X		X
'BEEP' and 'WAIT' functions	X		
'GOTO MAIN MENU' function	X		X

NOTE: Because Pinpoint Publishing is continuously looking for ways to improve and enhance its software the above specifications are subject to change without notice. Contact Pinpoint Publishing with your questions and suggestions.

KeyPlayer™