

# TypeSet™

## Font

Avant Garde

Berling Agency

Bookman

*Carolina Brush*

Courier

Diamond

*Dianna Script*

Formula One

Franklin Gothic

Goudy

*Mistral Graff*

Planet



Tools to  
help you  
work  
smarter  
with fonts





# TypeSet

## User's Manual

Tools to help you  
work smarter with fonts

By Steve Disbrow

and Joe Wankerl

### **WestCode Software, Inc.**

15050 Avenue of Science, Suite 112  
San Diego, California 92128  
(619) 487-9200 • (619) 487-9255 Fax  
(619) 487-9233 Technical Support



## CREDITS

### SOFTWARE DEVELOPMENT

Steve Disbrow and Joe Wankerl

### SOFTWARE DESIGN

WestCode Software, Inc.

### PACKAGE AND COVER DESIGN

Rob Renstrom

### USER'S MANUAL

Tony Gentile, Rob Renstrom and

Steve Disbrow

### PROJECT MANAGER

Tony Gentile

## SPECIAL THANKS

Sarah A., Alan Bird, Kim Brennan, Tabitha Burton, Brent Dennison, Noreen Disbrow, Ira Garvin, Jimi H., Anita N. Hill, Dianna H., Scott Jelsma, Jeff Jungblut, Traci L., Alissa M., John O., Andrew Polk, Rob R., Chris Vavruska.

## TRADEMARKS

Apple, Apple IIGs, GS/OS, TrueType, and Finder are trademarks and registered trademarks of Apple Computer, Inc.

AppleWorks GS is a registered trademark of Claris Corporation.

TypeSet, Pointless, TypeWest and the WestCode Software logo are trademarks of WestCode Software, Inc.

All other brand and product names are trademarks of their respective companies.

## COPYRIGHT

© 1993 WestCode Software, Inc.

This program contains materials from the ORCA/C Run-Time Libraries, Copyright 1987-1989 by Byte Works, Inc. Used with permission.

RESMAKER Copyright © 1990-1993 Vitesse, Inc.

All rights reserved. This manual and the software described in it are copyrighted, with all rights reserved. Under the copyright laws, this manual or the software may not be copied, in whole or part, without written consent of WestCode Software, except in the normal use of the software or to make a backup copy of the software. This exception does not allow copies to be made for others. Under the law, copying includes translation into another language or format.

0987654321

Printed in the United States of America.

# Contents

<b>1</b>	<b>Introduction .....</b>	<b>1</b>
	Welcome to TypeSet .....	1
	What TypeSet Can Do For You .....	1
	WYSIWYG: Making the Font Menu Informative .....	2
	Sets: Managing the Font Menu .....	2
	Reports: Documenting Your TrueType Font Collection .....	3
	About this Manual .....	3
	Do You Know the Basics? .....	3
	System Requirements .....	4
	Registration .....	4
	Copy Protection .....	4
	Customer Support .....	5
<b>2</b>	<b>Installing TypeSet .....</b>	<b>7</b>
	The TypeSet Disk .....	7
	Installing TypeSet .....	8
	Making Room on the System Disk .....	8
	Using the Installer Program .....	10
	Activating TypeSet .....	12
<b>3</b>	<b>Font Sets .....</b>	<b>13</b>
	Exploring TypeSet .....	13
	The Set Selector Menu .....	14
	The Font List .....	14
	New set (Command-N) .....	14
	Remove set (Command-R) .....	15
	Add (Command-A) .....	15
	Selecting Fonts .....	16
	Delete (Command-D) .....	16
	Reports... (Return) .....	17

Settings... (Command-S) .....	17
Display Set Change Message (Command-D) .....	17
Use WYSIWYG Font Menu (Command-U) .....	17
Key Equivalent .....	18
TypeSet In Action .....	18
Example 1 – Creating a New Set .....	19
Example 2 – Modifying a Duplicate Set .....	21
Making the Most of Sets .....	22

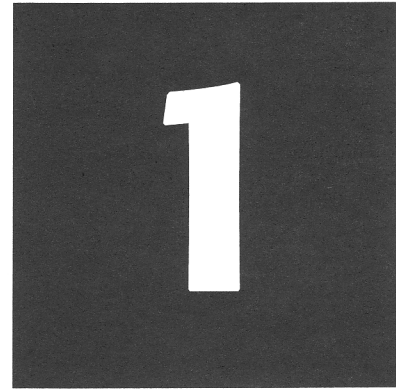
## **4 Reports ..... 23**

The Value of Font Reports .....	23
Generating Reports .....	23
The Font List .....	24
Reports Options .....	24
Report Preferences (Command-P) .....	26
Choose Font to Use For Headings (Command-Y) .....	26
Specify Page Setup (Command-S) .....	27
Sample Text .....	27
Example 1 – Several Fonts, Several Reports .....	28
Example 2 – Line Samples .....	29
Example 3 – Print Them Out! .....	30
Information On Font (Control-I) .....	31
An Informative Example .....	31

## **A Trouble-shooting ..... 33**

Questions and Answers .....	33
Disabling TypeSet at Startup .....	35

# Introduction



## Welcome to TypeSet

With the popularity of WestCode Software's Pointless™ program, TrueType fonts have become a hot item in the Apple IIGS world. It's not uncommon for some IIGS owners to have dozens, or even hundreds of these fonts installed in their systems!

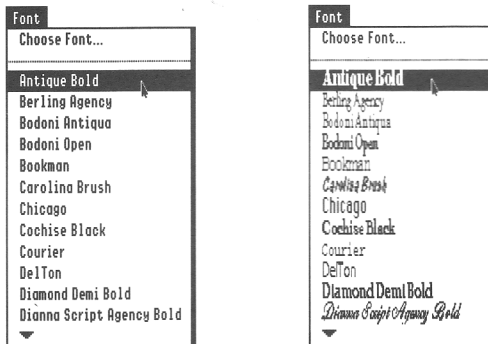
TypeSet™ is a high-powered, three-part productivity package which will allow you to take control of your TrueType fonts. As a New Desk Accessory (NDA), TypeSet automatically loads when your system starts up. Once installed, it operates behind the scenes, so you'll continue to work with your IIGS programs as you always have.

## What TypeSet Can Do For You

- Create a *WYSIWYG Font menu*, enabling your IIGS desktop applications to display the name of each TrueType font in its own typeface inside the Font menu.
- Build *font sets*, allowing you to control which TrueType fonts appear in the Font menu.
- Generate *reports*, allowing you to see what a particular font will look like on paper, including symbols and international characters.

## WYSIWYG: Making the Font Menu Informative

The first and most dramatic feature of TypeSet is its ability to turn a plain, uninformative Font menu into one which displays each font name in its own typeface, allowing you to pick the font you need at a glance.



With the What-You-See-Is-What-You-Get (WYSIWYG) Font menu feature of TypeSet, you'll never have to try to remember what a font looks like again!

## Sets: Managing the Font Menu



TypeSet also allows you to create custom sets of fonts that make the Font menu easier to navigate. For example, if you were working on a project which only required three fonts, it would be far easier to select a font from a Font menu that looked like the one to the left.

You can create as many different sets as you need, and each set can contain any number of fonts. Best of all, whenever you switch sets, TypeSet will dynamically change the Font menu so only the TrueType fonts in the active set are shown! And, if you need to get at a font that isn't in the active set, but you don't want to switch sets, all of your fonts will still be available from the application's Choose Font menu item.



## Reports: Documenting Your TrueType Font Collection

TypeSet also provides the ability to generate reports that allow you to see your TrueType fonts in a variety of formats. The four customizable layouts are:

- **All Characters:** this report shows all of the characters in a font.
- **Key Equivalents:** this report shows the keys which you would need to press to type each of the characters in a font.
- **Line Samples:** this report shows up to ten different fonts on the same page. It also includes the disk location of the font, so that you can create a catalog of your fonts.
- **Various Sizes:** this report shows the font of your choice at sizes ranging from 8 pt. to 48 pt.

The reports generated by TypeSet can be sent to either the printer or the screen.

## About this Manual

This manual is a complete guide to understanding and using TypeSet. Reading it from cover to cover will provide you with all of the information you need to make the most of TypeSet.

We strongly suggest that you read this manual before using TypeSet. However, if you are anxious to get started, please read the instructions in Chapter 2, "Installing TypeSet".

## Do You Know the Basics?

This manual assumes that you are comfortable working with your computer and know how to select menu items, open files, click on buttons and so forth. If terms such as *double-click*, *icons* and *System Software* are new to you, please refer to the manuals that came with your computer.

## System Requirements

TypeSet requires:

- An Apple IIGS with a minimum of 1.25 megabytes (1280K) of RAM
- Apple IIGS System Software 5.0.4 or later (including System 6.0)
- Pointless 2.0 or later

Optional equipment:

- If you are working with System 6 or lots of TrueType fonts, we strongly recommend that you have a hard drive and additional RAM.
- An accelerator card will enhance the performance of TypeSet, Pointless and all of your other IIGS software.

## Registration

Please take a moment now to complete the Registration Card included with this package. Registration will allow us to notify you of product improvements and to tell you about new products. It only takes a few minutes to fill out and mail the card, so please do it now.

Remember, product support is available only to registered users.

## Copy Protection

Like all WestCode Software products, TypeSet is not copy-protected. We do this for two reasons. The first reason is that copy-protection is cumbersome and troublesome – something we try to eliminate for our valued customers. The second reason is that we believe our customers are honest people. Please help us to keep our faith in you by not making copies of this software for others. They should purchase it, just as you did.