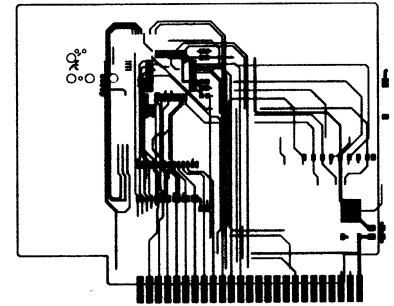


# Apple ][ SD

## SD card based storage solution for the Apple II series

- Compatible with Apple IIe (enhanced) and Apple II GS (ROM1/ROM3)
- Support for Apple II, II+ and IIe available soon
- Up to 128 MB storage in four 32 MB ProDOS partitions
- Support for additional large HFS partition available soon
- ProDOS and Smartport firmware in ROM
- Firmware ROM updatable through software



## Quickstart

1. Download CiderPress from [a2ciderpress.com](http://a2ciderpress.com) and a bootable system image from either [www.whatisthe2gs.apple2.org.za](http://www.whatisthe2gs.apple2.org.za) or [www.github.com/freitz/Applesd](http://www.github.com/freitz/Applesd)
2. If you want to make use of the full 128 MB storage capacity, the SD card has to be at least 256 MB in size, due to the way CiderPress formats the card.
3. Insert the SD card into the PC. Ignore the message that the card is not properly formatted for Windows, if it pops up.
4. Open CiderPress and select "Tools/Volume copier (open volume)". Select the physical disk that matches the size of the SD card. Alternatively choose the appropriate drive letter. However, TRIPLE CHECK for the correct disk!
5. Select "ProDOS block ordering" and "CFFA (4 or 6 Partitions)".
6. Use the "Load from file" button to copy at least one image to the SD card.
7. Quit CiderPress and safely eject the SD card from the PC. Insert the SD card into the Apple ][ SD.
8. Apple IIe: If you want the Apple ][ SD to auto-boot, insert the card into a slot higher than any other drive controller, preferably slot 7.  
Apple II GS: Insert the card into any slot and set it to "Your card" in the control panel. Remember that you will lose the functionality that is assigned to this slot internally. A suitable setup for using the Apple ][ SD with GS/OS on a ROM1 machine is to put the card in slot 1 or 2. You won't be able to use the serial port assigned to this slot normally, but it may be used for an AppleTalk connection. Set "Startup Slot" as you like.

## Image for first start is available at:

<https://github.com/freitz85/Applesd/blob/master/ProFile.zip>  
<https://github.com/freitz85/Applesd/tree/master/Software>

## Flashing EEPROM on Apple IISD:

Switch off the Apple and set jumper SV1 to 2-3 to set it to flashing mode.  
After booting the system from floppy drive (flasher disc in ../Software)

- 1.) Type '-flasher' [enter]
- 2.) Number of slot required where Apple IISD Card is plugged in
- 3.) Flashroutine will start in 2 steps (0...100%)
- 4.) Switch off Apple und set jumper to 1-2 (important)